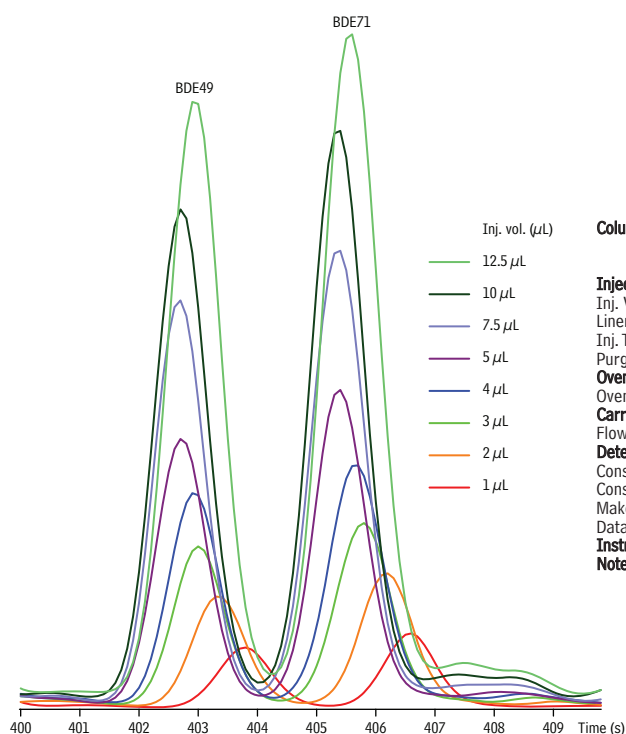


## Increasing Injection Volume While Maintaining Resolution of BDE 49 and 71 on Rtx®-1614



**Critical pair resolution is maintained  
whether injecting 1 µL or 12.5 µL.**

<b>Inj. vol. (µL)</b>	<b>Column</b>	Rtx®-1614, 15 m, 0.25 mm ID, 0.10 µm (cat.# 10296) using IP Deactivated Guard Column 5 m, 0.53 mm ID (cat.# 10045) with Universal Press-Tight® Connectors (cat.# 20400)
<b>Injection</b>	<b>Oven</b>	100 °C (hold 1 min.) to 140 °C at 40 °C/min. to 320 °C at 20 °C/min. (hold 4 min.)
Inj. Vol.:	<b>Carrier Gas</b>	He, constant flow
Liner:	Flow Rate:	2 mL/min.
Inj. Temp.:	<b>Detector</b>	µ-ECD @ 330 °C
Purge Flow:	Constant Column +	
	Constant Make-up:	50 mL/min.
	Make-up Gas Type:	N <sub>2</sub>
	Data Rate:	10 Hz
	<b>Instrument</b>	Agilent 6890
	<b>Notes</b>	Carrier gas: corrected constant flow via pressure ramps.

GC\_EV1207

Restek Corporation 110 Benner Circle Bellefonte, PA 16823  
814-353-1300 • 800-356-1688 • Fax: 814-353-1309 • www.restek.com