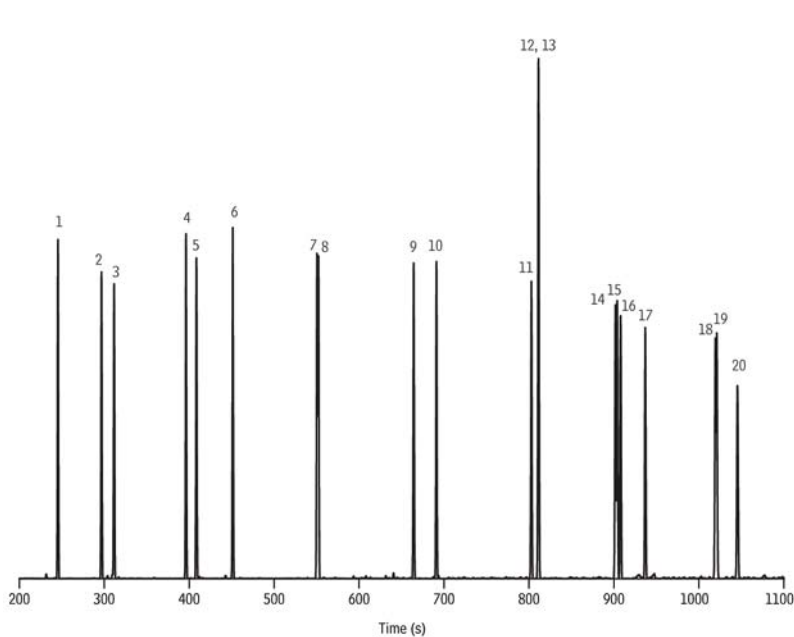


Polycyclic Aromatic Hydrocarbons on Rxi®-17 (15m x 0.25mm x 0.25µm)



GC_EV1181

Peaks

1. Naphthalene
2. 2-Methylnaphthalene
3. 1-Methylnaphthalene
4. Acenaphthylene
5. Acenaphthene
6. Fluorene
7. Phenanthrene
8. Anthracene
9. Fluoranthene
10. Pyrene
11. Benzo(a)anthracene
12. Chrysene
13. Triphenylene
14. Benzo(b)fluoranthene
15. Benzo(k)fluoranthene
16. Benzo(j)fluoranthene
17. Benzo(a)pyrene
18. Indeno(1,2,3-cd)pyrene
19. Dibenz(a,h)anthracene
20. Benzo(ghi)perylene

Column Sample

Rxi®-17, 15 m, 0.25 mm ID, 0.25 µm (cat.# 13520)

Diluent:

Methylene chloride

Conc.:

20 ng/µL

Injection

Inj. Vol.:

1 µL split (split ratio 20:1)

Liner:

4mm Split Precision® Liner w/Wool (cat.# 21022)

Inj. Temp.:

275 °C

Split Vent

Flow Rate:

42 mL/min.

Oven

Oven Temp:

80 °C (hold 1 min.) to 320 °C at 15 °C/min. (hold 2 min.)

Carrier Gas

Flow Rate:

H₂, constant flow
2 mL/min.

Detector

Constant Column +

FID @ 340 °C

Constant Make-up:

50 mL/min.

Make-up

Gas Type:

N₂

Data Rate:

20 Hz

Instrument

Agilent/HP6890 GC