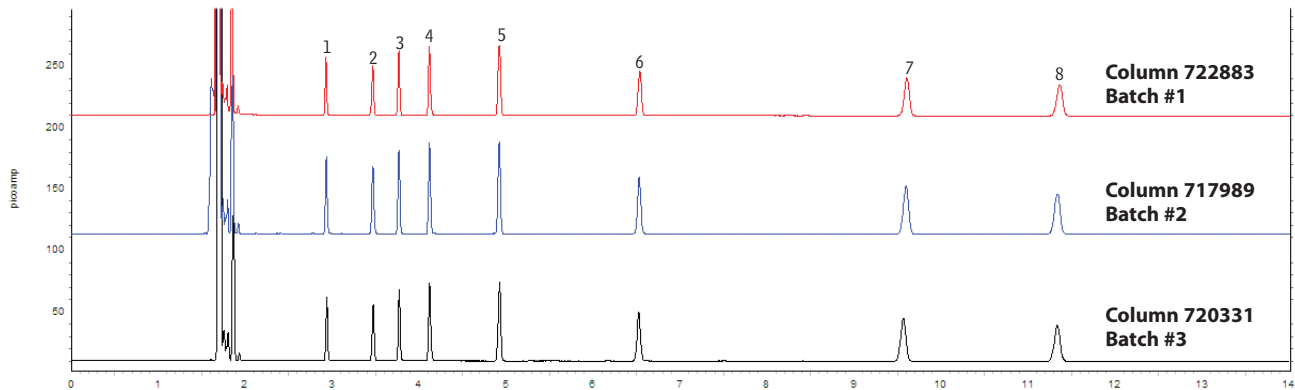


Isothermal Test Mix Rxi®-5ms



GC_EV00819

Column: Rxi®-5ms, 30m, 0.25mm ID, 0.25 μ m (cat.# 13423)
Sample: 500 μ g/mL Isothermal Column Test Mix in toluene
Inj.: 1.0 μ L, split injection (split ratio 1:100), 4mm single gooseneck inlet liner with wool (cat.# 22405)
Inj. temp.: 250°C
Carrier gas: hydrogen, constant flow
Linear velocity: 38cm/sec. @ 135°C
Oven temp.: 135°C
Det.: FID @ 330°C

1. 1,6-hexanediol
2. 4-chlorophenol
3. methyl nonanoate
4. 1-decylamine
5. tridecane
6. 1-undecanol
7. acenaphthylene
8. pentadecane