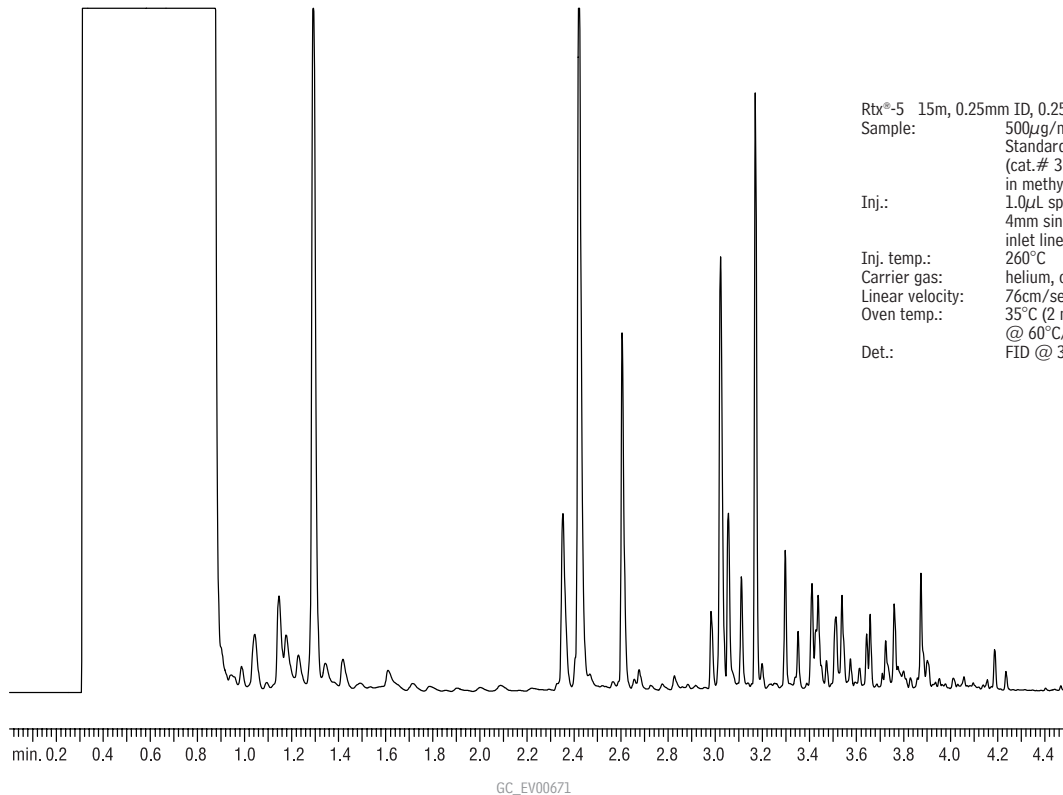


# Unleaded Gasoline Rtx<sup>®</sup>-5



Rtx<sup>®</sup>-5 15m, 0.25mm ID, 0.25 $\mu$ m (cat.# 10220)  
Sample: 500 $\mu$ g/mL Unleaded Gasoline  
Standard (unweathered)  
(cat.# 30096)  
in methylene chloride  
Inj.: 1.0 $\mu$ L splitless (hold 0.5 min.),  
4mm single gooseneck  
inlet liner (cat.# 20904)  
Inj. temp.: 260 $^{\circ}$ C  
Carrier gas: helium, constant pressure  
Linear velocity: 76cm/sec. @ 50 $^{\circ}$ C  
Oven temp.: 35 $^{\circ}$ C (2 min.) to 330 $^{\circ}$ C  
@ 60 $^{\circ}$ C/min. using GC Racer  
Det.: FID @ 330 $^{\circ}$ C