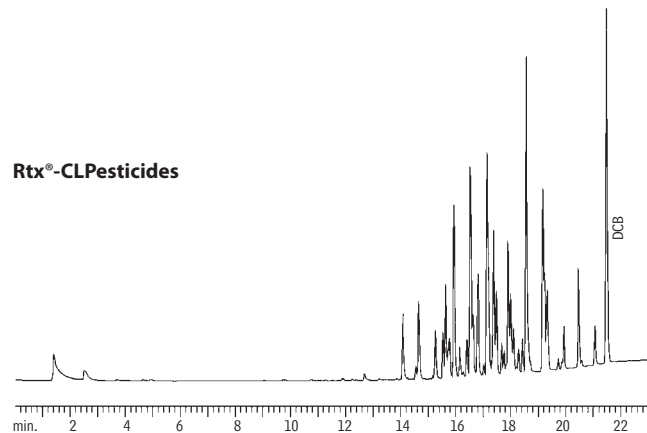


# PCBs: Aroclor® 1260

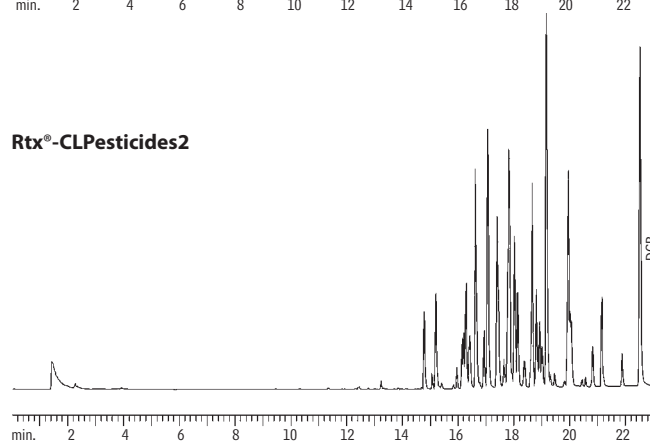
## Rtx®-CLPesticides & Rtx®-CLPesticides2

30m, 0.32mm ID, 0.50 $\mu$ m Rtx®-CLPesticides (cat.# 11139).  
0.32mm ID, 0.25 $\mu$ m Rtx®-CLPesticides2 (cat.# 11324).  
0.5 $\mu$ L direct injection, 160pg on-column concentration.  
Oven temp.: 120°C (hold 1 min.) to 300°C @ 9°C/min. (hold 10 min.)  
Inj. temp.: 210°C  
Det.: ECD with anode purge, 310°C  
Carrier gas: helium

Rtx®-CLPesticides



Rtx®-CLPesticides2



GC\_EV00456