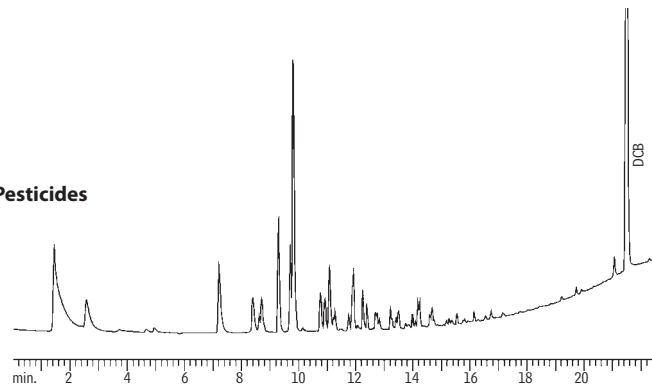


PCBs: Aroclor® 1221
Rtx®-CLPesticides & Rtx®CLPesticides2

30m, 0.32mm ID, 0.50 μ m Rtx®-CLPesticides (cat.# 11139).
30m, 0.32mm ID, 0.25 μ m Rtx®-CLPesticides2 (cat.# 11324).
0.5 μ L direct injection, 160pg on-column concentration.
Oven temp.: 120°C (hold 1 min.) to 300°C @ 9°C/min. (hold 10 min.)
Inj. temp.: 210°C
Det.: ECD with anode purge, 310°C
Carrier gas: helium

Rtx®-CLPesticides



Rtx®-CLPesticides2

