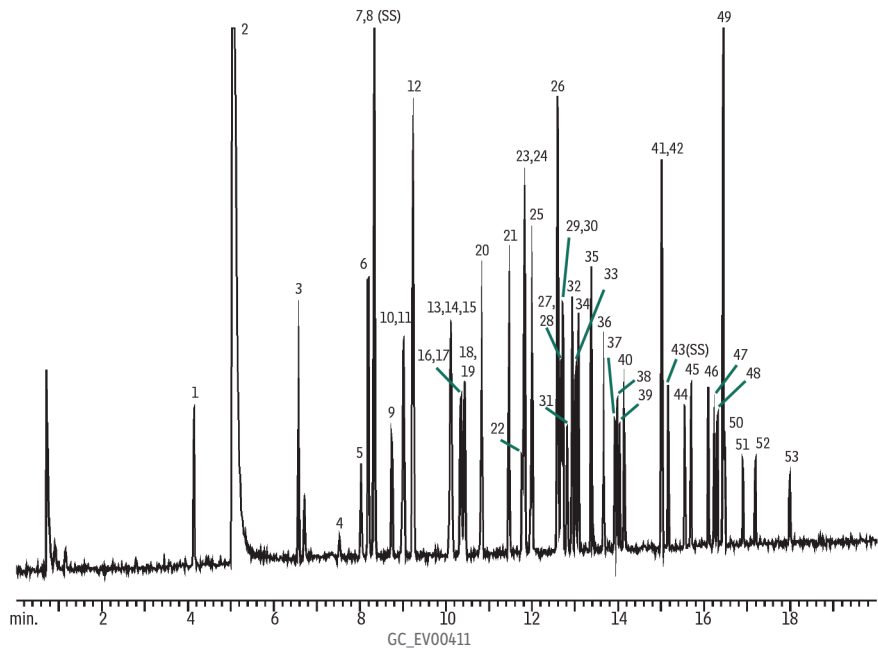


# Organophosphorus Pesticides US EPA Method 8140/8141/8141A on Rtx®-1701



Peaks	
1. Dichlorvos	27. Aspon
2. Hexamethylphosphoramide	28. Chlorpyrifos
3. Mevinphos	29. Trichloronate
4. Trichlorfon	30. Methyl parathion
5. Demeton-o	31. Phosphamidon
6. Thionazin	32. Fenthion
7. Ethoprop	33. Malathion
8. Tributyl phosphate (SS)	34. Fenitrothion
9. TEPP	35. Parathion-ethyl
10. Naled	36. Chlorfenvinphos
11. Phorate	37. Prothiofos
12. Sulfotepp	38. merphos oxone
13. Terbufos	39. Crotoxyphos
14. Demeton-S	40. Stirofos
15. Diazinon	41. Ethion
16. Fonophos	42. Sulprofos
17. Dicrotophos	43. Carbophenothion
18. Dioxathion	44. Fensulfthion
19. Disulfoton	45. Triphenyl phosphate (SS)
20. Dichlorofenthion	46. Famphur
21. Monocrotophos	47. Leptophos
22. Chlorpyrifos methyl	48. EPN
23. Dimethoate	49. Tri-o-cresyl phosphate
24. Phosphamidon isomer	50. Phosmet
25. Ronnel	51. Azinphos-methyl
26. Merphos	52. Azinphos-ethyl
	53. Coumaphos

**Column** Rtx®-1701, 30 m, 0.32 mm ID, 0.25 µm (cat.# 12024)  
**Sample** Triphenylphosphate (cat.# 32281)  
 Tributylphosphate (cat.# 32280)  
 8140/8141 OP Pesticide Calibration Mix A (cat.# 32277)  
 8141 OP Pesticide Calibration Mix B (cat.# 32278)  
 200 ng/mL

**Conc.:**  
**Injection**  
 Inj. Vol.: 1.0 µL splitless (hold 1.0 min)  
 Inj. Temp.: 250 °C  
**Oven**  
 Oven Temp.: 100 °C to 180 °C at 10 °C/min (hold 2 min) to 300 °C  
 at 18 °C/min (hold 3 min)  
**Detector** FPD @ 280 °C