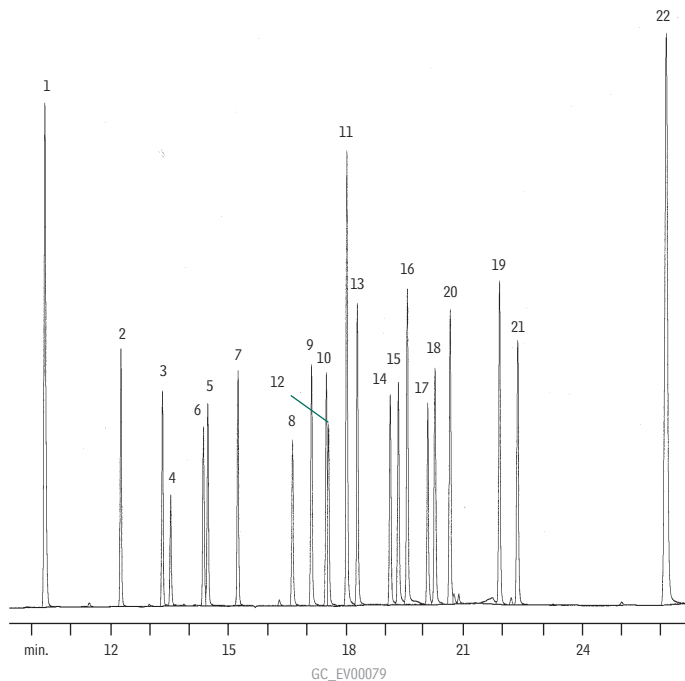


**Organochlorine Pesticides**  
**US EPA Method 8081**  
**Rtx®-35**



1. 2,4,5,6-tetrachloro-*m*-xylene (surrogate)
2.  $\alpha$ -BHC
3.  $\gamma$ -BHC (lindane)
4.  $\beta$ -BHC
5.  $\delta$ -BHC
6. heptachlor
7. aldrin
8. heptachlor epoxide
9.  $\gamma$ -chlordane
10.  $\alpha$ -chlordane
11. 4,4'-DDE
12. endosulfan I
13. dieldrin
14. endrin
15. 4,4'-DDD
16. endosulfan II
17. 4,4'-DDT
18. endrin aldehyde
19. methoxychlor
20. endosulfan sulfate
21. endrin ketone
22. decachlorobiphenyl (surrogate)

30m, 0.32mm ID, 0.50 $\mu$ m Rtx®-35 (cat.# 10439)  
Oven temp.: 120°C (hold 1 min.) to 285°C  
@ 8.5°C/min. (hold 6 min.).  
Inj.: direct, Uniliner® inlet liner  
(cat.# 20335), 200°C.  
Det.: ECD, 300°C with anode purge  
Flow rate: helium @ 2.1mL/min. set @ 120°C