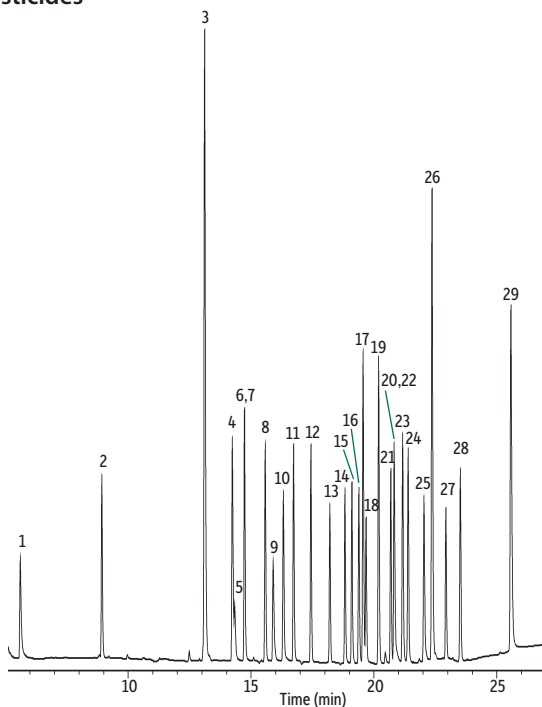


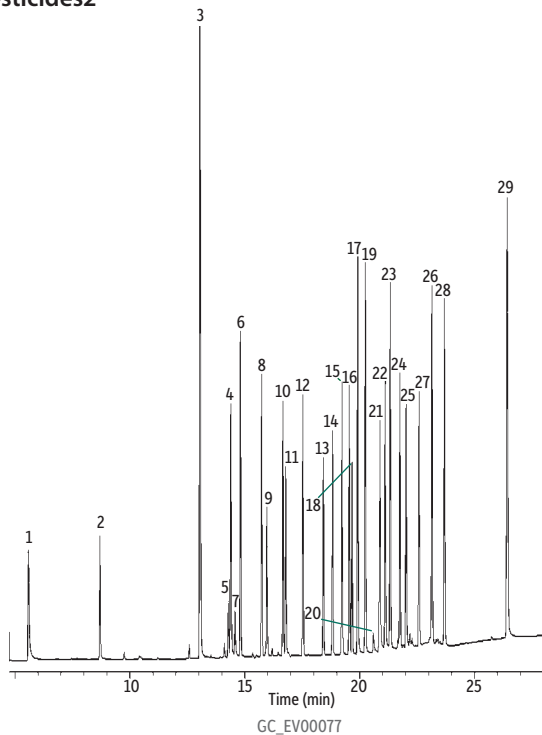
# Organochlorine Pesticides by EPA 8081A on Rtx®-CLPesticides & Rtx®-CLPesticides2

## Rtx®-CLPesticides



- Peaks**
1. Dibromochloropropane
  2. Hexachlorocyclopentadiene
  3. 2,4,5,6-Tetrachloro-*m*-xylene
  4. Hexachlorobenzene
  5. *cis*-Diallate
  6.  $\alpha$ -BHC
  7. *trans*-Diallate
  8.  $\gamma$ -BHC
  9.  $\beta$ -BHC
  10.  $\delta$ -BHC
  11. Heptachlor
  12. Aldrin
  13. Isodrin
  14. Heptachlor epoxide
  15. *trans*-Chlordane\*
  16. *cis*-Chlordane\*
  17. 4,4'-DDE
  18. Endosulfan I
  19. Dieldrin
  20. Chlorobenzilate
  21. Endrin
  22. 4,4'-DDD
  23. Endosulfan II
  24. 4,4'-DDT
  25. Endrin aldehyde
  26. Methoxychlor
  27. Endosulfan sulfate
  28. Endrin ketone
  29. Decachlorobiphenyl

## Rtx®-CLPesticides2



\* For information regarding the nomenclature used for *cis*-chlordane and *trans*-chlordane, visit [www.restek.com/chlordane-notice](http://www.restek.com/chlordane-notice)

- Columns** Rtx®-CLPesticides 30 m, 0.32 mm ID, 0.50  $\mu$ m (cat.# 11139) and Rtx®-CLPesticides2 30 m, 0.32 mm ID, 0.25  $\mu$ m (cat.# 11324)
- Sample** Conc.: 16-160 pg on-column
- Injection** Direct
- Liner:** Drilled Uniliner (hole near top) (cat.# 20335)
- Oven**
- Oven Temp.:** 80 °C (hold 1 min) to 300 °C at 10 °C/min (hold 15 min)
- Carrier Gas** He, constant pressure (8.7 psi, 60.0 kPa)
- Dead Time:** 1.9 min
- Detector** ECD @ 300 °C
- Notes** Flow rate: helium @ 1.3mL/min @ 120°C