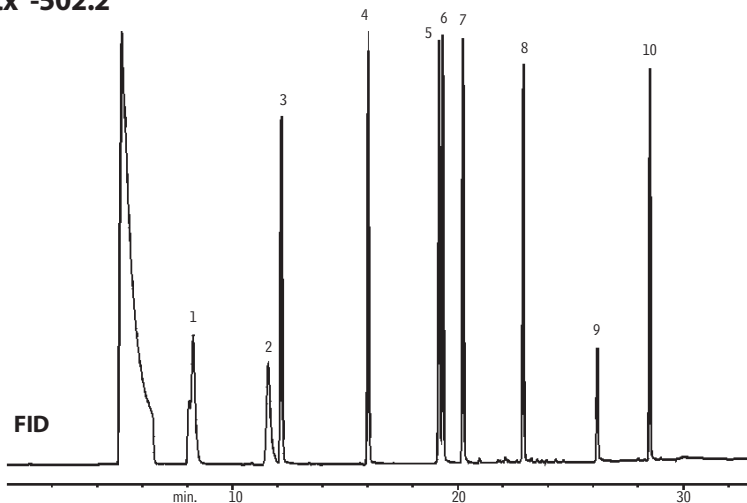


Wisconsin GRO Mix, plus C12 Rtx®-502.2

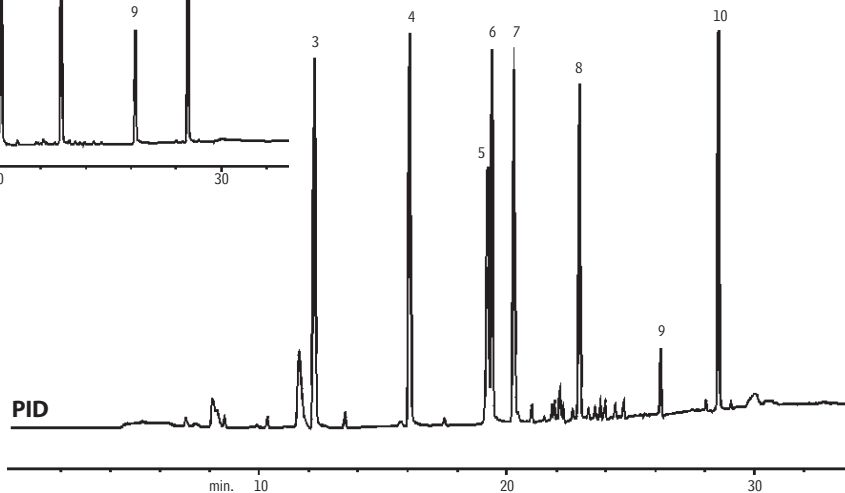


Standard used is GRO Mix (WISC) + C12
(cat.# 30069):

1. 3-methylpentane
2. 2,2,4-trimethylpentane (isooctane)
3. benzene
4. toluene
5. ethylbenzene
6. *m*-xylene
7. *o*-xylene
8. 1,2,4-trimethylbenzene
9. dodecane
10. naphthalene

105m, 0.53mm ID, 3.0 μ m Rtx®-502.2 (cat.# 10910)
GRO + C12 standard.
Conc.: 200ppb each in 5mL of H₂O.

Oven temp.: 40°C (hold 1 min.) to 100°C @ 5°C/min. to 240°C @ 8°C/min. (hold 8 min.)
Inj. / det. temp.: 200°C / 250°C
Carrier gas: helium
Flow rate: 10mL/min.
Trap: Tenax, silica gel, charcoal
Purge: 12 min. @ 40mL/min.
Desorb preheat: 175°C
Desorb temp.: 180°C
Desorb time: 2 min.
Desorb flow: 10mL/min.
FID sensitivity: 16 x 10⁻¹¹ AFS



GC_EV00071