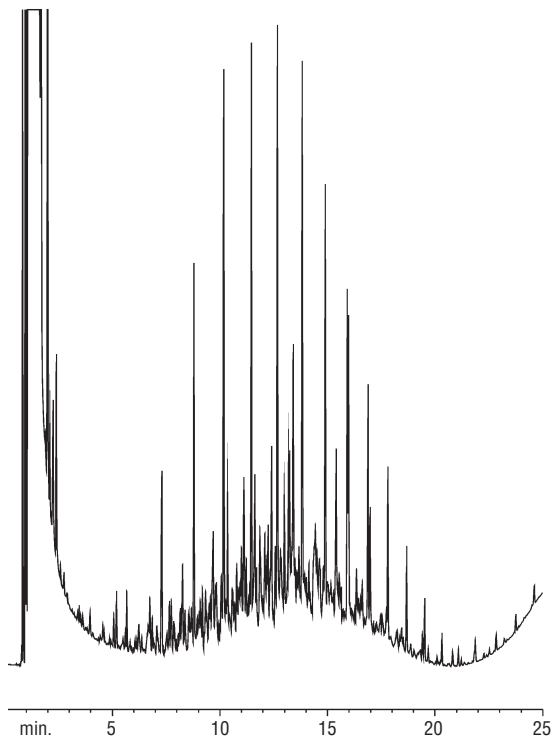


Diesel Fuel Rtx®-5

(direct injection)



GC_EV00070

*Standards used are Diesel Fuel #2 Composite
Standard (cat.# 31093)*

30m, 0.53mm ID, 1.0 μ m Rtx®-5 (cat.# 10255)
Direct injection of a DRO standard
Conc.: 500ng/ μ L

Oven temp.: 40°C (hold 2 min.) to 310°C
@ 12°C/min. (hold 10 min.)
Inj. / det. temp.: 280°C / 310°C
Carrier gas: helium @ 65cm/sec.
FID sensitivity: 8 x 10⁻¹¹ AFS