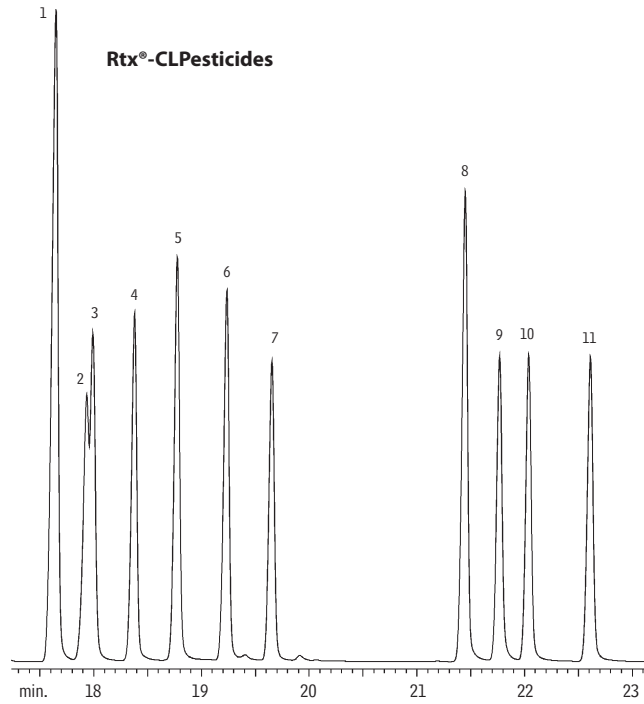
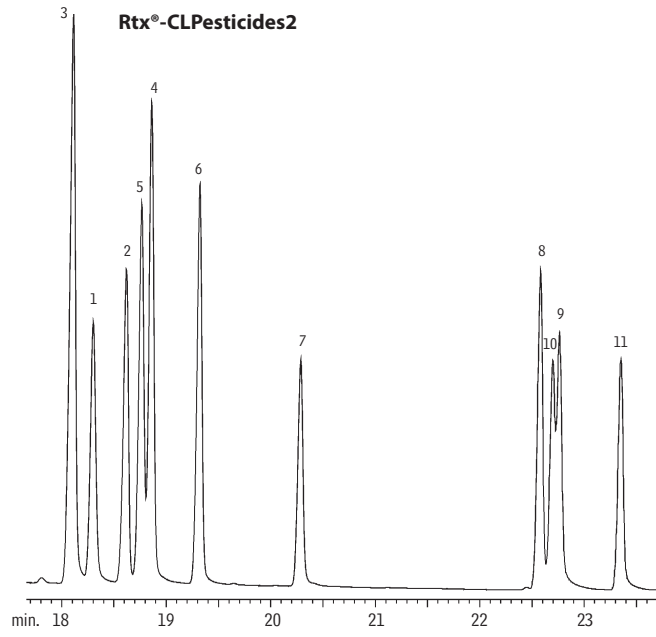


Nitrogen/Phosphorus Pesticides & Herbicides
US EPA Method 619
Rtx®-CLPesticides & Rtx®-CLPesticides2 (dual column analysis)



1. prometon	CAS No.
2. simazine	1610-18-0
3. atraton	122-34-9
4. propazine	1610-17-9
5. atrazine	139-40-2
6. terbutylazine	1912-24-9
7. secbumeton	5915-41-3
8. simetryne	26259-45-0
9. ametryne	1014-70-6
10. prometryne	834-12-8
11. terbutryne	7287-19-6
	886-50-0



GC_EV00056

Columns: Rtx®-CLPesticides, 30m, 0.32mm ID, 0.50µm (cat.# 11139) and
 Rtx®-CLPesticides2, 30m, 0.32mm ID, 0.25µm (cat.# 11324)
 with a 5m, 0.32mm ID guard column (cat.# 10044) and a "Y" Press-Tight® connector (cat.# 20403)
 Inj.: Direct injection using a Uniliner® inlet liner (cat.# 20964) and adaptor for an Agilent 5890 (cat.# 21303)
 Conc.: On-column, 50pg each compound
 Oven temp.: 100°C (hold 0 min.) to 250°C @ 4°C/min. (hold 5 min.)
 Inj./det. temp.: 250°C/275°C
 Carrier gas: hydrogen, 9.65psi constant pressure
 GC: Agilent 6890 with purged packed injection port
 Det: NPD