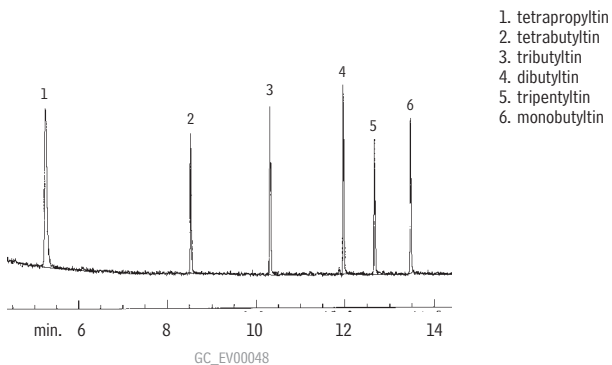


Endocrine Disruptors: Butyl Tins (hexyl derivatives) Rtx[®]-35



30m, 0.32mm ID, 0.50 μ m Rtx[®]-35 (cat.# 10439)
500pg on-column direct injection
Oven temp.: 100°C (hold 1 min.) to 285°C
@ 10°C/min.
Inj./det. temp.: 250°C
Carrier gas: helium
Linear velocity: 45cm/sec.
Detector: FPD with 610nm filter