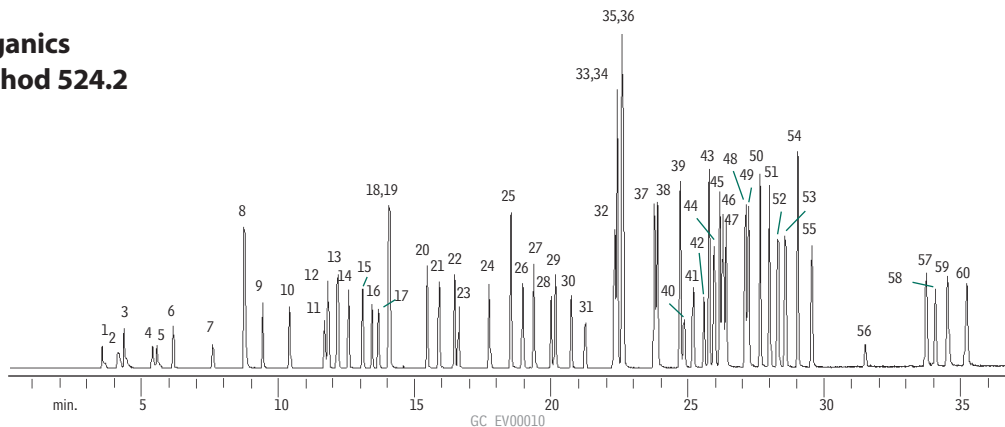


Volatile Organics
US EPA Method 524.2
Rtx®-502.2



40m, 0.18mm ID, 1.0 μ m Rtx®-502.2 (cat.# 40915)
 Conc.: Reference Standard 524 Volatiles Kit (cat. # 30052)
 200ppb VOA standards in 5mL RO water.
 Purge & trap: Tekmar LCS 2000
 Trap: Vocarb 4000
 Purge: 11 min.
 Desorb preheat: 250°C
 Desorb time: 2 min.

Desorb flow rate: 30mL/min.
 Oven temp.: 35°C (hold 4 min.) to 150°C @ 6°C/min. to
 220°C @ 8°C/min. (hold 8 min.).
 Inj. / det. temp.: 200°C / 250°C
 Detector: MS
 Linear velocity: 21cm/sec. set @ 35°C
 Split ratio: 30:1

- | | | | | |
|-------------------------------------|---------------------------------------|-------------------------------|--------------------------------|--------------------------------------|
| 1. dichlorodifluoromethane | 14. chloroform | 27. 1,1,2-trichloroethane | 40. bromoform | 53. 1,4-dichlorobenzene |
| 2. chloromethane | 15. 1,1,1-trichloroethane | 28. 1,3-dichloropropane | 41. 1,1,2,2-tetrachloroethane | 54. <i>n</i> -butylbenzene |
| 3. vinyl chloride | 16. 1,1-dichloropropene | 29. tetrachloroethene | 42. 1,2,3-trichloropropane | 55. 1,2-dichlorobenzene |
| 4. bromomethane | 17. carbon tetrachloride | 30. dibromochloromethane | 43. propylbenzene | 56. 1,2-dibromo-3-chloro-
propane |
| 5. chloroethane | 18. benzene | 31. ethylene dibromide | 44. bromobenzene | 57. 1,2,4-trichlorobenzene |
| 6. trichlorofluoromethane | 19. 1,2-dichloroethane | 32. chlorobenzene | 45. 1,3,5-trimethylbenzene | 58. hexachlorobutadiene |
| 7. 1,1-dichloroethene | 20. trichloroethene | 33. ethylbenzene | 46. 2-chlorotoluene | 59. naphthalene |
| 8. methylene chloride | 21. 1,2-dichloropropane | 34. 1,1,1,2-tetrachloroethane | 47. 4-chlorotoluene | 60. 1,2,3-trichlorobenzene |
| 9. <i>trans</i> -1,2-dichloroethene | 22. bromodichloromethane | 35. <i>m</i> -xylene | 48. <i>tert</i> -butylbenzene | |
| 10. 1,1-dichloroethane | 23. dibromomethane | 36. <i>p</i> -xylene | 49. 1,2,4-trimethylbenzene | |
| 11. 2,2-dichloropropane | 24. <i>cis</i> -1,3-dichloropropene | 37. <i>o</i> -xylene | 50. <i>sec</i> -butylbenzene | |
| 12. <i>cis</i> -1,2-dichloroethene | 25. toluene | 38. styrene | 51. <i>p</i> -isopropyltoluene | |
| 13. bromochloromethane | 26. <i>trans</i> -1,3-dichloropropene | 39. isopropylbenzene | 52. 1,3-dichlorobenzene | |