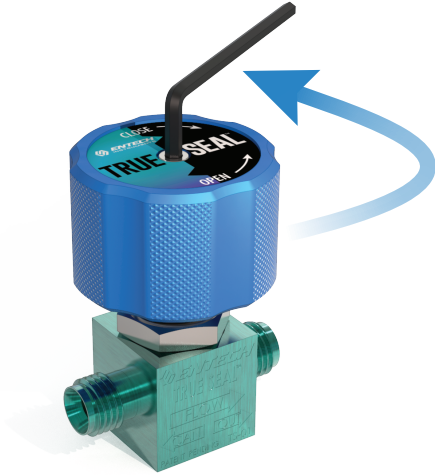
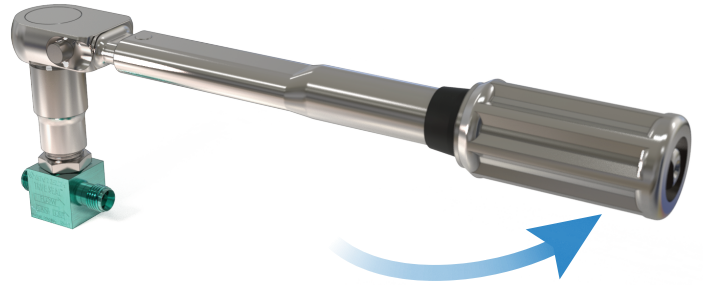


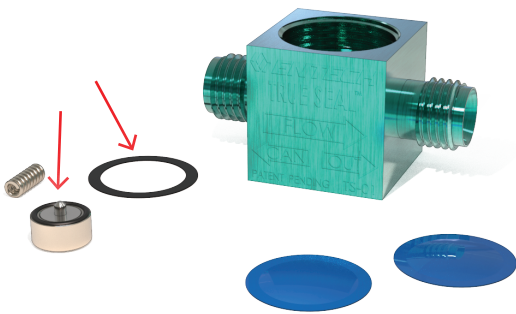
1. Loosen the socket screw with an Allen wrench and remove the knob from the valve.



2. Be sure to have the valve in the open position and loosen the Actuator Stem Guide with a 1/2" socket and a standard wrench with a 9-10" handle in the Counterclockwise direction. Then separate the Actuator Stem Guide from the Valve Body.

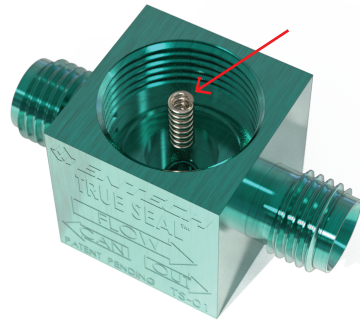


3. Empty out all of the internals out of the TrueSeal body, placing the top diaphragm separate from the rest of the parts. Discard the Open/Close Valve Stop and the Sealing Washer.

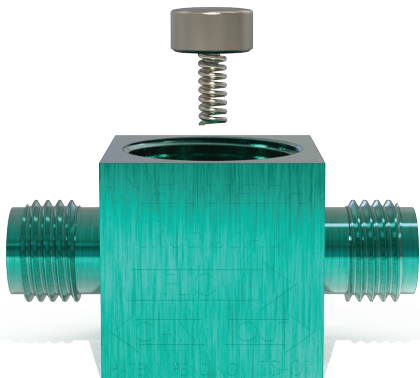


4. Insert Compression spring into the TrueSeal Valve body.

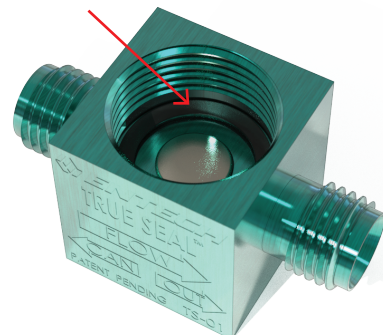
Use the replacement parts from the repair kit for the following four steps.



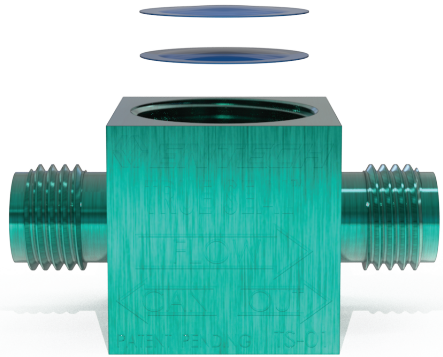
5. Place the Open/Close Valve stop above the compression spring .



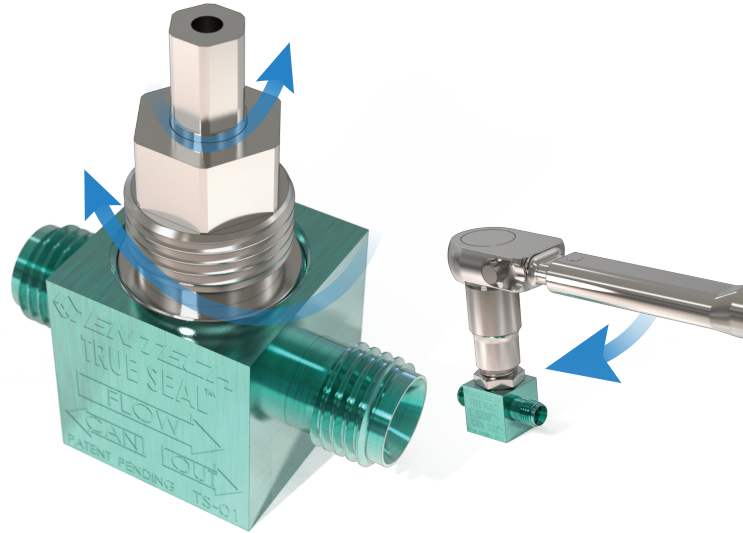
6. Place the Sealing Washer into the TrueSeal Valve body as shown below.



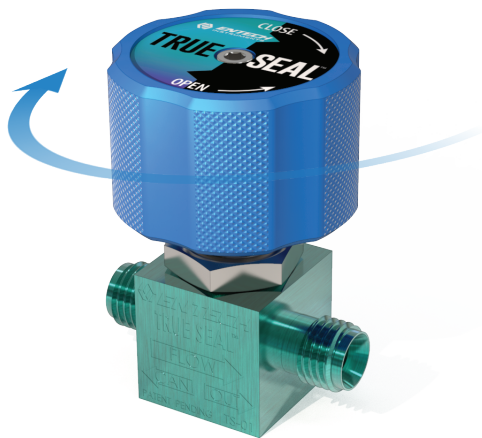
7. With Valve domes facing upward, place the two Valve Diaphragms above the Sealing Washer, making sure the diaphragms are placed in the same order they came out.



8. Hand tighten the Actuator Stem guide into the TrueSeal Valve body. Make sure the Actuator is fully rotated Counter Clockwise before continuing. After hand tightening, use a torque wrench with a 1/2" hex socket to tighten at 420 in-lbs (35 ft-lbs) to insure proper leak-tight operation.



9. Affix the knob onto the valve assembly and firmly hand crank in a Clockwise (closed) direction to help the valve stop to initially conform into the TrueSeal Valve body (repeat 5 times). Moderately tighten the valve and check for leaks. if the valve leaks, firmly hand crank in the closed position 5 more times. Repeat until leak tight. *The valve has been designed so that it cannot be damaged by hard hand tightening, therefore it may take a little more force to close the valve in normal operaiton.*



10. Finally, attach the knob and socket screw to the TrueSeal Valve assembly by using an Allen wrench to tighten down the assembly.



The TrueSeal rebuild kit, Part # 01-29-TS-KIT1, includes:

- (1) Two Piece Sealing Plug Assembly
- (1) Sealing Washer