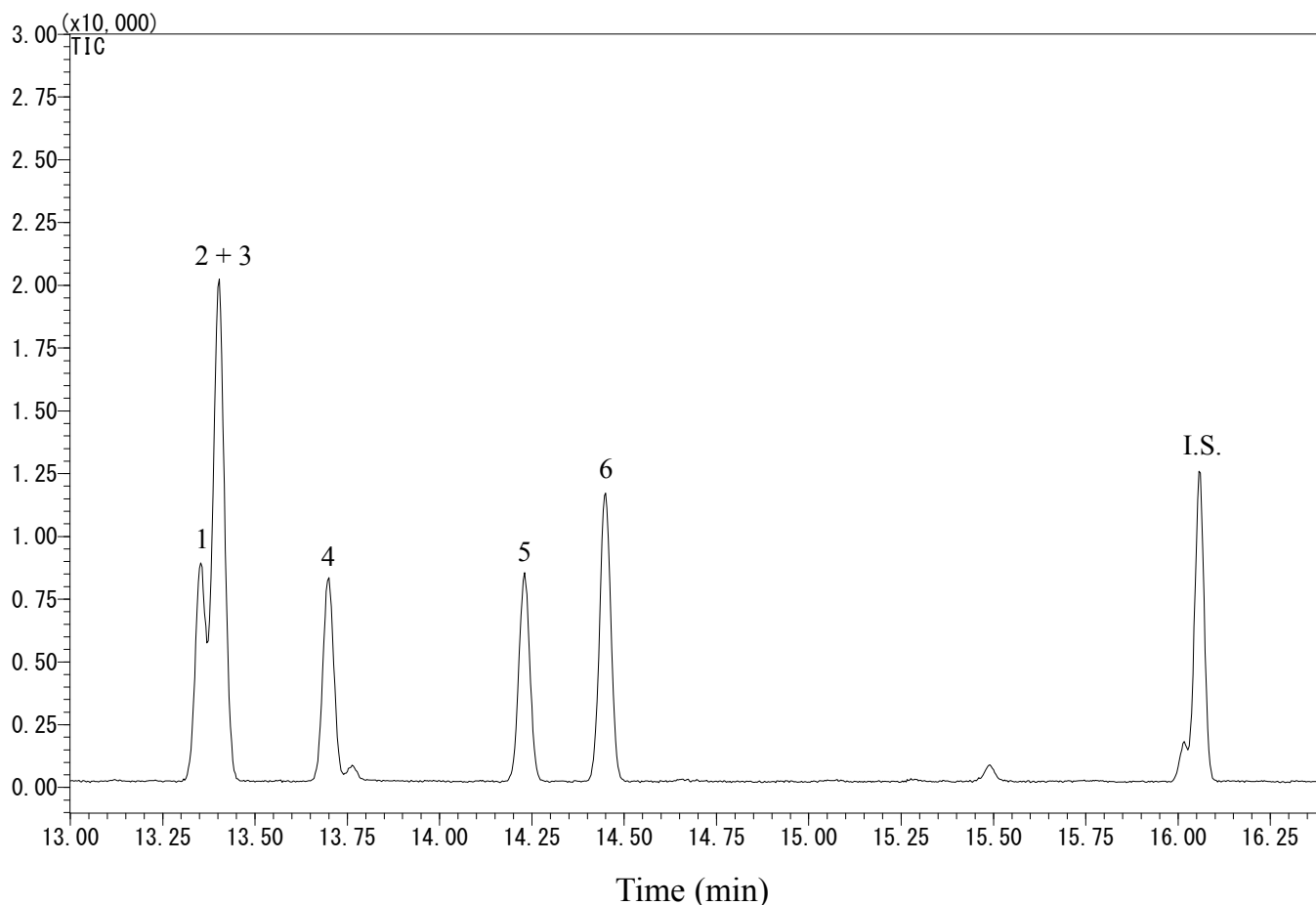


2,4-Dichlorophenol

Data No. GA 254-0644



Conditions

System : GC-MS
Column : InertCap 5MS/Sil
0.25 mm I.D. x 30 m df = 0.25 μ m
Col. Cat. No. : 1010-18642
Col. Temp. : 40 °C (1 min hold) - 10 °C/min - 120 °C
- 5 °C/min - 150 °C - 20 °C/min
- 280 °C (5 min hold)
Carrier Gas : He 36.1 cm/sec
Injection : Splitless 1min
250 °C
Detection : MS SIM
Interface Temp. 280 °C
Sample Size : Analyte in Dichloromethane
1 μ L

Analyte :

1. 2,5-Dichlorophenol (0.1 μ g/mL)
2. 2,6-Dichlorophenol (0.1 μ g/mL)
3. 3,5-Dichlorophenol (0.1 μ g/mL)
4. 2,4-Dichlorophenol (0.1 μ g/mL)
5. 2,3-Dichlorophenol (0.1 μ g/mL)
6. 3,4-Dichlorophenol (0.1 μ g/mL)

I.S. Acenaphthene-*d*10 (0.1 μ g/mL)
(TMS Deriv. by BSTFA)

InertSearch™ for GC

InertCap® Applications

2,4-Dichlorophenol

Data No. GA 254-0644

