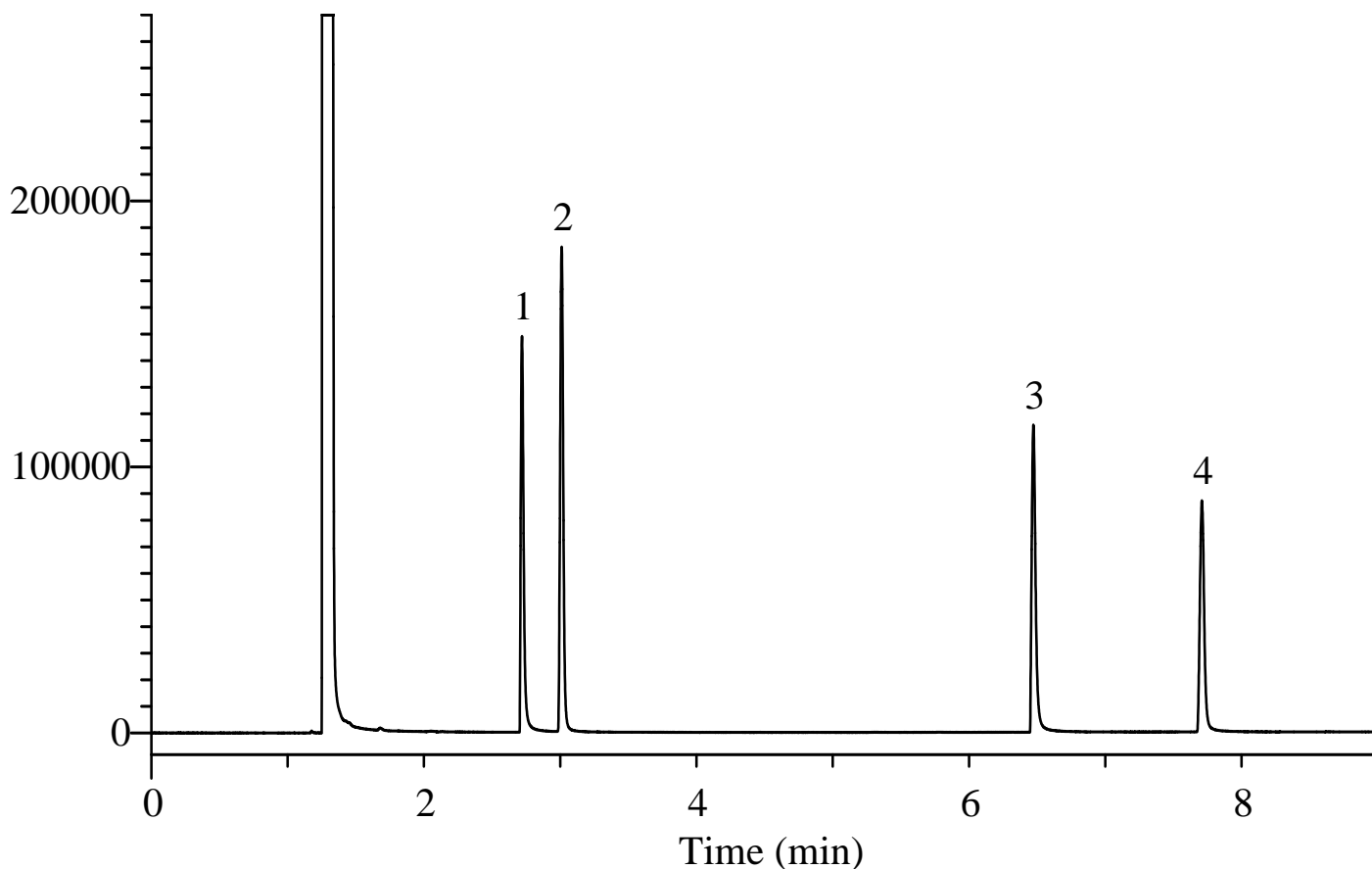


# InertSearch™ for GC

InertCap® Applications

## Glycols & Glycerine

Data No. GA100-0875



### Conditions

**System** : GC/FID  
**Column** : InertCap 1701  
0.32 mm I.D. x 30 m df = 1.0 µm  
**Col. Cat. No.** : 1010-61245  
**Col. Temp.** : 100 °C (5 min hold) - 7.5 °C/min - 220 °C  
**Carrier Gas** : He 100 kPa  
**Injection** : Split flow 53.6 mL/min  
220 °C  
**Detection** : FID Range 10<sup>0</sup>  
250 °C  
**Sample Size** : 500 µg/mL in Methanol  
1 µL

**Analyte** : 1. Ethylene glycol  
2. Propylene glycol  
3. Diethylene glycol  
4. Glycerine

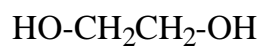
# InertSearch™ for GC

InertCap® Applications

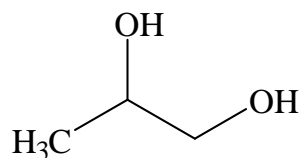
## Glycols & Glycerine

Data No. GA100-0875

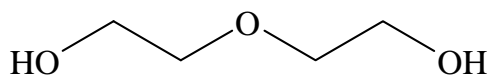
### Chemical Structures



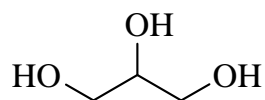
1. Ethylene glycol



2. Propylene glycol



3. Diethylene glycol



4. Glycerine

Structures are created using Chemistry 4-D Draw which is provided by ChemInnovation Software, Inc.