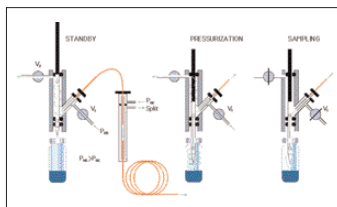


TURBOMATRIX™ HEADSPACE TRAP SAMPLERS

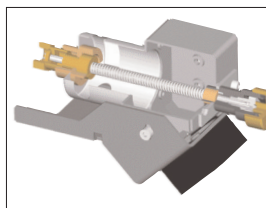
Up to 100 times lower detection limits

Two instruments in one: option to run standard headspace or with trap capability

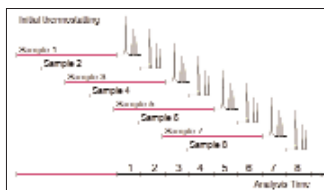
Programmable pneumatic control (PPC) provides flexibility and ease-of-use



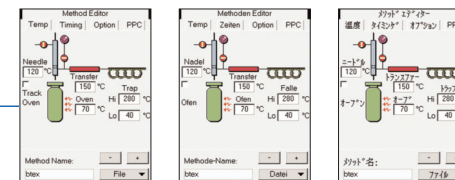
Pressure-balanced technology offers superior repeatability and inert sample path



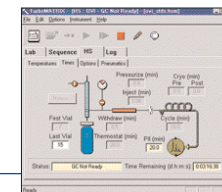
Built-in analyte trapping capability maximize sensitivity and minimize water matrix impact on chromatography for sub-ppb detection of contaminants



Overlapped vial thermostating enhances throughput



Intuitive multilingual touch-screen interface makes operation simple



TotalChrom CDS, Remote Control Software and Waters® Empower® 3 Software for complete 21 CFR part 11 compliance provide a traceable trail from sampling through reporting

Choice of configurations to meet your throughput needs:

- TurboMatrix HS 40 Trap
- TurboMatrix HS 110 Trap

Interfaces with almost any GC regardless of brand or model

The clear choice in gas chromatography. www.perkinelmer.com/GC

PerkinElmer, Inc.
940 Winter Street
Waltham, MA 02451 USA
Phone: (800) 762-4000 or
(+1) 203-925-4602
www.perkinelmer.com



For a complete listing of our global offices, visit www.perkinelmer.com/lasoffices

©2007-2016 PerkinElmer, Inc. All rights reserved. The PerkinElmer logo and design are registered trademarks of PerkinElmer, Inc. TurboMatrix is a trademark and TotalChrom is a registered trademark of PerkinElmer, Inc. or its subsidiaries, in the United States and other countries. All other trademarks not owned by PerkinElmer, Inc. or its subsidiaries that are depicted herein are the property of their respective owners. PerkinElmer reserves the right to change this document at any time without notice and disclaims liability for editorial, pictorial or typographical errors.

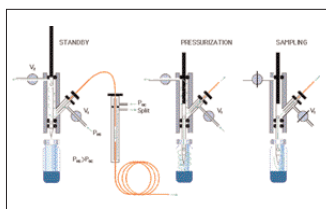
TURBOMATRIX™ HEADSPACE SAMPLERS

The clear choice for any GC or GC/MS volatile-analysis system

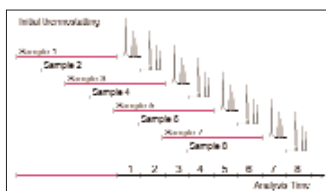


Integrated application packages:

- Blood-alcohol analysis
- Food packaging
- Residual solvents in pharmaceuticals

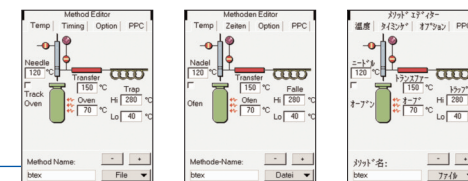


Pressure-balanced technology offers superior repeatability and inert sample path. Injection volume is software settable and independent from split ratio

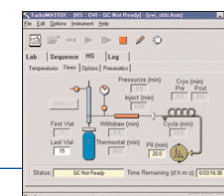


Overlapped vial thermostating enhances throughput (TurboMatrix HS 40 and HS 110)

Optional **programmable pneumatic control (PPC)** provides flexibility and ease-of-use



Intuitive multilingual touch-screen interface makes operation simple



TotalChrom CDS, Remote Control Software and Waters® Empower® 3 Software for complete 21 CFR part 11 compliance provide a traceable trail from sampling through reporting

Choice of configurations to meet your throughput needs:

- TurboMatrix HS 16
- TurboMatrix HS 40
- TurboMatrix HS 110

Interfaces with almost any GC regardless of brand or model

The clear choice in gas chromatography. www.perkinelmer.com/GC

PerkinElmer, Inc.
940 Winter Street
Waltham, MA 02451 USA
Phone: (800) 762-4000 or
(+1) 203-925-4602
www.perkinelmer.com



For a complete listing of our global offices, visit www.perkinelmer.com/lasoffices

©2007-2016 PerkinElmer, Inc. All rights reserved. The PerkinElmer logo and design are registered trademarks of PerkinElmer, Inc. TurboMatrix is a trademark and TotalChrom is a registered trademark of PerkinElmer, Inc. or its subsidiaries, in the United States and other countries. All other trademarks not owned by PerkinElmer, Inc. or its subsidiaries that are depicted herein are the property of their respective owners. PerkinElmer reserves the right to change this document at any time without notice and disclaims liability for editorial, pictorial or typographical errors.