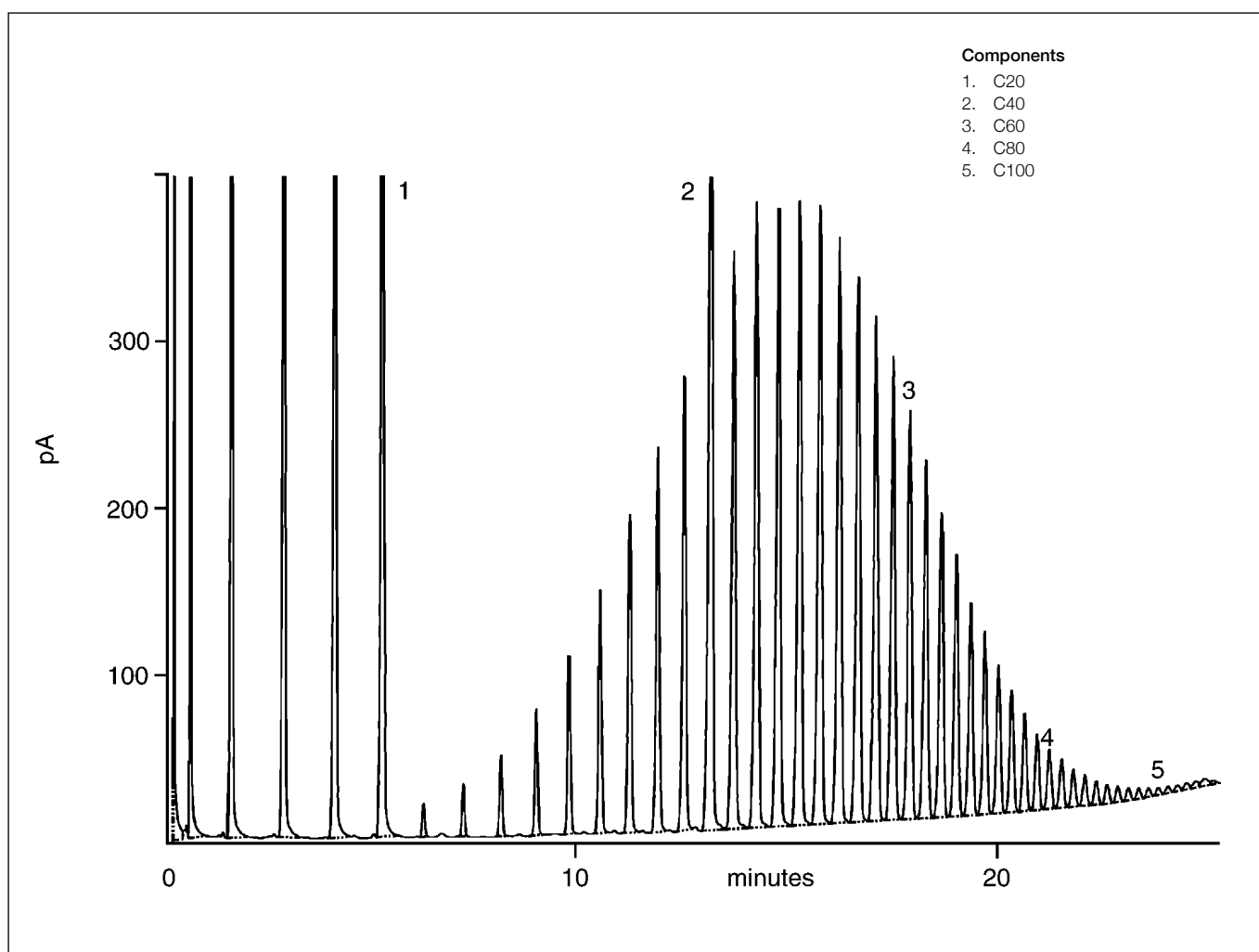


Analysis of polywax 655

BPX1

Column part number	054800		
Phase	BPX1	Final temperature	420°C, 5 min
Column	5 m x 0.53 mm x 0.1 µm	Detector temperature	440°C
Initial temperature	40°C	Carrier gas	He, 10 mL/min
Rate	15°C	Solvent	CS ₂



For more information visit www.trajanscimed.com or contact techsupport@trajanscimed.com