



# Pesticides

## Application Note

Environmental

### Authors

Agilent Technologies, Inc.

### Introduction

High resolution GC/MS analysis of pesticides in strawberry extract on an Agilent VF-5ms column.



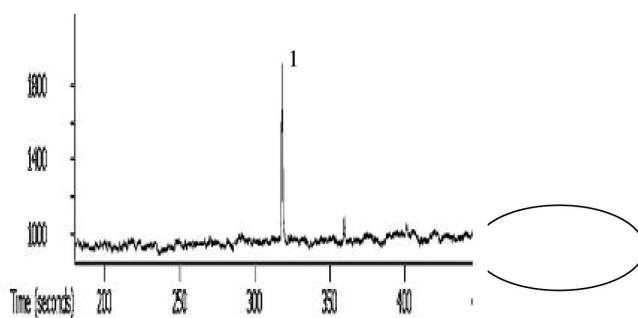
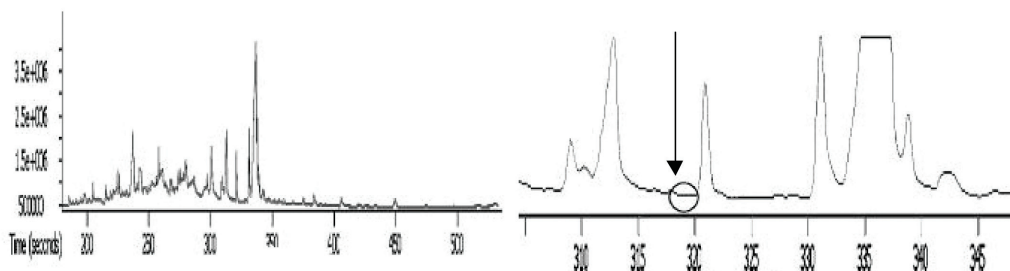
**Agilent Technologies**

## Conditions

Technique : GC  
Column : Agilent VF-5ms, 0.25 mm x 25 m fused silica  
(df = 0.25  $\mu$ m) (Part No. CP8941)  
Temperature : 60 °C, 20 °C/min  $\rightarrow$  300 °C  
Carrier Gas : Helium, 70 kPa  
Injector : Optik 3 with liner exchange unit  
Detector : TOF  
Sample Size : 1.0  $\mu$ L  
Concentration Range : ca. 20 ppb of component on the column  
Sample Preparation : extraction with acetonitrile; addition of  $MgSO_4$  and NaCl; addition of internal standard; centrifugation, aliquotation, addition of  $MgSO_4$  and PSA; gas chromatographic analysis with DMI and TOF/MS  
  
Courtesy : Sjaak de Koning, LECO Instrumente GmbH,  
Mönchengladbach, Germany

## Peak identification

1. chlorpyrifos-ethyl



[www.agilent.com/chem](http://www.agilent.com/chem)

This information is subject to change without notice.

© Agilent Technologies, Inc. 2011

Printed in the USA

31 October, 2011

First published prior to 11 May, 2010

A02074



**Agilent Technologies**