



Phthalate esters

Application Note

Environmental

Authors

Agilent Technologies, Inc.

Introduction

GC/MS of 16 phthalate esters is achieved in 33 minutes using an Agilent CP-Sil 8 CB column.



Agilent Technologies

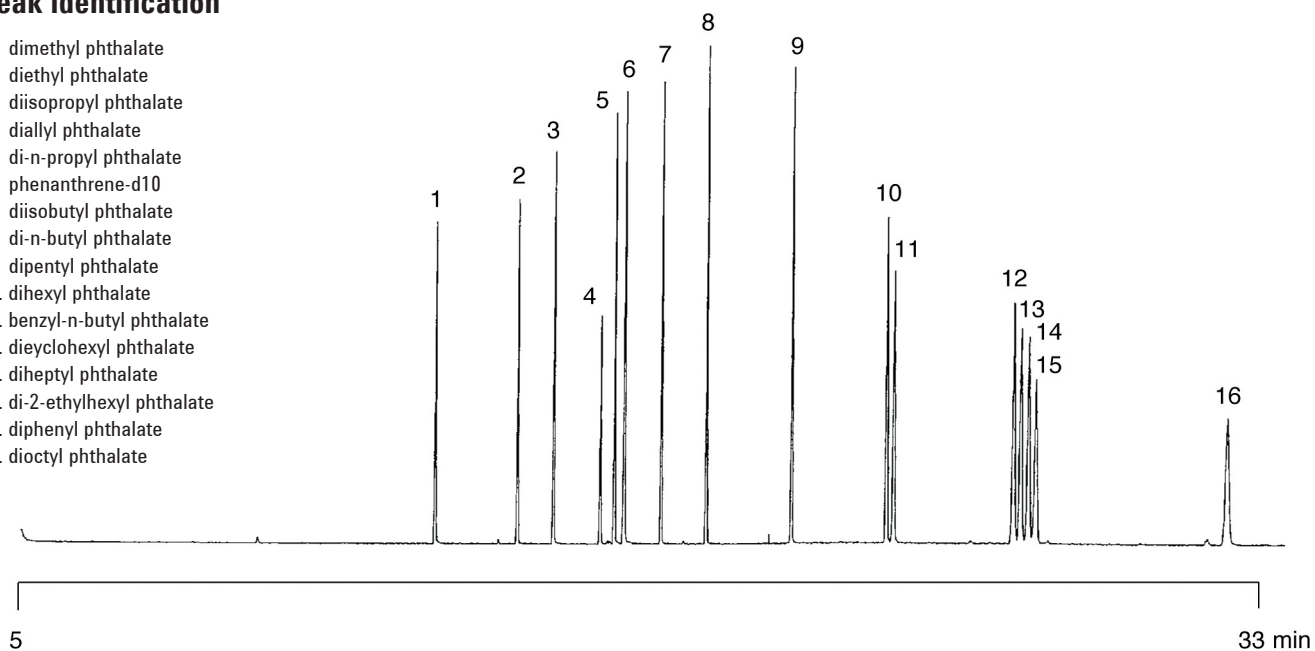
Conditions

Technique : GC-capillary
Column : Agilent CP-Sil 8 CB, 0.25 mm x 30 m fused silica
WCOT (df = 0.25 µm) (Part no. CP8751)
Temperature : 50 °C (2 min) → 250 °C, 10 °C/min
Carrier Gas : He, 75 kPa (0.75 bar, 11 psi)
Injector : Splitless, 1min
T = 250 °C
Detector : MSD, TIC
T = 230 °C
Sample Size : 1 µL
Solvent Sample : acetone

Courtesy : S. Hishimoto, GL Sciences, Japan

Peak identification

1. dimethyl phthalate
2. diethyl phthalate
3. diisopropyl phthalate
4. diallyl phthalate
5. di-n-propyl phthalate
6. phenanthrene-d10
7. diisobutyl phthalate
8. di-n-butyl phthalate
9. dipentyl phthalate
10. dihexyl phthalate
11. benzyl-n-butyl phthalate
12. dicyclohexyl phthalate
13. diheptyl phthalate
14. di-2-ethylhexyl phthalate
15. diphenyl phthalate
16. dioctyl phthalate



www.agilent.com/chem

This information is subject to change without notice.

© Agilent Technologies, Inc. 2011

Printed in the USA

31 October, 2011

First published prior to 11 May, 2010

A01657



Agilent Technologies