



Solvents

Determination of water in solvents

Application Note

Materials Testing & Research

Authors

Agilent Technologies, Inc.

Introduction

Gas chromatography using an Agilent CP-Sil 5 CB column separates water from six solvents in five minutes.



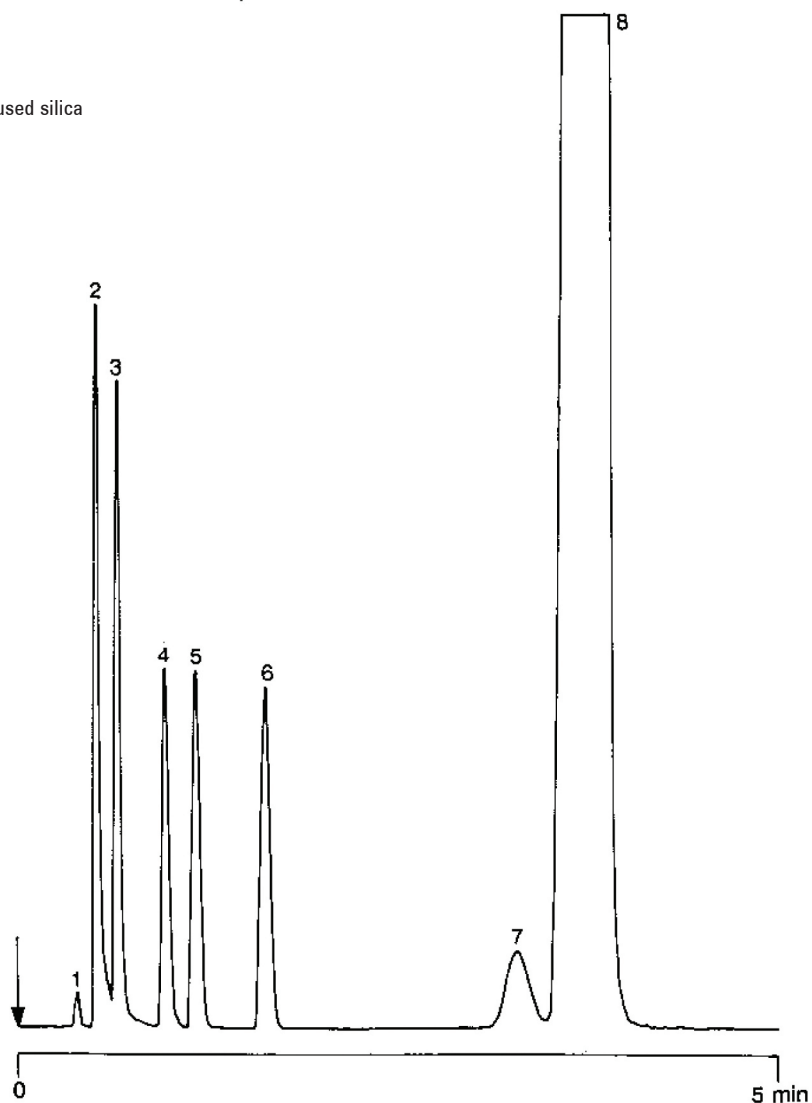
Agilent Technologies

Conditions

Technique : GC-capillary
Column : Agilent CP-Sil 5 CB, 0.53 mm x 50 m fused silica
WCOT CP-Sil 5 CB (df = 5.0 μ m)
(Part no. CP7685)
Temperature : 60 °C
Carrier Gas : H₂, 30 kPa (0.3 bar, 4 psi)
Injector : Direct, 1:100
T = 150 °C
Detector : TCD,
T = 150 °C
Sample Size : 0.5 μ L
Concentration Range : 0.5% v/v
Solvent Sample : tetrahydrofuran (THF)

Peak identification

1. air
2. water
3. methanol
4. ethanol
5. acetone
6. dichloromethane
7. isopropyl ether
8. tetrahydrofuran



www.agilent.com/chem

This information is subject to change without notice.

© Agilent Technologies, Inc. 2011

Printed in the USA

31 October, 2011

First published prior to 11 May, 2010

A00585



Agilent Technologies