



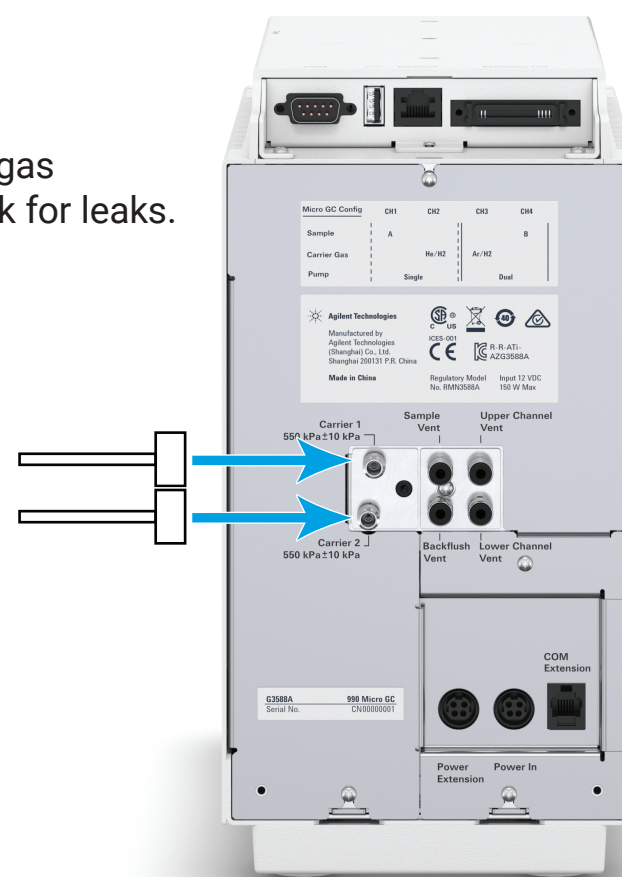
Agilent 990 Micro Gas Chromatograph

Quick Start

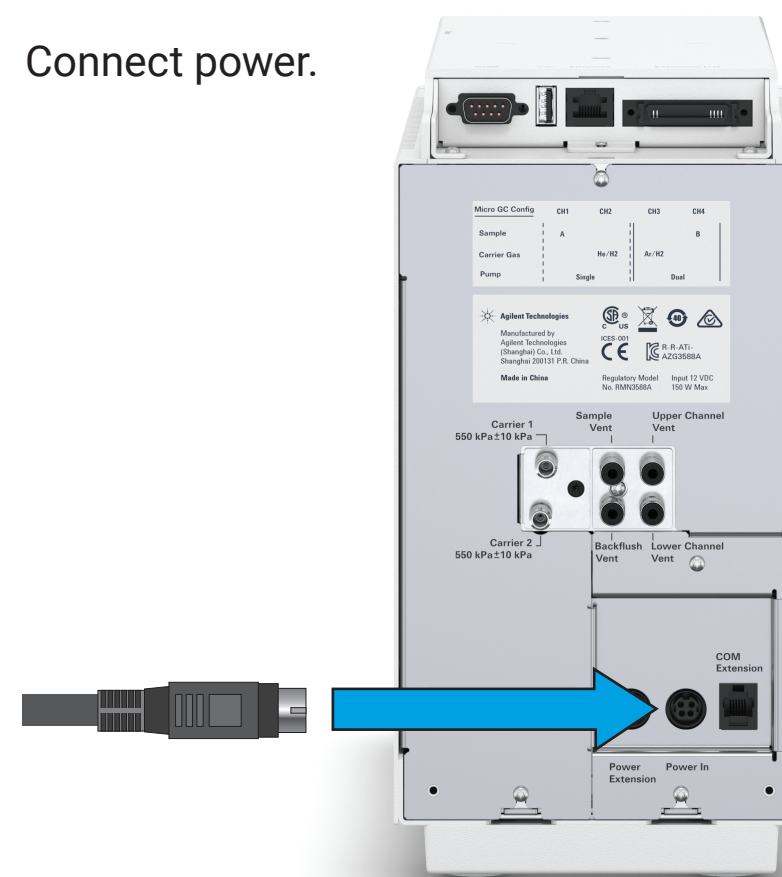
1 Verify the sample inlet type and carrier gas type indicated on the Micro GC configuration label.

Micro GC Config	CH1	CH2	CH3	CH4
Sample	A	B		
Carrier Gas	He/H ₂	He/H ₂		
Pump	Dual			

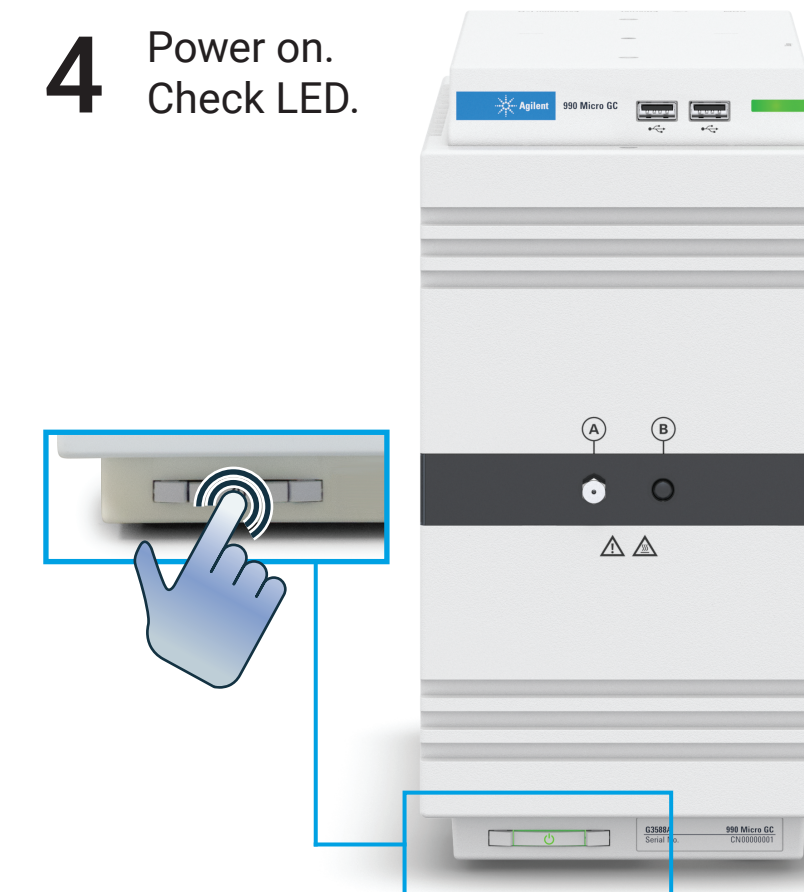
2 Connect gas and check for leaks.



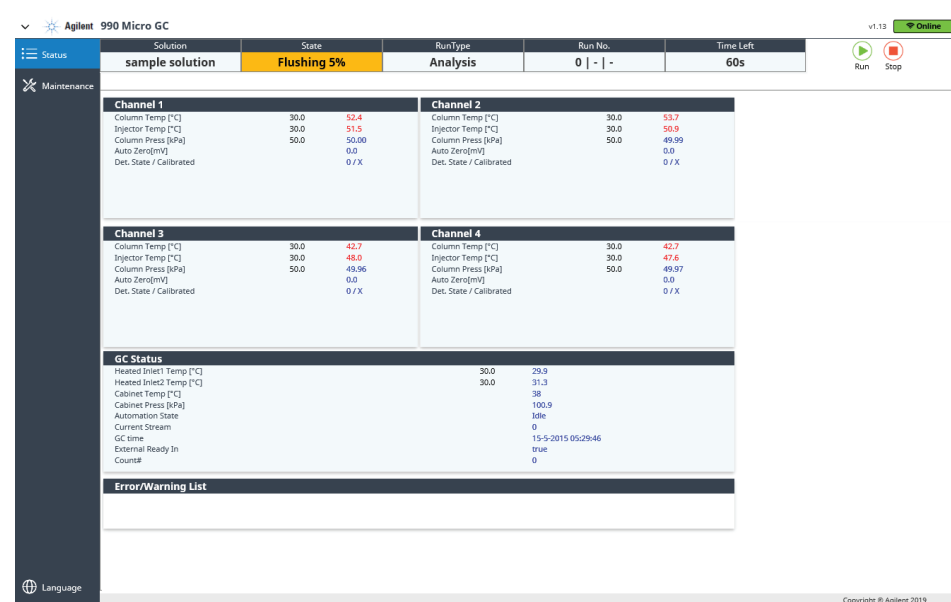
3 Connect power.



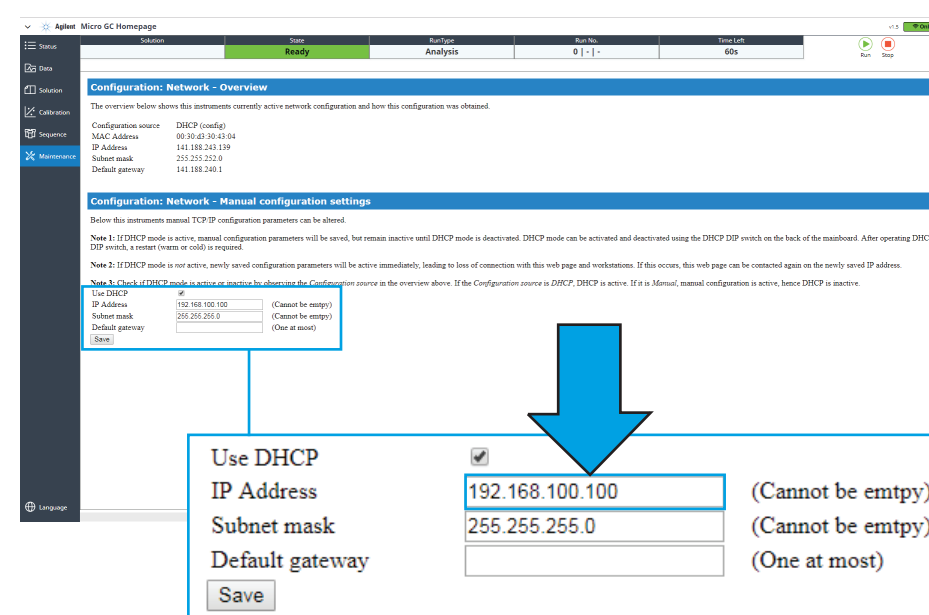
4 Power on. Check LED.



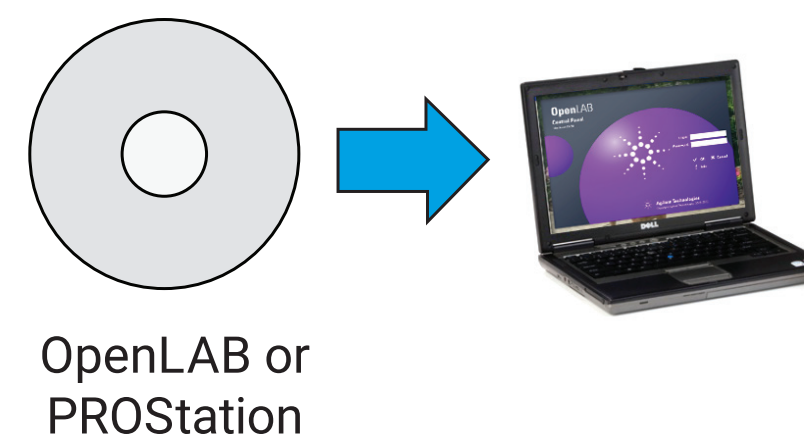
5 The flush cycle will begin automatically.



6 Assign an IP address.



7 Install software onto PC.



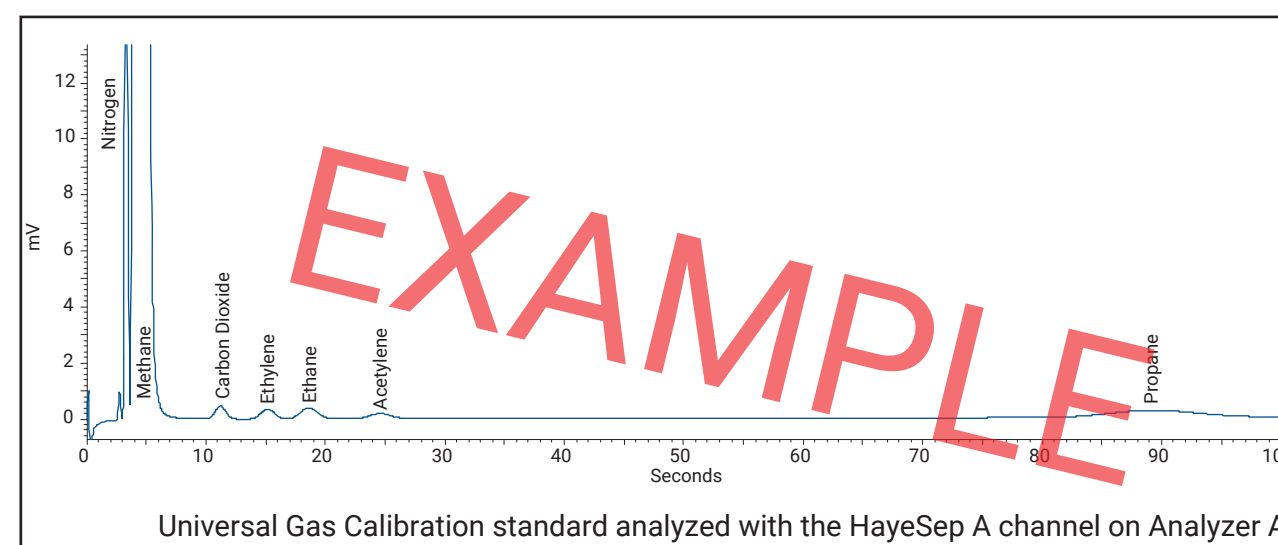
8 Install the sample filter.



9 No checkout sample is included with the Micro GC. Connect an appropriate sample gas or calibration gas.

To perform gas calibration of a natural gas or biogas analyzer (G3599A), connect the included checkout sample gas.

10



Set up methods, start a sample run with a sample gas, calibration gas, or checkout gas, and verify the chromatogram.

