

Monitor Volatile Organic Compounds in Water by Capillary GC – Without Cryogenic Refocusing

Ambient temperature purging and thermal refocusing allows effective extraction and collection of volatile organic compounds. The resulting efficient transfer of the compounds onto a capillary GC column provides excellent separation of the wide range of compounds specified by US EPA methods 502.2 and 524.2. Recovery and relative standard deviation were determined for water samples spiked with the six most volatile VOCs at 4µg/L, and for twelve representative volatiles spiked at 8µg/L in water. A water sample spiked with all 60 compounds was analyzed under the conditions used to analyze the six most volatile compounds. High recovery and low RSD values for most of the compounds demonstrate the usefulness of this technique for monitoring a wide range of compounds.

Key Words:

Carbotrap adsorbent tubes • drinking water • thermal desorption • volatile organic compounds

The purge and trap techniques specified in United States Environmental Protection Agency (US EPA) methods 502.2 (GC-conventional detectors) and 524.2 (GC-mass spectrometry) for monitoring volatile organic compounds (VOCs) in drinking water specify cryogenic refocusing to effectively transfer trapped analytes to the capillary GC column (1). However, ambient-temperature gas purging, followed by thermal refocusing of the sample, using Supelco's thermal extraction system, eliminates the need for cryogenic refocusing.

Six gaseous compounds are the most critical VOCs listed in methods 502.2 and 524.2. Their small molecular size and high volatility cause the lowest breakthrough volume on collection tubes and make them the most difficult compounds to refocus. Multi-bed Carbotrap™ collection and refocusing tubes, developed specifically for this application, allow these compounds (and less problematic VOCs as well) to be efficiently collected and subsequently transferred to the capillary column. These traps are part of a complete analysis system, the other components of which are a Supelco™ Dynamic Thermal Stripper, a Supelco Thermal Desorption Unit* (TDU), and a gas chromatograph equipped with a 60m x 0.32mm ID VOCOL™ capillary column (3.0µm phase film).

The collection tube, an 11.5cm x 4mm ID Carbotrap 302 tube, contains three beds of carbon-based adsorbent: Carbopack™ C, Carbopack B, and Carboxen™ 1001. The multi-bed design provides a wide range of surface areas to adsorb volatile organics according to molecular size. Furthermore, these carbon materials are hydrophobic, and thus adsorb analytes efficiently in the presence of water during the purging process. They also allow the removal of water while purging and during the dry cycle of the extraction process.

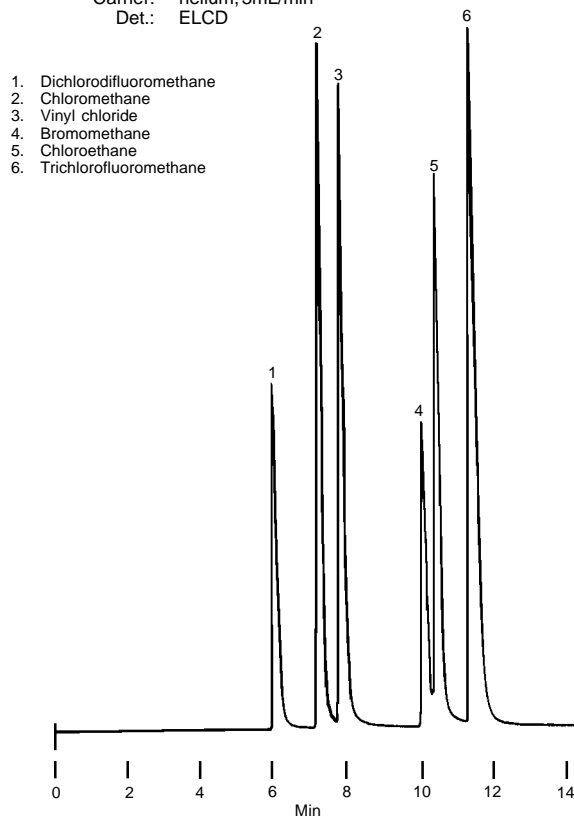
Figure A – Volatile Gases Purged/Thermally Desorbed from Water

Sample: 4µg/L VOC in water

Thermal Stripping
 Purge 40mL/min (10min), ambient, dried at 20mL/min, 44°C (4 min)
 Collection Tube: Carbotrap 302
 Cat. No.: 2-0356

Thermal Desorption
 Refocus Temp.: 300°C (5 min) at 2mL/min
 Refocus Tube: Carbotrap 201
 Desorption Temp.: 350°C (5 min)
 Transfer Line/Valve
 Compartment Temp.: 235°C
 Column & Vent Flow: 3mL/min each

Chromatography
 Column: VOCOL, 60m x 0.32mm ID, 3.0µm film
 Cat. No.: 2-4157
 Col. Temp.: 35°C (8 min), then to 230°C at 4°C/min (4 min)
 Carrier: helium, 3mL/min
 Det.: ELCD



713-1403

The refocusing tube, an 11.5cm x 1mm/0.75mm ID Carbotrap 201 tube containing Carbopack B and Carboxen 1000, is used to collect the analytes desorbed from the larger-capacity Carbotrap 302 collection tube. The narrow ID tube (1mm tapered to 0.75mm) concentrates the sample into a narrow band for rapid, efficient transfer to the capillary column.

The gas purge/thermal refocusing procedure is easily performed. First, inert gas is passed through the sample in the Dynamic Thermal Stripper to purge the analytes, which are collected on the Carbotrap 302 tube. (Up to three 10-100mL samples can be purged simultaneously.) After analyte collection, the Carbotrap 302 tube is inserted in the desorption chamber in the thermal desorption unit and the analytes are thermally desorbed to the Carbotrap 201 refocusing tube in the TDU's secondary trapping port. The Carbotrap 201 tube, containing the refocused analytes, is then placed in the desorption chamber to thermally transfer the analytes to the capillary column. Rapid heating of the refocusing tube in the desorption chamber allows rapid transfer of the analytes onto the capillary column and results in superior separation of these critical compounds (Figure A).

In developing this application, we optimized system operating parameters for the six most volatile compounds. Recovery and relative standard deviation (RSD) data were determined for water samples spiked with our VOC Mix 6 at 4µg/L. High recovery and low RSD values for most of these compounds show the effectiveness of this technique for analysis of the gaseous compounds (Table 1).

We also determined recovery and RSD for twelve regulated volatiles spiked at 8µg/L in water. These compounds (VOC Mix 7) have elution times representative of the entire list of 60 compounds that must be screened. Again, high recovery and low RSD values for most of the compounds demonstrate the usefulness of this technique for monitoring a wide range of compounds (Table 1). A water sample spiked with all 60 compounds was analyzed under the conditions used to analyze the six most volatile compounds (Figure B), except that to detect the compounds we used electrolytic conductivity (ELCD) and photoionization (PID) detectors in series, as recommended by US EPA Method 502.2.

Ambient temperature purging and thermal refocusing, using Supelco's thermal extraction system, allows effective extraction and collection of volatile organic compounds. The resulting efficient transfer of the compounds onto a capillary column provides excellent separation of the wide range of compounds specified by US EPA methods 502.2 and 524.2. The technique is also useful for monitoring VOCs in samples other than drinking water, such as wastewater, groundwater, soils, and sludges. In addition to ambient-temperature extraction of volatiles, the thermal extraction system allows efficient thermal desorption and collection of high molecular weight compounds from difficult sample matrices, providing versatility for labs processing a wide variety of samples.

Table 1. Recovery of Gaseous Volatile Compounds from Water, Using Ambient Temperature Purge/Trap — Thermal Desorption Technique

Compound	Recovery (%)	RSD (%)
VOC Mix 6, 4µg/L each compound		
Dichlorodifluoromethane	84.6	2.9
Chloromethane	57.2	5.3
Vinyl chloride	72.1	5.3
Bromomethane	27.2	7.1
Chloroethane	59.2	6.2
Trichlorofluoromethane	86.2	4.3
VOC Mix 7, 8µg/L each compound		
Vinyl chloride	69.2	5.8
1,1-Dichloroethylene	57.7	2.7
Chloroform	71.6	2.1
1,1,1-Trichloroethane	96.4	4.2
Carbon tetrachloride	73.3	7.2
Benzene	78.9	0.5
1,2-Dichloroethane	70.9	3.2
Trichloroethane	74.1	3.3
Bromodichloromethane	65.5	4.6
Dibromochloromethane	53.4	7.8
Bromoform	38.1	12.7
1,4-Dichlorobenzene	76.8	3.8

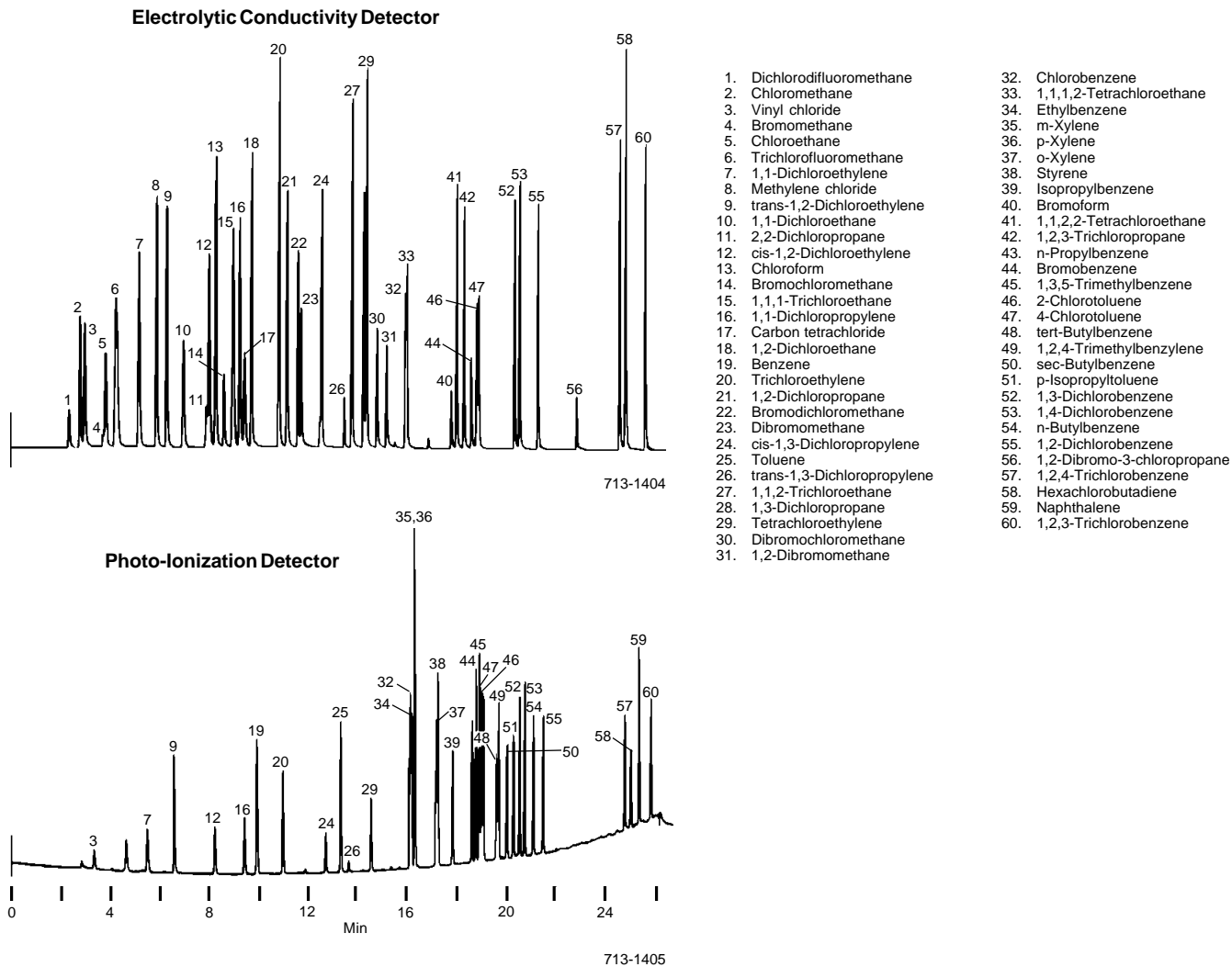
Reference

1. Federal Register 52, No. 130, July 8 1987, pp. 25690-25717.

Trademarks

- Carbopack — Supelco, Inc.
- Carbotrap — Supelco, Inc.
- Carboxen — Supelco, Inc.
- Supelco — Supelco, Inc.
- VOCOL — Supelco, Inc.

Figure B — Volatile Organic Compounds Purged/Thermally Desorbed from Water



Conditions as for Figure A, except: Sample, VOC Mixes 1-6 in water, 8µg/L each component.

Thermal Desorption Unit	See back page	VOC Mixes		
Dynamic Thermal Stripper	See back page	2000µg/mL each component in 1mL methanol.		
VOCOL Capillary Column		VOC Mix 1	4-8775	VOC Mix 5
60m x 0.32mm ID x 3.0µm film	2-4157	VOC Mix 2	4-8777	VOC Mix 6
		VOC Mix 3	4-8779	VOC Mix 7
		VOC Mix 4	4-8786	VOC Mix 8
Carbotrap 302 Tube		For composition, and for other environmental standards, refer to the Supelco catalog.		
11.5cm x 6mm OD x 4mm ID	2-0356			
Carbotrap 201 Tube				
11.5cm x 6mm OD x 1mm/0.75mm ID	2-0361			

*Manufactured by Dynatherm, Inc.

Supelco Thermal Desorption Equipment

Thermal Desorption Unit*

Use our thermal desorption unit to deliver organic compounds onto a GC column *without dilution*. The undiluted samples ensure much greater sensitivity. You also save the time and costs involved in sample desorption. And, because a thermal desorption tube can be reused many times, you save on adsorption tube purchases.

Supelco Thermal Desorption Unit

110VAC	2-2819
220VAC	2-2829

Dynamic Thermal Stripper*

Use our dynamic thermal stripper to purge organic compounds from samples and trap them on a thermal desorption tube. Transfer the tube to a Supelco Thermal Desorption Unit for delivery to a GC column. Purging, trapping, and thermal desorption are highly efficient for PCBs, polynuclear aromatic hydrocarbons, and other water pollutants. You can also use this unit to analyze dry samples (plastics, etc.) by dynamic headspace analysis. The unit will accommodate up to three samples of 10-100ml volume, single samples of larger size.

Supelco Dynamic Thermal Stripper

110VAC	2-2822
220VAC	2-2827

*Manufactured by Dynatherm, Inc.

Purge and Trap Unit*

Collect volatile and some semivolatile organic compounds from solid or liquid matrices — *at ambient temperatures*. This single tube unit offers off-line purge and trap capabilities which are convenient for analyzing smaller numbers of water samples. The unit also heat conditions adsorbent tubes. A very useful accessory for quantitative and qualitative analyses of environmental, food, flavor, and fragrance samples.

Supelco Purge and Trap Unit

110VAC	2-2840
--------	--------

BULLETIN 874A

For more information, or current prices, contact your nearest Supelco subsidiary listed below. If your country is not listed, see the Supelco catalog for a complete list of all Supelco representatives, or contact Supelco, Bellefonte, PA 16823-0048 USA.

ARGENTINA • Sigma-Aldrich de Argentina, S.A. • Buenos Aires 1119 AUSTRALIA • Sigma-Aldrich Pty. Ltd. • Castle Hill NSW 2154 AUSTRIA • Sigma-Aldrich Handels GmbH • A-1110 Wien
BELGIUM • Sigma-Aldrich N.V./S.A. • B-2880 Bornem BRAZIL • Sigma-Aldrich Quimica Brasil Ltda. • 01239-010 São Paulo, SP CANADA • Sigma-Aldrich Canada, Ltd. • 2149 Winston Park Drive, Ontario L6H 6J8
CZECH REPUBLIC • Sigma-Aldrich s.r.o. • 186 00 Praha 8 FINLAND • Sigma-Aldrich Finland/YA-Kemia Oy • FIN-00700 Helsinki FRANCE • Sigma-Aldrich Chimie • 38297 Saint-Quentin-Fallavier Cedex
GERMANY • Sigma-Aldrich Chemie GmbH • D-82041 Deisenhofen GREECE • Sigma-Aldrich (o.m.) Ltd. • Ilioupoli 16346, Athens HUNGARY • Sigma-Aldrich Kft. • H-1067 Budapest
INDIA • Sigma-Aldrich Co. • Hyderabad 500 033 IRELAND • Sigma-Aldrich Ireland Ltd. • Dublin 24 ISRAEL • Sigma Israel Chemicals Ltd. • Rehovot 76100 ITALY • Sigma-Aldrich s.r.l. • 20151 Milano
JAPAN • Sigma-Aldrich Japan K.K. • Chuo-ku, Tokyo 103 MEXICO • Sigma-Aldrich Quimica S.A. de C.V. • 14210 México D.F. NETHERLANDS • Sigma-Aldrich Chemie BV • 3331 LL Zwijndrecht
NORWAY • Sigma-Aldrich Norway • Torshov • N-0401 Oslo POLAND • Sigma-Aldrich Sp. z o.o. • 61-663 Poznań SINGAPORE • Sigma-Aldrich Pte. Ltd.
SOUTH AFRICA • Sigma-Aldrich (pty) Ltd. • Midrand 1685 SPAIN • Sigma-Aldrich Quimica, S.A. • 28100 Alcobendas, Madrid SWEDEN • Sigma-Aldrich Sweden AB • 135 70 Stockholm
SWITZERLAND • Supelco • CH-9471 Buchs UNITED KINGDOM • Sigma-Aldrich Company Ltd. • Poole, Dorset BH12 4QH
UNITED STATES • Supelco • Supelco Park • Bellefonte, PA 16823-0048 • Phone 800-247-6628 or 814-359-3441 • Fax 800-447-3044 or 814-359-3044 • email:supelco@sial.com

G

Supelco is a member of the Sigma-Aldrich family. Supelco products are sold through Sigma-Aldrich, Inc. Sigma-Aldrich warrants that its products conform to the information contained in this and other Sigma-Aldrich publications. Purchaser must determine the suitability of the product for a particular use. Additional terms and conditions may apply. Please see the reverse side of the invoice or packing slip.