

# RESOLVE YOUR SEARCH FOR PRECISION, RELIABILITY, AND THE LOWEST DETECTION LIMITS



The Measure of Confidence

## The New Agilent 7000C Triple Quadrupole GC/MS

The Agilent 7000C Triple Quadrupole GC/MS builds on a 45-year tradition of leadership and innovation to create the industry's best, most reliable GC/MS system for trace analysis.

This advanced instrument provides everything you need to take your lab to a higher plane of productivity and confidence – including low detection limits, robustness, and software tools that simplify method optimization and lower your operating costs. Its also integrates seamlessly with the Agilent 7890B GC.

What's more, every 7000C system conforms to strict quality standards, so you can be sure you're getting the most reliable data... both today and in the future.



**Agilent Technologies**

# THE AGILENT 7000C TRIPLE QUADRUPOLE GC/MS

## WORK SMARTER WITH INTEGRATED GC, MS, AND SOFTWARE TECHNOLOGIES

### Integrated GC↔MS communication and safety controls

- ▶ Direct communication between GC and MS helps detect faults – protecting *both* instruments
- ▶ Designed for hydrogen carrier gas, so you can switch from helium to less expensive carrier gases for faster analysis and greater chromatographic resolution

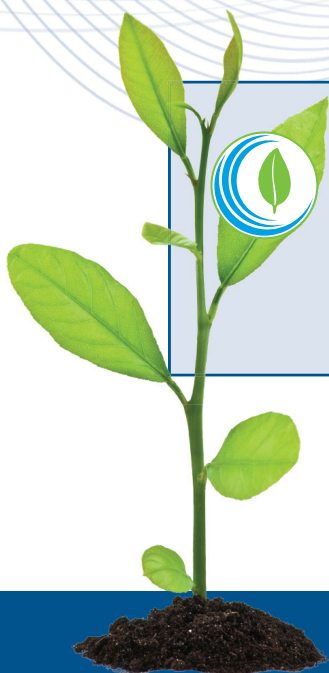
### Automated Self-Cleaning Ion Source\*

- ▶ Reduces contamination build-up and keeps the source operational
- ▶ Maintains performance, saves time, and increases productivity

\*Available on select PAH applications.

### Eco-friendly operation

- ▶ Sleep/Wake modes can easily be set to suit your schedule
- ▶ Conserves energy and carrier gas



## Early Maintenance Feedback

### Long-term reliability and performance

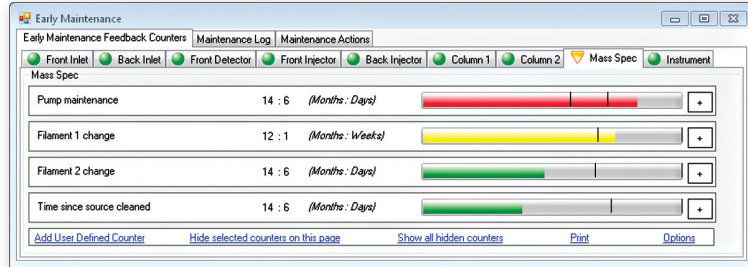
- ▶ Modular analyzer design simplifies routine maintenance
- ▶ Early Maintenance Feedback (EMF) alerts you to minor problems before they lead to a major breakdown

### The industry's best software platform

- ▶ MassHunter lets you optimize your workflow to generate answers quickly and confidently
- ▶ Built-in GC calculators and translators reduce method development time
- ▶ New Parts Finder tool quickly identifies parts and part numbers for easy re-ordering

### Higher productivity and lower cost of operation

- ▶ New Quick Vent lets you spend less time on maintenance, and more time running samples
- ▶ Backflush Wizard makes backflush optimization fast and easy





## Our catalog of new applications is ever growing.

To learn more about the Agilent 7000C Triple Quadrupole GC/MS, visit us online at

[agilent.com/chem/7000C](http://agilent.com/chem/7000C)

Learn more:

[agilent.com/chem](http://agilent.com/chem)

Buy online:

[agilent.com/chem/store](http://agilent.com/chem/store)

Find an Agilent customer center in your country:

[agilent.com/chem/contactus](http://agilent.com/chem/contactus)

U.S. and Canada

**1-800-227-9770**

option 3, then option 3 again

[agilent\\_inquiries@agilent.com](mailto:agilent_inquiries@agilent.com)

In other countries, please call your local Agilent Representative or Agilent Authorized Distributor – visit [agilent.com/chem/contactus](http://agilent.com/chem/contactus)

## The Agilent 7000C Triple Quadrupole GC/MS Unprecedented reliability, system intelligence, and limits of detection

- **Lower detection limits** give you ultimate confidence in your trace-level analysis
- **Second-generation extractor EI or PCI/NCI Ion source** with improved thermal profile delivers stable performance
- **MRM method generation** is efficient, yet easily customizable
- **The Pesticides and Environmental Pollutants MRM Database** is the most comprehensive database providing pertinent MS/MS parameters
- **Inert Flow Path solutions** create an inert sample path for higher sensitivity, accuracy, and reproducibility – especially at trace levels
- **MassHunter software** streamlines your workflow from instrument tune to report generation
- **Direct GC⇌MS communication** minimizes downtime while conserving power and gas
- **Integrated parts database** makes it easy to find and order columns, parts, and supplies
- **Early maintenance feedback** keeps the system performing at its best
- **Eco-friendly features**, such as Sleep/Wake modes, conserve electricity and other resources
- **Secure data storage, archival, and search** with OpenLAB
- **Agilent service and support** maximize your uptime and your return on investment

## Agilent Value Promise

We guarantee you at least 10 years of instrument use from your date of purchase, or we will credit you with the residual value of the system toward an upgraded model.

To learn more about the Agilent 7000C Triple Quadrupole GC/MS, visit [www.agilent.com/chem/7000C](http://www.agilent.com/chem/7000C)



Agilent 5977E GC/MSD



Agilent 5975T LTM GC/MSD



Agilent 5977A GC/MSD



Agilent 7200 Q-TOF GC/MS



Agilent 240 Ion Trap GC/MS

This information is subject to change without notice.

© Agilent Technologies, Inc. 2013  
Printed in the USA September 16, 2013  
5991-3200EN



**Agilent Technologies**