

Formulation Stability and Intervendor Comparison of Tetraethylpyrophosphate (TEPP) and Analysis by GC

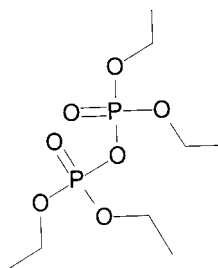
Supelco and Chem Service Inc. conducted independent studies to monitor the decomposition of TEPP in solution. The real-time study made by Chem Service supported the findings in Supelco's accelerated study that different decomposition products are formed, depending on the amount of water present in the solution.

Key Words:

- TEPP • tetraethylpyrophosphate
- diethyl phosphoric acid

Tetraethylpyrophosphate (TEPP, Figure A) is a total-kill pesticide that is very hazardous to handle. Fortunately, TEPP (CAS No. 107-49-3) is very unstable in the presence of water (a half-life of about 7 hours at pH 7 and 25°C), and its decomposition product, diethyl phosphoric acid (CAS No. 598-02-7), is relatively non-hazardous. Because it is sensitive to water, TEPP is difficult to prepare as a stable calibration standard.

Figure A. Tetraethylpyrophosphate



797-0388

Nearly all solvents contain small quantities of water. Hexane, for example, contains about 60ppm water and must be dried thoroughly, even for short-term use. A TEPP solution should be prepared entirely under nitrogen in a dry solvent, such as in a nitrogen-filled glovebag.

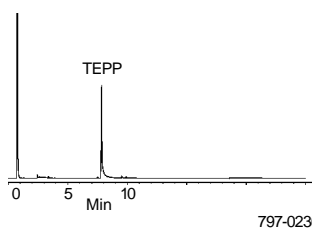
We prepared a fresh solution of neat TEPP at 1000µg/mL in anhydrous hexane. We also used a commercial supplier's stock TEPP solution in 100µg/mL methanol as received. We manipulated both solutions in a nitrogen glove box, and assayed them by GC/NPD (nitrogen-phosphorous detector) and GC/MS (mass spectrometry). The fresh anhydrous Supelco™ solution (Figure B1) yielded a TEPP peak at 7.8 minutes. The competitor's product (Figure B2) did not show a TEPP peak. The product had presumably decomposed in storage to diethyl phosphoric acid.

The TEPP identification was verified against the HPPEST library and the NBS75K library. Interestingly, the TEPP fragmentation patterns shown by the two libraries differed. We ultimately determined that the fragmentation pattern shown by the HPPEST library was correct (Figure C1). The NBS75K library fragment pattern (Figure C2) was that of diethyl pyrophosphate (CAS No. 1077-71-7).

Figure B. Comparison of TEPP Solutions

Column: SPB-608, 30m x 0.53mm ID x 0.5µm film
Cat. No.: 25312
Oven: 40°C to 300° at 10°C/min
Det.: nitrogen-phosphate detector, 320°C
Inj.: 150°C

B1 – Supelco Solution Prepared Under Nitrogen in Anhydrous Hexane



B2 – Competitor's Solution Prepared in Methanol (no TEPP visible)

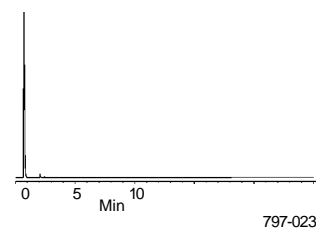
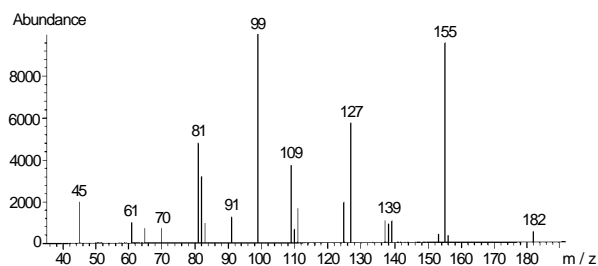


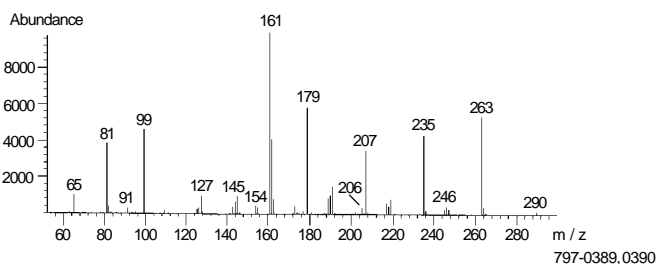
Figure C. Fragmentation Patterns

Column: SPB-608, 30m x 0.53mm ID x 0.5µm film
Cat. No.: 25312
Oven: 40°C to 300° at 10°C/min
Det.: nitrogen-phosphate detector, 320°C
Inj.: 150°C

C1 – HPPEST Library Pattern of TEPP



C2 – NBS75K Library Pattern Determined to be Diethyl pyrophosphate



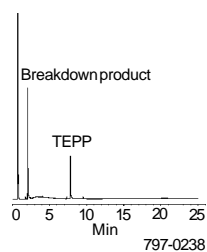
797-0389, 0390

To verify the decomposition products in methanol solution, Supelco and Chem Service Inc. designed several decomposition studies. In an accelerated decomposition study, Supelco used neat TEPP to prepare three 1000µg/mL solutions — in methanol, in anhydrous hexane, and in hexane spiked with water. The samples were heated for 4 days at 60°C and analyzed by GC/NPD. The study resulted in three different decomposition patterns, each with varying phosphorous-containing peaks.

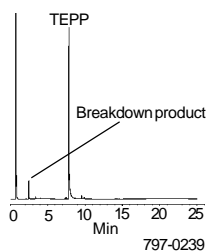
- The decomposition in methanol (<0.01% water) yielded a large breakdown peak at 2 minutes, followed by the smaller TEPP peak (Figure D1). Interpretation of the GC/MS fragmentation pattern showed the breakdown peak to be diethyl methylphosphate.
- Decomposition in anhydrous hexane (Figure D2) was minimal. Interpretation of the fragmentation patterns showed this breakdown peak, at 2.5 minutes, to be diethyl pyrophosphate. TEPP decomposition in anhydrous hexane was less than that in methanol, and yielded a different breakdown product.
- The decomposition in hexane spiked with water (Figure D3) showed results similar to those in Figure B2. This pattern suggests the formation of a different breakdown product not detectable by GC, possibly the diethyl phosphoric acid.

Figure D. Accelerated Decomposition Study

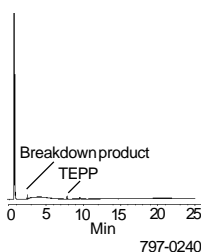
D1 – TEPP in Methanol



D2 – TEPP in Anhydrous Hexane



D3 – TEPP in Hexane Spiked with Water



Analytical conditions: see Figure B

Chem Service performed real-time decomposition studies, verifying our findings that different decomposition products are formed. Chem Service prepared solutions from neat TEPP in methanol and in methanol spiked with water. The samples were analyzed by GC/MS. TEPP was still present in the sample but at a reduced concentration. The two unknown peaks detected in the commercial methanol solution and in the accelerated study were reproduced in the real-time study. The early peak in the Chem Service study occurred at about 3 minutes, giving a fragmentation pattern interpreted as diethylmethyl phosphate. A second peak, about 30 seconds later, gave a fragmentation pattern interpreted as diethyl pyrophosphate.

The studies suggest different decomposition paths depending on solvent and on the amount of water present in the solution. Neat TEPP, packaged and stored under nitrogen, maintains its structural integrity during storage. However, the integrity of TEPP in solution is highly questionable.

Ordering Information:

Description	Cat. No.
Tetraethylpyrophosphate	
Neat, 1g	PS601
SPB™-608 Fused Silica Capillary Column	
30m x 0.53mm ID, 0.5µm film	25312
PTE™-5 Fused Silica Capillary Column	
30m x 0.53mm ID, 0.25µm film	24135-U

PTE, SPB, and Supelco are trademarks of Sigma-Aldrich Co.

Fused silica columns manufactured under HP US pat. no. 4,293,415.

Contact our Technical Service Department (phone 800-359-3041 or 814-359-3041, FAX 800-359-3044 or 814-359-5468) for expert answers to your questions.

Note 137

For more information, or current prices, contact your nearest Supelco subsidiary listed below. To obtain further contact information, visit our website (www.sigma-aldrich.com), see the Supelco catalog, or contact Supelco, Bellefonte, PA 16823-0048 USA.

ARGENTINA · Sigma-Aldrich de Argentina, S.A. · Buenos Aires 1119 AUSTRALIA · Sigma-Aldrich Pty. Ltd. · Castle Hill NSW 2154 AUSTRIA · Sigma-Aldrich Handels GmbH · A-1110 Wien
 BELGIUM · Sigma-Aldrich N.V./S.A. · B-2880 Bornem BRAZIL · Sigma-Aldrich Quimica Brasil Ltda. · 01239-010 São Paulo, SP CANADA · Sigma-Aldrich Canada, Ltd. · 2149 Winston Park Dr., Oakville, ON L6H 6J8
 CZECH REPUBLIC · Sigma-Aldrich s.r.o. · 186 00 Praha 8 DENMARK · Sigma-Aldrich Denmark A/S · DK-2665 Vallensbaek Strand FINLAND · Sigma-Aldrich Finland/YA-Kemia Oy · FIN-00700 Helsinki
 FRANCE · Sigma-Aldrich Chimie · 38297 Saint-Quentin-Fallavier Cedex GERMANY · Sigma-Aldrich Chemie GmbH · D-82041 Deisenhofen GREECE · Sigma-Aldrich (o.m.) Ltd. · Ilioupoli 16346, Athens
 HUNGARY · Sigma-Aldrich Kft. · H-1067 Budapest INDIA · Sigma-Aldrich Co. · Bangalore 560 048 IRELAND · Sigma-Aldrich Ireland Ltd. · Dublin 24 ISRAEL · Sigma Israel Chemicals Ltd. · Rehovot 76100
 ITALY · Sigma-Aldrich s.r.l. · 20151 Milano JAPAN · Sigma-Aldrich Japan K.K. · Chuo-ku, Tokyo 103 KOREA · Sigma-Aldrich Korea · Seoul MALAYSIA · Sigma-Aldrich (M) Sdn. Bhd. · Selangor
 MEXICO · Sigma-Aldrich Quimica S.A. de C.V. · 50200 Toluca NETHERLANDS · Sigma-Aldrich Chemie BV · 3330 AA Zwijndrecht NORWAY · Sigma-Aldrich Norway · Torshov · N-0401 Oslo
 POLAND · Sigma-Aldrich Sp. z o.o. · 61-663 Poznań PORTUGAL · Sigma-Aldrich Quimica, S.A. · Sintra 2710 RUSSIA · Sigma-Aldrich Russia · Moscow 103062 SINGAPORE · Sigma-Aldrich Pte. Ltd.
 SOUTH AFRICA · Sigma-Aldrich (pty) Ltd. · Jet Park 1459 SPAIN · Sigma-Aldrich Quimica, S.A. · 28100 Alcobendas, Madrid SWEDEN · Sigma-Aldrich Sweden AB · 135 70 Stockholm
 SWITZERLAND · Supelco · CH-9471 Buchs UNITED KINGDOM · Sigma-Aldrich Company Ltd. · Poole, Dorset BH12 4QH
 UNITED STATES · Supelco · Supelco Park · Bellefonte, PA 16823-0048 · Phone 800-247-6628 or 814-359-3441 · Fax 800-447-3044 or 814-359-3044 · email: supelco@sial.com

H

Supelco is a member of the Sigma-Aldrich family. Supelco products are sold through Sigma-Aldrich, Inc. Sigma-Aldrich warrants that its products conform to the information contained in this and other Sigma-Aldrich publications. Purchaser must determine the suitability of the product for a particular use. Additional terms and conditions may apply. Please see the reverse side of the invoice or packing slip.

BKH