

## Analyzing Citrus Oil Using SPB™-5 and SPB-Octyl Capillary GC Columns

Using a single-injection dual-column system provides advantages for analysts studying complex essential citrus oils. Serving as confirmational phases, the SPB-5 and SPB-Octyl capillary columns yield unique fingerprint patterns, allowing for easier identification and quantitation of a number of key compounds.

### Key Words:

- Lime oil • lemon oil • capillary gas chromatography

Flavor and fragrance analyses are challenging to chromatographers because of the complexity of the various samples. These samples are comprised of a wide variety of chemical compounds, including terpenes, ketones, aldehydes, alcohols, esters, and hydrocarbons. Capillary gas chromatography provides characterizational fingerprinting of the essential oils and monitoring of samples for adulteration.

Distilled lime oil and cold-pressed lemon oil, important samples in the flavoring industry, are routinely characterized and evaluated for possible adulteration. Distilled lime oil, a by-product of lime juice processing, is recovered by distilling the acid liquors from the crushing of the lime fruit. Cold-pressed lemon oil is obtained by mechanical expression of the oil from the peel of the fresh fruit without using heat. The oil and juice from the fruit are separated during processing to yield the lemon oil.

A number of columns have been examined by flavor chemists for analyzing citrus oils (1). Carbowax® 20M-type columns were once widely used. However, these columns failed to perform a number of key separations. Many analysts switched to using nonpolar phases in the early 1980s. Nonpolar SPB-5 (5% diphenyl/95% dimethylpolysiloxane) and SPB-1 (100% dimethylpolysiloxane) capillary columns traditionally have been used to analyze citrus essential oils. Both columns provide excellent resolution of the citrus oil components, and are used routinely in quality control analyses.

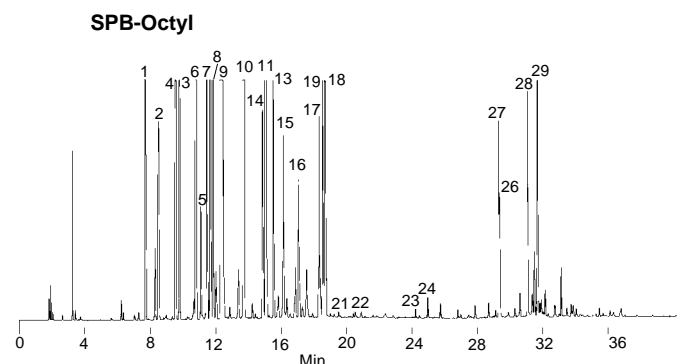
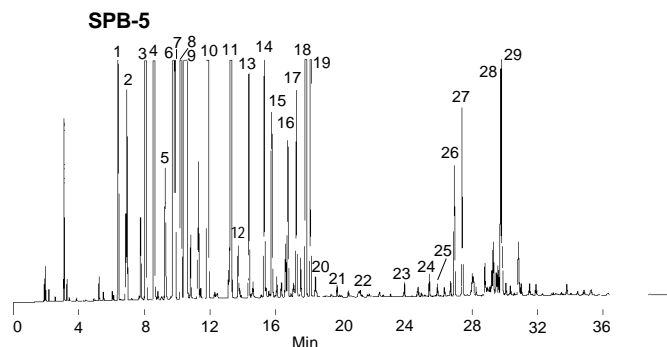
The SPB-Octyl capillary column, a very nonpolar bonded phase, provides unique resolution of citrus oils not possible on traditional nonpolar columns such as SPB-1 and SPB-5. The SPB-Octyl column is a 50% octyl/50% methyl polysiloxane phase whose polarity is lower than that of traditional nonpolar phases, and approaches that of the most nonpolar phase, squalane. The unique polarity of the SPB-Octyl phase has been shown to benefit analysts in the petrochemical and environmental fields (2).

We used an SPB-5 column and an SPB-Octyl column (both 30m x 0.25mm ID, 0.25µm film) in the analysis of citrus oils.

Figure A. Distilled Lime Oil

Column: 30m x 0.25mm ID, 0.25µm film  
 Cat. Nos.: 24034 (SPB-5)  
 24218-U (SPB-Octyl)  
 Oven: 75°C (hold 8 min) to 200°C at 4°C/min (hold 5 min)  
 Carrier: helium, 25cm/sec, set at 110°C, splitter vent flow 90cc/min  
 Det.: FID, 260°C  
 Inj.: 250°C, split 100:1

- |                   |                       |                         |
|-------------------|-----------------------|-------------------------|
| 1. α-Pinene       | 11. Terpinolene       | 21. Neral               |
| 2. Camphene       | 12. Linalool          | 22. Geranial            |
| 3. β-Pinene       | 13. α-Fenchyl alcohol | 23. Neral acetate       |
| 4. Myrcene        | 14. Terpinen-1-ol     | 24. Geranyl acetate     |
| 5. α-Phellandrene | 15. β-Terpineol       | 25. Dodecanal           |
| 6. 1,4-Cineole    | 16. Borneol           | 26. β-Caryophyllene     |
| 7. α-Terpinene    | 17. Terpinen-4-ol     | 27. trans-α-Bergamotene |
| 8. p-Cymene       | 18. α-Terpineol       | 28. trans-α-Farnesene   |
| 9. d-Limonene     | 19. γ-Terpineol       | 29. β-Bisabolene        |
| 10. γ-Terpinene   | 20. Decanal           |                         |



795-0529, 0530

Both columns were installed into a single injection capillary split port using a two-hole ferrule. Each column was installed in its own FID detector. Neat injections of the two essential oils were made into the injection port, and the sample was split appropriately onto each column. Since the dimensions of the two columns were identical, both columns received equal sample amounts.

An examination of the fingerprint pattern for distilled lime oil (Figure A) reveals differences throughout the profiles. A shift in the elution pattern of two major quantitative components of lime oil —  $\gamma$ -terpineol and  $\alpha$ -terpineol — is observed. Note also the reversal in elution of two other pairs —  $\beta$ -pinene and myrcene, and 1,4-cineole and  $\alpha$ -phellandrene. The SPB-Octyl column resolved a large unknown compound after p-cymene that was not observed using the SPB-5 column. Additionally, the SPB-Octyl column provided a better separation of trans- $\alpha$ -farnesene from  $\beta$ -bisabolene.

The major quantitative components of cold-pressed lemon oil —

limonene,  $\alpha$ -pinene, and  $\gamma$ -terpinene — were well resolved on both columns (Figure B). Similar elution shifts of the common components in lemon and lime oil are demonstrated in this figure. The fingerprint patterns for both columns show a number of differences which add to the complementary nature of the single-injection dual-column analysis.

Both the SPB-Octyl column and the SPB-5 column are useful for the analysis of citrus oils. Each column gives a characteristic fingerprint profile for the oils and provides improved resolution over the other column for a number of key compounds. This allows for easier identification and quantitation of complex essential oil samples.

### Ordering Information:

#### Capillary Columns, 30m x 0.25mm ID, 0.25 $\mu$ m film

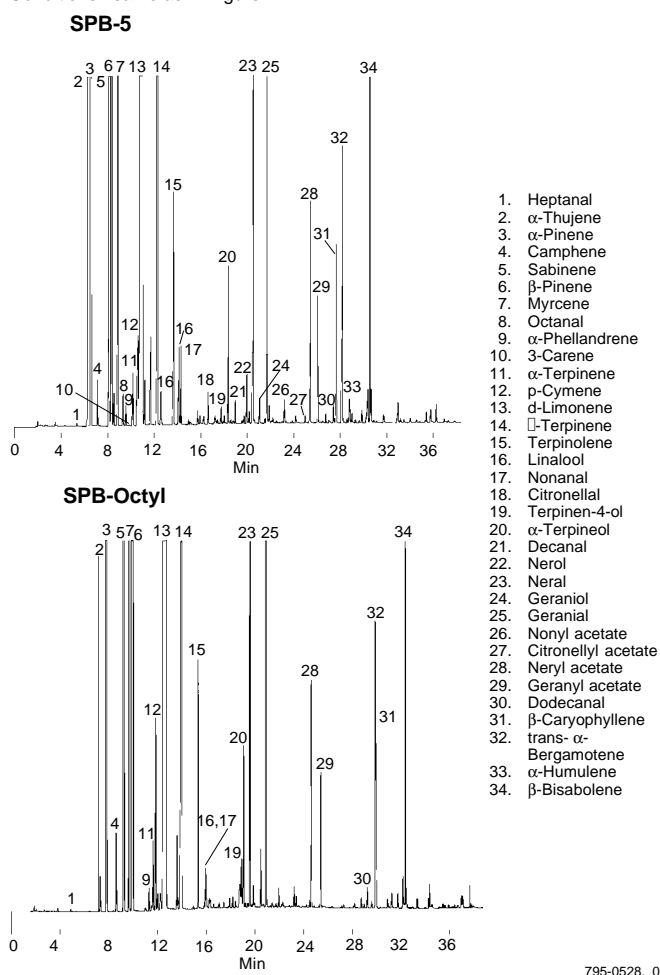
SPB-5 24034  
SPB-Octyl 24218-U

#### Supeltex™ M-2A Ferrules, 2-hole, 0.4mm ID

Pk. of 5 22467

**Figure B. Cold-Pressed Lemon Oil**

Conditions: same as in Figure A.



#### References

1. The Supelco Reporter, Vol. 2, No. 5, 1983.
2. The Supelco Reporter, Vol. 14, No. 1, 1995.

#### Acknowledgement

We are grateful to Mr. Bill Faas of the A.M. Todd Company for providing samples and assisting with peak identification.

#### Trademarks

Carbowax — Union Carbide Corp.  
SPB, Supeltex — Supelco, Inc.

Fused silica columns manufactured under HP US Pat. No. 4,293,415.

Contact our Technical Service Department  
(phone 800-359-3041 or 814-359-3041, FAX 814-359-5468)  
for expert answers to your questions.

Note 79

For more information, or current prices, contact your nearest Supelco subsidiary listed below. To obtain further contact information, visit our website ([www.sigma-aldrich.com](http://www.sigma-aldrich.com)), see the Supelco catalog, or contact Supelco, Bellefonte, PA 16823-0048 USA.

ARGENTINA · Sigma-Aldrich de Argentina, S.A. · Buenos Aires 1119 AUSTRALIA · Sigma-Aldrich Pty. Ltd. · Castle Hill NSW 2154 AUSTRIA · Sigma-Aldrich Handels GmbH · A-1110 Wien  
BELGIUM · Sigma-Aldrich N.V./S.A. · B-2880 Bornem BRAZIL · Sigma-Aldrich Quimica Brasil Ltda. · 01239-010 São Paulo, SP CANADA · Sigma-Aldrich Canada, Ltd. · 2149 Winston Park Dr., Oakville, ON L6H 6J8  
CZECH REPUBLIC · Sigma-Aldrich s.r.l. · 186 00 Praha 8 DENMARK · Sigma-Aldrich Denmark A/S · DK-2665 Vallensbaek Strand FINLAND · Sigma-Aldrich Finland/YA-Kemia Oy · FIN-00700 Helsinki  
FRANCE · Sigma-Aldrich Chimie · 38297 Saint-Quentin-Fallavier Cedex GERMANY · Sigma-Aldrich Chemie GmbH · D-82041 Deisenhofen GREECE · Sigma-Aldrich (o.m.) Ltd. · Ilioupoli 16346, Athens  
HUNGARY · Sigma-Aldrich Kft. · H-1067 Budapest INDIA · Sigma-Aldrich Co. · Bangalore 560 048 IRELAND · Sigma-Aldrich Ireland Ltd. · Dublin 24 ISRAEL · Sigma Israel Chemicals Ltd. · Rehovot 76100  
ITALY · Sigma-Aldrich s.r.l. · 20151 Milano JAPAN · Sigma-Aldrich Japan K.K. · Chuo-ku, Tokyo 103 KOREA · Sigma-Aldrich Korea · Seoul MALAYSIA · Sigma-Aldrich (M) Sdn. Bhd. · Selangor  
MEXICO · Sigma-Aldrich Quimica S.A. de C.V. · 50200 Toluca NETHERLANDS · Sigma-Aldrich Chemie BV · 3330 AA Zwijndrecht NORWAY · Sigma-Aldrich Norway · Torshov · N-0401 Oslo  
POLAND · Sigma-Aldrich Sp. z o.o. · 61-663 Poznań PORTUGAL · Sigma-Aldrich Quimica, S.A. · Sintra 2710 RUSSIA · Sigma-Aldrich Russia · Moscow 103062 SINGAPORE · Sigma-Aldrich Pte. Ltd.  
SOUTH AFRICA · Sigma-Aldrich (pty) Ltd. · Jet Park 1459 SPAIN · Sigma-Aldrich Quimica, S.A. · 28100 Alcobendas, Madrid SWEDEN · Sigma-Aldrich Sweden AB · 135 70 Stockholm  
SWITZERLAND · Supelco · CH-9471 Buchs UNITED KINGDOM · Sigma-Aldrich Company Ltd. · Poole, Dorset BH12 4QH  
UNITED STATES · Supelco · Supelco Park · Bellefonte, PA 16823-0048 · Phone 800-247-6628 or 814-359-3441 · Fax 800-447-3044 or 814-359-3044 · email: [supelco@sial.com](mailto:supelco@sial.com)

H

Supelco is a member of the Sigma-Aldrich family. Supelco products are sold through Sigma-Aldrich, Inc. Sigma-Aldrich warrants that its products conform to the information contained in this and other Sigma-Aldrich publications. Purchaser must determine the suitability of the product for a particular use. Additional terms and conditions may apply. Please see the reverse side of the invoice or packing slip.