

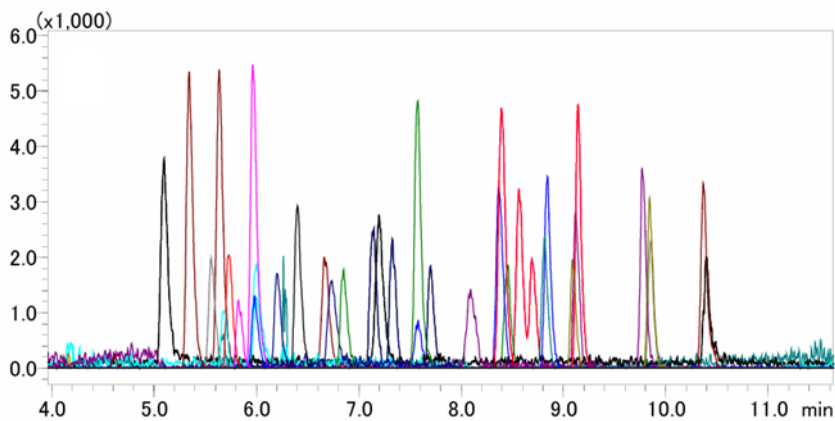
CoreFocus
Report
No.440

LC-MS Reversed-phase Shim-pack™ Series

Shim-pack Scepter™ C18-120 [Metal free column]

Analysis of Veterinary Drugs

Keywords: non-target analysis, antibacterial drugs, antimicrobial drugs



Ciprofloxacin	Nalidixic Acid	Sarafloxacin	Sulfadoxine	Sulfaquinolaxine
Danofloxacin	Norfloxacin	Sulfabenzamide	Sulfaethoxypyridazine	Sulfathiazole
Diaveridine	Ofloxacin	Sulfabromomethazine Na	Sulfamerazine	Sulfatroxazole
Difloxacin	Orbifloxacin	Sulfacetamide	Sulfamethoxazole	Sulfisomidine
Enrofloxacin	Ormetoprim	Sulfachlorpyridazine	Sulfamethoxypridazine	Sulfisoxazole
lumequine	OxolinicAcid	Sulfadiazine	Sulfametoxydiazine	Sulfisozole sodium
Marbofloxacin	Piromidicacid	Sulfadimethoxine	Sulfamonomethoxine	Trimethoprim
Miloxacin	Pyrimethamine	Sulfadimidine	Sulfapyridine	

System	: Nexera™ X3
Column	: Shim-pack Scepter C18-120 [Metal free column] (150 mm L x 2.1 mm I.D., 3 μm), P/N : 227-31073-03
Mobile phase	: A) 0.1 % formic acid - Water B) 0.1 % formic acid - Acetonitrile
Time Program	: B.Conc. 1 % (0 min)→15 % (1 min)→40 % (6 min)→ 100 % (10-15 min) - 1 % (15.01-18 min)
Flow rate	: 0.2 mL/min
Column temp.	: 40 °C
Injection vol.	: 2 μL (Co-injection 10 μL Water)

System	: LCMS-9030
TOF-MS	: m/z 100-1000
Nebulizing gas flow	: 3.0 L/min
Drying gas flow	: 10.0 L/min
Heating gas flow	: 10.0 L/min
DL temp.	: 250 °C
Block heater temp.	: 400 °C
Interface temp.	: 250 °C

Source : Application News an_01-00461 ([JP](#), [ENG](#))

CoreFocus, Shim-pack, Shim-pack Scepter and Nexera are trademarks of Shimadzu Corporation or its affiliated companies in Japan and/or other countries.

Shimadzu Corporation
www.shimadzu.com/an/

For Research Use Only. Not for use in diagnostic procedures.

This publication may contain references to products that are not available in your country. Please contact us to check the availability of these products in your country.

The content of this publication shall not be reproduced, altered or sold for any commercial purpose without the written approval of Shimadzu.

Company names, products/service names and logos used in this publication are trademarks and trade names of Shimadzu Corporation, its subsidiaries or its affiliates, whether or not they are used with trademark symbol "TM" or "®". Third-party trademarks and trade names may be used in this publication to refer to either the entities or their products/services, whether or not they are used with trademark symbol "TM" or "®". Shimadzu disclaims any proprietary interest in trademarks and trade names other than its own.

The information contained herein is provided to you "as is" without warranty of any kind including without limitation warranties as to its accuracy or completeness. Shimadzu does not assume any responsibility or liability for any damage, whether direct or indirect, relating to the use of this publication. This publication is based upon the information available to Shimadzu on or before the date of publication, and subject to change without notice.