

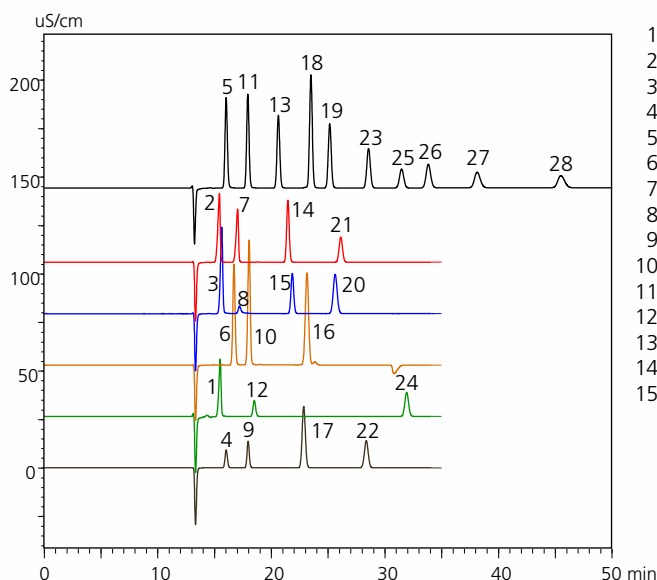
**CoreFocus**  
**Report**  
**No.200**

LC Ion-exclusion Shim-pack Series

**Shim-pack™ SCR-102H**

**Analysis of Organic Acids**

**Keywords: carboxylic acids**



- |                      |                                     |
|----------------------|-------------------------------------|
| 1. Phosphoric acid   | 16. Fumaric acid                    |
| 2. Maleic acid       | 17. Glutaric acid                   |
| 3. Ketoglutaric acid | 18. Formic acid                     |
| 4. Glucuronic acid   | 19. Acetic acid                     |
| 5. Citric acid       | 20. Adipic acid                     |
| 6. Tartaric acid     | 21. Levulinic acid                  |
| 7. Pyruvic acid      | 22. Pyroglutamic acid               |
| 8. Gluconic acid     | 23. Propionic acid                  |
| 9. Glyoxylic acid    | 24. Carbonic acid                   |
| 10. Malonic acid     | 25. Isobutyric acid                 |
| 11. Malic acid       | 26. Butyric acid                    |
| 12. Quinic acid      | 27. Isovaleric acid                 |
| 13. Succinic acid    | 28. Valeric acid<br>(500 mg/L each) |
| 14. Glycolic acid    |                                     |
| 15. Lactic acid      |                                     |

System	: Nexera™ Organic Acid system
Column	: Shim-pack SCR-102H (300 mm x 8.0 mm I.D.), P/N : 228-17893-91, x 2
	: Guard column SCR-102H (50 mm x 6.0 mm I.D.), P/N : 228-17924-91
Mobile phase	: 5 mmol/L <i>p</i> -Toluensulfonic acid
	Reagents Kit for Organic Acid Analysis System, P/N : 228-61465-91
Flow rate	: 0.8 mL/min
pH bufferingsolution	: 5 mmol/L <i>p</i> -Toluensulfonic acid, 20 mmol/L Bis-Tris, 0.1 mmol/L EDTA
	(Reagents Kit for Organic Acid Analysis System, P/N : 228-61465-91)
Flow rate	: 0.8 mL/min
Mixer	: Organic Acid Analysis Plumbing Kit (MR), P/N : 228-77532-41
Temperature	: 45 °C
Injection vol.	: 20 µL
Vial	: LabTotal™ Vial for LC/LCMS, P/N : 228-15652-92
Detection	: Conductivity

Source : Application News 01-00171 (JP)

CoreFocus, Shim-pack, Nexera and LabTotal are trademarks of Shimadzu Corporation or its affiliated companies in Japan and/or other countries.

**Shimadzu Corporation**  
[www.shimadzu.com/an/](http://www.shimadzu.com/an/)

**For Research Use Only. Not for use in diagnostic procedures.**

This publication may contain references to products that are not available in your country. Please contact us to check the availability of these products in your country.

The content of this publication shall not be reproduced, altered or sold for any commercial purpose without the written approval of Shimadzu.

Company names, products/service names and logos used in this publication are trademarks and trade names of Shimadzu Corporation, its subsidiaries or its affiliates, whether or not they are used with trademark symbol "TM" or "®".

Third-party trademarks and trade names may be used in this publication to refer to either the entities or their products/services, whether or not they are used with trademark symbol "TM" or "®".

Shimadzu disclaims any proprietary interest in trademarks and trade names other than its own.

The information contained herein is provided to you "as is" without warranty of any kind including without limitation warranties as to its accuracy or completeness. Shimadzu does not assume any responsibility or liability for any damage, whether direct or indirect, relating to the use of this publication. This publication is based upon the information available to Shimadzu on or before the date of publication, and subject to change without notice.