

Automated Extraction of 11-nor-9-Carboxy- Δ^9 -THC from Hydrolyzed Urine Using ISOLUTE[®] SLE+ Prior to GC/MS Analysis

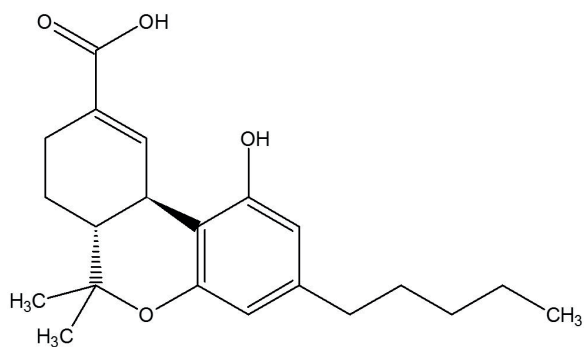


Figure 1. Structure of 11-nor-9-carboxy- Δ^9 -THC.

Introduction

This application note describes the fully automated extraction of carboxy-THC from urine, following base hydrolysis prior to GC/MS analysis. The method was automated using Biotage[®] Extrahera[™], configured for use with ISOLUTE SLE+ columns.

This application note describes an effective and efficient ISOLUTE SLE+ protocol optimized for extraction of 1 mL of pre-hydrolyzed urine. The simple sample preparation procedure delivers clean extracts and analyte recoveries greater than 80% with RSDs lower than 10% for carboxy-THC and its deuterated internal standard. Using Biotage Extrahera, 24 samples are extracted in approximately 35 minutes. Limit of quantitation is below the SAMHSA/EWDTS confirmation cut off of 15 ng/mL for workplace testing applications.

ISOLUTE[®] SLE+ Supported Liquid Extraction plates and columns offer an efficient alternative to traditional liquid-liquid extraction (LLE) for bioanalytical sample preparation, providing high analyte recoveries, no emulsion formation, and significantly reduced sample preparation.

Analytes

Carboxy-THC and carboxy-THC-D₉ as internal standard

Sample Preparation Procedure

Format

ISOLUTE[®] SLE+ 1 mL Sample Volume columns (Tables), part number 820-0140-CG.

Sample Pre-treatment

Apply 20 μ L of a 1 ng/ μ L aqueous internal standard solution to 1 mL of urine and allow to equilibrate for 1 hr at room temperature. Add 50 μ L sodium hydroxide (10N) to this urine sample and heat at 60 $^{\circ}$ C for 20 minutes. Allow to cool and add 60 μ L glacial acetic acid.

Sample Loading

Load 1 mL of the hydrolyzed sample onto the column and apply a pulse of vacuum or positive pressure (3–5 seconds) to initiate flow. Allow the sample to absorb for 5 minutes.

Analyte Extraction

Apply hexane/ethyl acetate (2.5 mL, 50/50, v/v) and allow to flow under gravity for 5 minutes. Apply a further aliquot of hexane/ethyl acetate (2.5 mL, 50/50, v/v) and allow to flow for another 5 minutes under gravity. Apply vacuum or positive pressure to pull through any remaining extraction solvent. (5–10 seconds).

Post Elution and Derivatization

Dry the extract in a stream of air or nitrogen using a Biotage[®] TurboVap[®] (1.2 L/min at 40 $^{\circ}$ C for 25 mins).

Reconstitute the extracts with 250 μ L ethyl acetate and vortex for 10 seconds before transferring to high recovery GC vials. Dry the extract in a stream of air or nitrogen using a TurboVap (1.2 L/min at 40 $^{\circ}$ C for 10 mins).

Upon dryness, reconstitute with 20 μ L ethyl acetate and 20 μ L BSTFA:TMCS 99:1 and vortex for 20 seconds. Place in a heating block set to 70 $^{\circ}$ C, for 25 minutes. Remove vial from the block and allow to cool.

GC Conditions

Instrument

Agilent 7890A with QuickSwap

Column

Restek Rxi-5ms, 30 m x 0.25 mm ID x 0.25 μ m

Carrier

Helium 1.2 mL/min (constant flow)

Inlet

280 °C, Splitless, purge flow: 50 mL/min at 1.0 min

Injection Volume

2 μ L

Wash Solvents

Methanol and ethyl acetate

Oven

Initial temperature 125 °C

Ramp 50 °C/min to 300 °C, hold for 2.5 minutes

Ramp 50 °C/min to 330 °C, hold for 1.4 minutes

Post Run

Backflush for 1.6 minutes (2 void volumes)

Transfer Line

280 °C

MS Conditions

Instrument

Agilent 5975C

Source

230 °C

Quadrupole

150 °C

MSD mode

SIM

SIM Parameters

Table 1. Ions acquired in the Selected Ion Monitoring (SIM) mode.

SIM Group	Analyte	Target (Quant) Ion	1st Qual Ion	2nd Qual Ion
1	THC-COOH-D ₉	380	479	
1	THC-COOH	371	488	473

Results

This optimized SLE+ protocol demonstrated analyte recoveries of 82% and 85% from urine for the carboxy-THC-D₉ and carboxy-THC respectively, as shown in Figure 2. RSDs were lower than 10% (n=7).

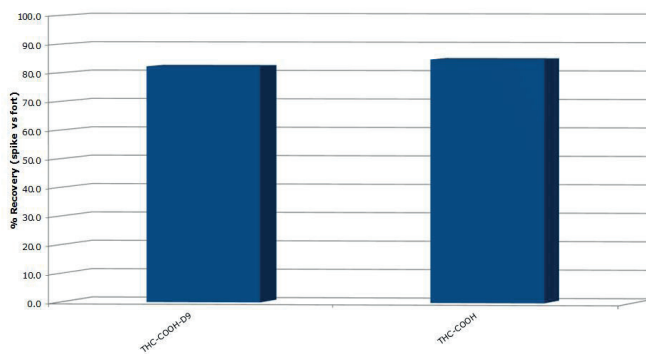


Figure 2. Analyte Recoveries.

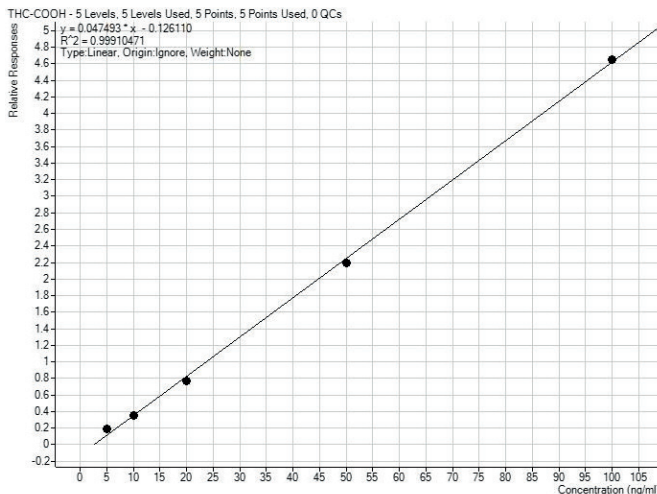


Figure 3. A calibration curve of carboxy-THC constructed following extractions using ISOLUTE SLE+ with the optimal protocol. Analyte concentrations shown here are 5, 10, 20, 50 and 100 ng/mL with r^2 values of greater than 0.999. The carboxy-D₉ deuterated internal standard concentrations is at 20 ng/mL.

The analyte signal allows an approximate inferred limit of quantitation of between 5 and 10 ng/mL.



Additional information

- » **Sodium Hydroxide 10N** is prepared with 40 g of pellets in 100 mL deionized water. Prepare this solution with extreme care. As an added precaution, place the beaker on ice prior to gradual pellet addition.
- » **Glacial Acetic Acid** was purchased from Sigma-Aldrich at $\geq 99.85\%$
- » The use of MTBE is an acceptable alternative to hexane/ethyl acetate (50/50, v/v)
- » For manual extraction protocols, ISOLUTE® SLE+ 1 mL Sample Volume columns are available in tabbed format (p/n 820-0140-C) and can be used as an alternative to the tabless version used in this Biotage® Extrahera™ automated protocol.

Ordering Information

Part Number	Description	Quantity
820-0140-CG	ISOLUTE® SLE+ 1 mL Sample Volume Column (Tabless)	30
414001	Biotage® Extrahera™	1
415041	Configuration Kit 24 Positions, Dual Flow	1
415000	TurboVap® LV Evaporator	1

EUROPE

Main Office: +46 18 565900
 Toll Free: +800 18 565710
 Fax: +46 18 591922
 Order Tel: +46 18 565710
 Order Fax: +46 18 565705
 order@biotage.com
 Support Tel: +46 18 56 59 11
 Support Fax: + 46 18 56 57 11
 eu-1-pointsupport@biotage.com

NORTH & LATIN AMERICA

Main Office: +1 704 654 4900
 Toll Free: +1 800 446 4752
 Fax: +1 704 654 4917
 Order Tel: +1 704 654 4900
 Order Fax: +1 434 296 8217
 ordermailbox@biotage.com
 Support Tel: +1 800 446 4752
 Outside US: +1 704 654 4900
 us-1-pointsupport@biotage.com

JAPAN

Tel: +81 3 5627 3123
 Fax: +81 3 5627 3121
 jp_order@biotage.com
 jp-1-pointsupport@biotage.com

CHINA

Tel: +86 21 68162810
 Fax: +86 21 68162829
 cn_order@biotage.com
 cn-1-pointsupport@biotage.com

KOREA

Tel: + 82 31 706 8500
 Fax: + 82 31 706 8510
 korea_info@biotage.com
 kr-1-pointsupport@biotage.com

Distributors in other regions are listed on www.biotage.com

Part Number: AN892

© 2018 Biotage. All rights reserved. No material may be reproduced or published without the written permission of Biotage. Information in this document is subject to change without notice and does not represent any commitment from Biotage. E&OE. A list of all trademarks owned by Biotage AB is available at www.biotage.com/legal. Other product and company names mentioned herein may be trademarks or registered trademarks and/or service marks of their respective owners, and are used only for explanation and to the owners' benefit, without intent to infringe. This application note is intended for research use only, not for diagnostic use.

