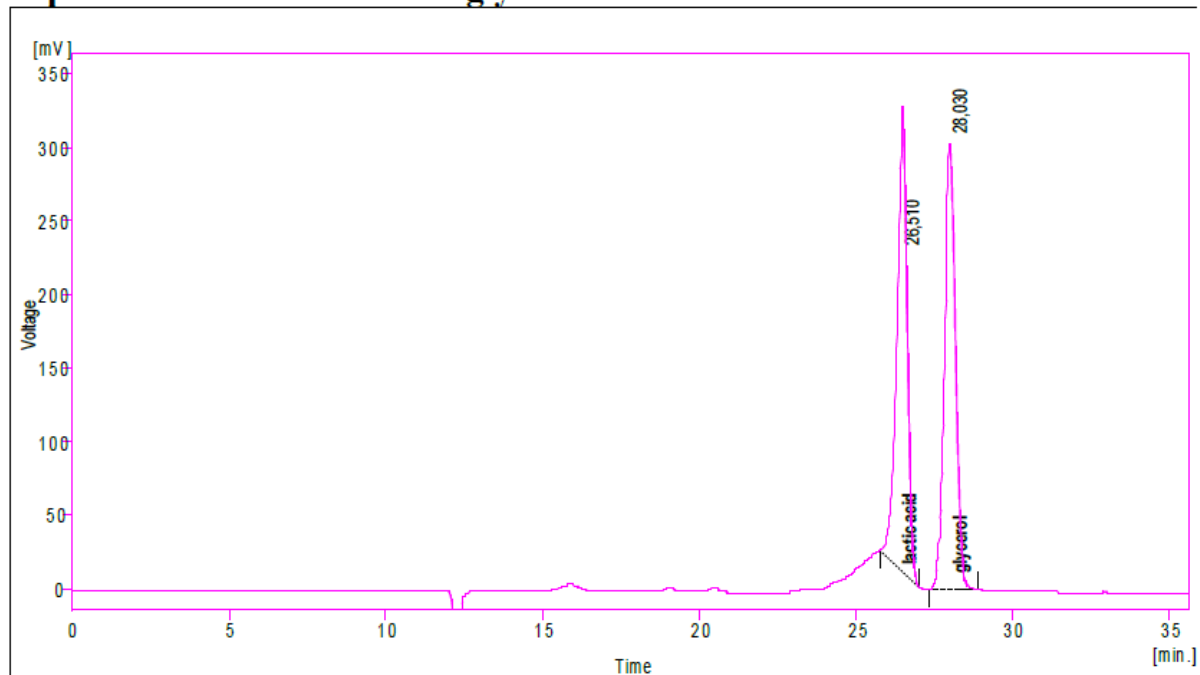




Steel column 250x8 mm
Polymer IEX H form

Separation of lactic acid and glycerol



Pump: DeltaChrom™ SDS 030
Injection: Rheodyne 7725i, 20 µl loop
Column: WATREX 250x8mm Polymer IEX H form 10 µm, and 6µm in series
Eluent: 1,5 mM sulfuric acid, 0,5 ml/min, pressure 7,3 MPa, temperature 75°C
Detection: Refractometric RI 101 Shodex

Watrex Praha, Ltd, Carolina Centrum, Drnovská 1112/60,
161 00 Praha 6, Czech Republic.
Phone + 420 226 203 500, E-mail: watrex@watrex.com , <http://www.watrex.cz>