

CLARITY 7.4

WHAT'S NEW

What is new in Clarity 7.4

- ✓ **GLP** – Improved logging to Audit Trail
- ✓ Calibration on **All Signals/Active Signal**
- ✓ **Agilent** Instrument Control (**ICF**) – changes
- ✓ Various improvements – see **Whatsnew**
- ✓ **New** and **updated** control modules

We continually work on maintaining **Clarity compliant ready** and thus introduced a more detailed logging to *Audit Trails*:

- ✓ **Closing a chromatogram** is recorded in the *Station Audit Trail*
- ✓ **Creating a new sequence** is recorded in the *Station Audit Trail*
- ✓ **Changes on the PDA method** are recorded in the *Method Audit Trail*
- ✓ Option **Ask for Reason of File Change** is now applicable in the **System Configuration**

New option to (re)calibrate on All Signals/on Active Signal has been implemented

Instrument 1 - Calibration 250X8HR1 <-- ESTD

File Edit Display Calibration View Window Help

Automatic Recalibration on All Signals

Calibration Summary Table (ESTD - 250X8HR1 - Signal 1)

Used	Compound Name	Reten. Time	Left Window	Right Window	Peak Type	Named Groups	Is ISTD	Use ISTD	Peak Color	LOD	LOQ	Response Base	Resp. Factor	Response	Amount	Resp. Fac.	Rec No.
1	oxalic	4,561	0,100 min	0,100 min	Ordnr		None			0,000	0,000	A	0,0000	3,6130	0,101	0,0280	1
2	citric	5,203	0,100 min	0,100 min	Ordnr		None			0,000	0,000	A	0,0000	36,2510	0,210	0,0058	1
3	tartaric	5,423	0,100 min	0,100 min	Ordnr		None			0,000	0,000	A	0,0000	98,5410	0,441	0,0045	1
4	glucose	6,053	0,100 min	0,100 min									0,0000	0,0000	0,600	0,0000	1
5	malic	6,303	0,100 min	0,100 min									0,0000	217,4548	1,003	0,0046	1
6	fructose	6,577	0,100 min	0,100 min									0,0000	0,0000	0,600	0,0000	1
7	succinic	8,177	0,100 min	0,100 min									0,0000	31,5600	0,239	0,0076	1
8	lactic	8,550	0,100 min	0,100 min									0,0000	51,3650	0,600	0,0117	1
9	glycerol	8,900	0,100 min	0,060 min									0,0000	0,0000	1,223	0,0000	1
10	acetic	10,337	0,100 min	0,100 min									0,0000	24,9850	0,202	0,0081	1
11	methanol	12,710	0,100 min	0,100 min									0,0000	0,0000	0,104	0,0000	1
12	ethanol	14,833	0,100 min	0,100 min									0,0000	0,0000	10,847	0,0000	1

Calibration Options (250X8HR1)

Calibration Description: IEX H form, 9 mM H2SO4, 0.5 ml/min

Display Mode: ESTD

Number of Signals: 2

Calibration Mode:

- Automatic
- Calibrate
- Manual
- Recalibrate

Apply on:

- On All Signals
- On Active Signal

Curve Check:

- Deviation
- Correlation

Units: Compound: g/l

Recalibration:

- Replace
- Average
- Weight

No. of Points: 10

Weighting Factor: 0,25

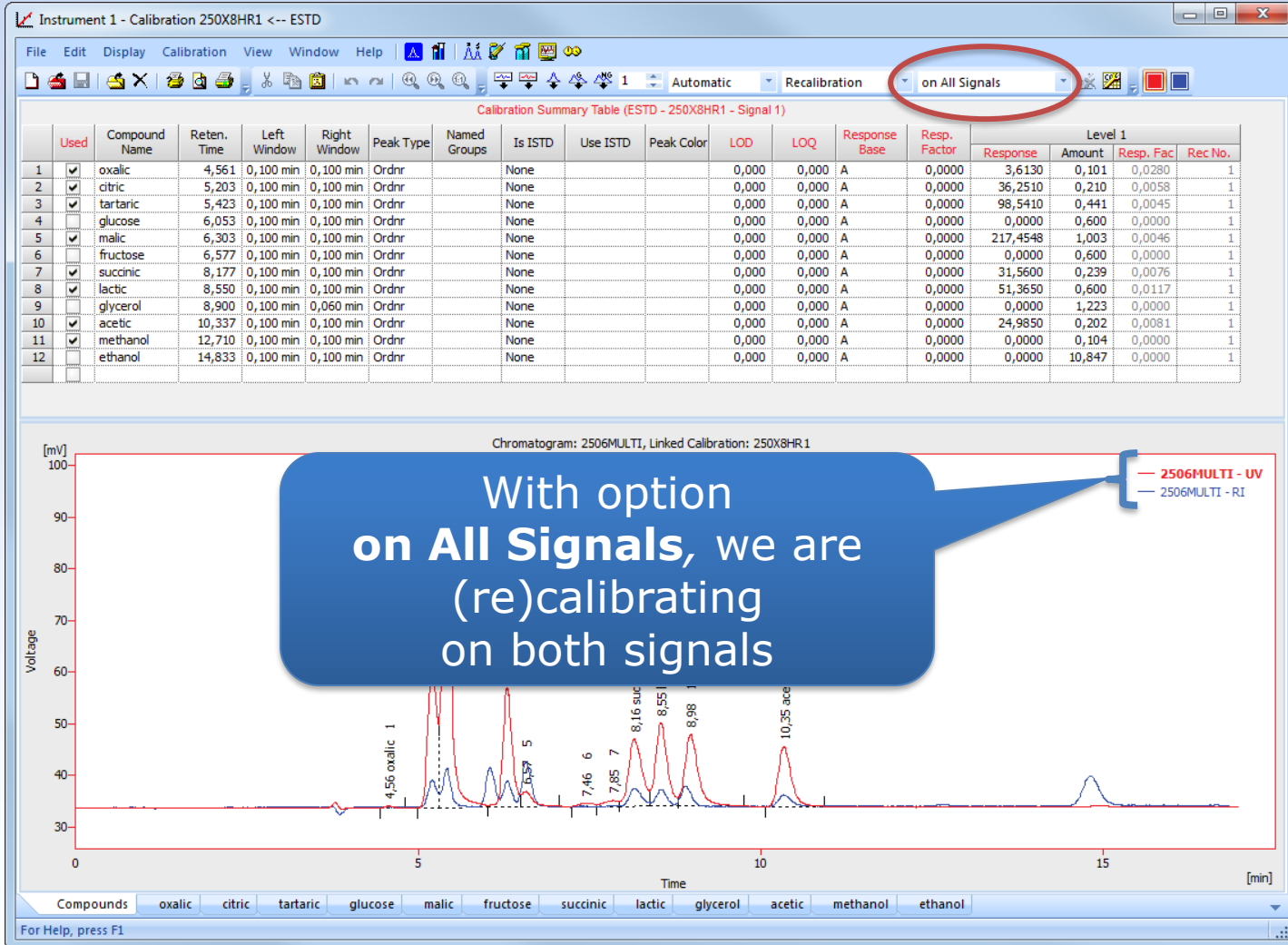
Search Criteria: 0 %

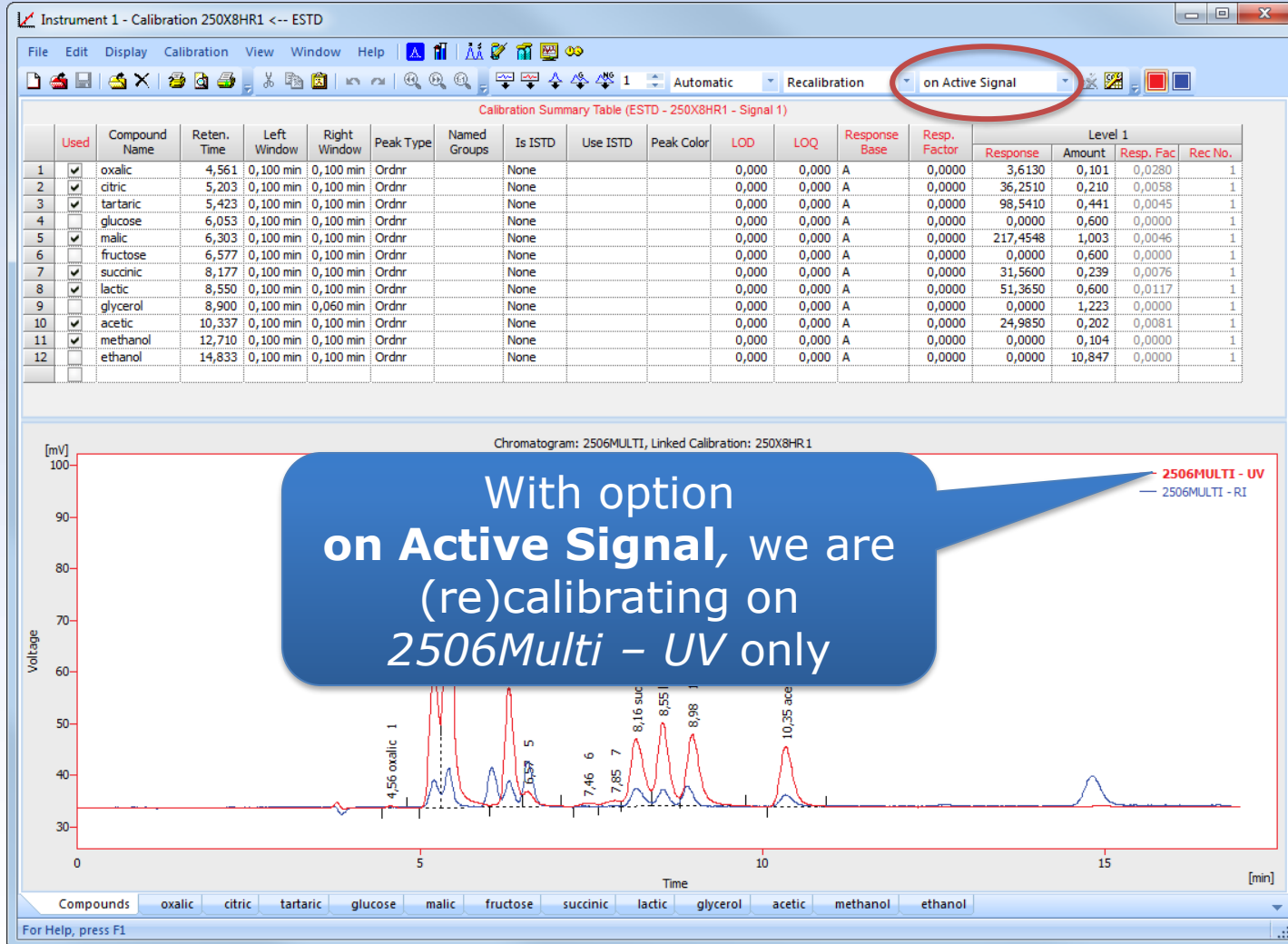
Enable Response Value Change
 Update Retention Time
 Default Injected Volume: 0 µL
 Retention Indexes use Log. Interpolation with Unretained Peak
 Response Factor as Response / Amount

OK Cancel Help

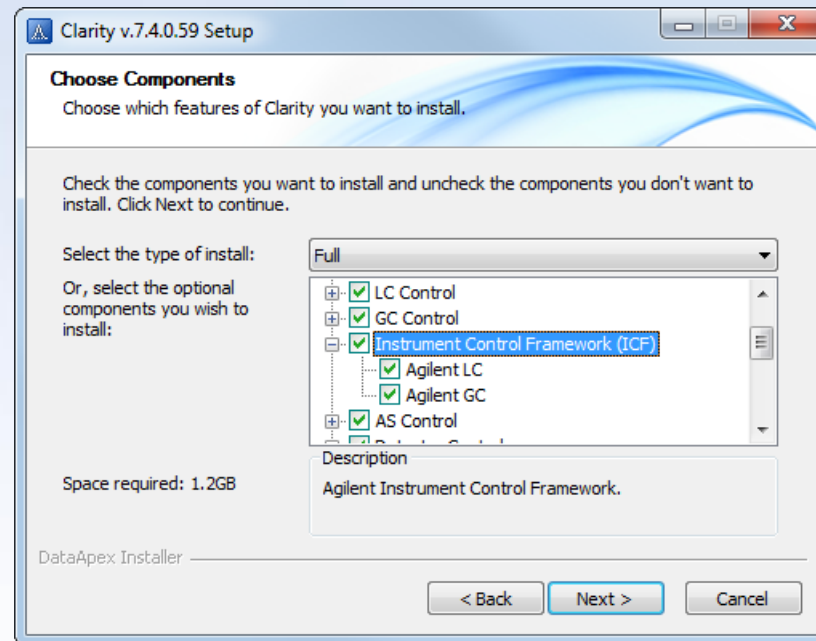
Compounds: oxalic citric tartaric glucose malic fructose succinic lactic glycerol acetic methanol ethanol

For Help, press F1





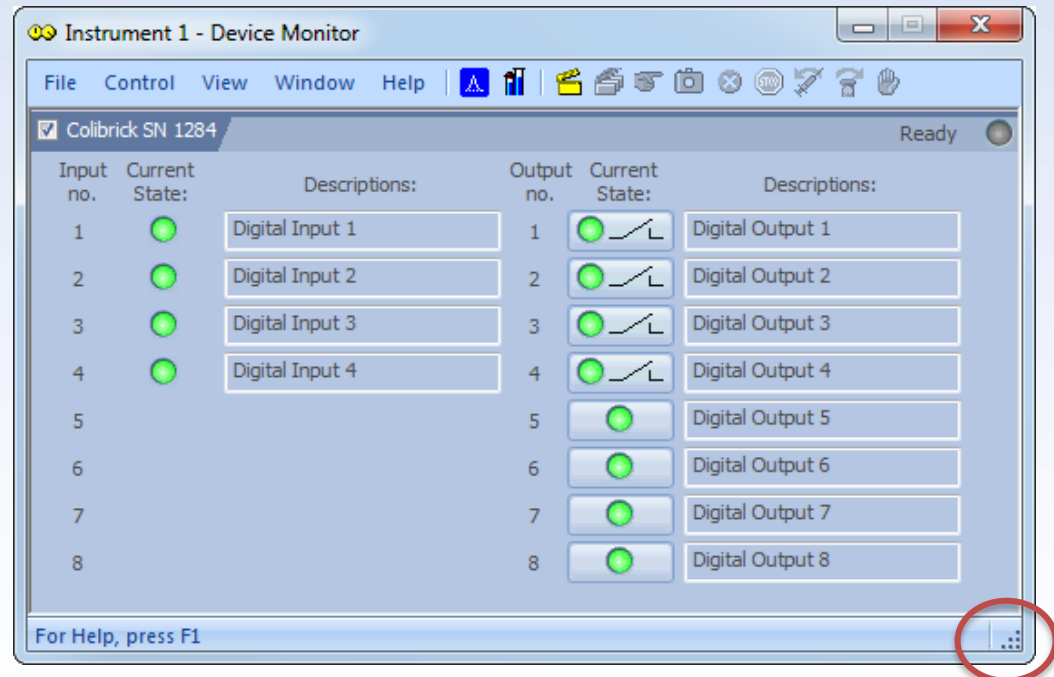
- ✓ Listing of **ICF** control modules in the installer has been **reorganized** – **ICF** has its own section



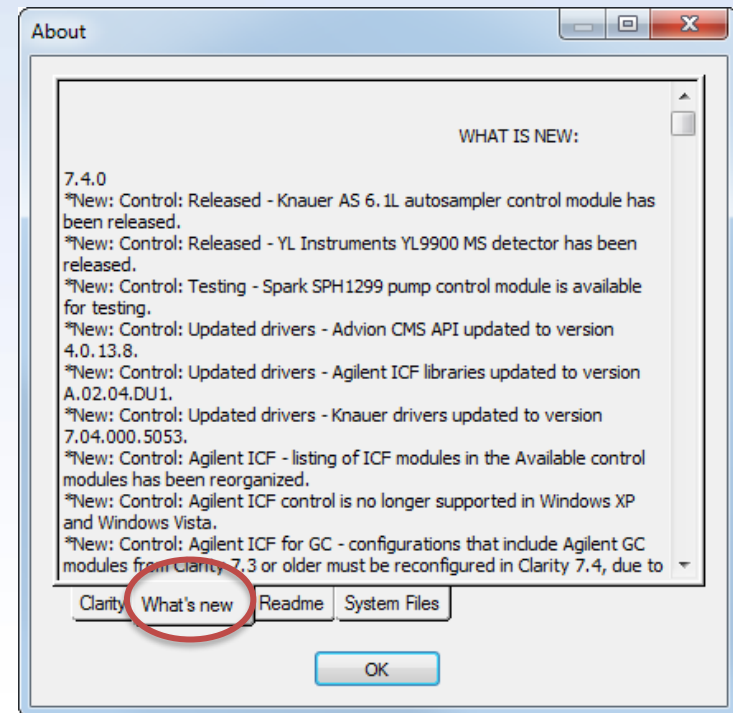
- ✓ **ICF can no longer** be installed on **Windows XP** nor **Windows Vista** – Agilent itself does not support them

Windows & ICF compatibility					
XP	Vista	7 SP1	8	8.1	10
✗	✗	✓	✗	✓	✓

- ✓ **Check** against invalid filenames and paths
- ✓ Renaming of fields in several extensions to **better suit the used terminology**
- ✓ *Graph Properties, Verify Signatures and Device Monitor* windows are all now **resizable**



- ✓ Added support for **Y-axis name** in the **import / export** of ASCII files
- ✓ **New variables** that can be used in the *Event Table* of the *Method Setup*
- ✓ For further information see *What's new* in the *About* dialog of your **Clarity**

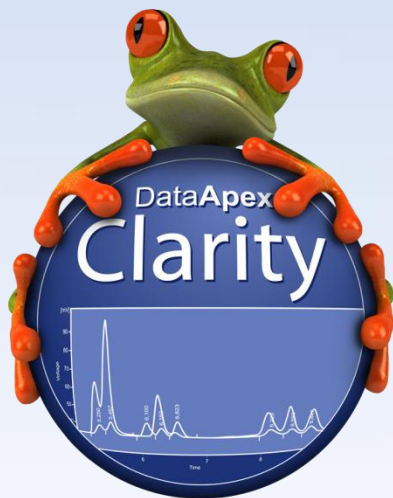


- ✓ **Spark** – SPH1299 pump
- ✓ **YL Instruments** – YL9900 MS detector
- ✓ **Knauer** – drivers for Fraction Collectors

... and many other control modules have been updated



Download **Clarity 7.4** directly from your station or from our website



More information about Clarity and DataApex at:

www.dataapex.com

For technical support contact us at:

support@dataapex.com

