

## GPC50/50 Plus Gel Permeation Chromatograph Software Revision# – Site Preparation Checklist

Thank you for purchasing an Agilent instrument. To get you started and to assure a successful and timely installation of your Agilent **software**, please refer to this specification or set of requirements.

Correct site preparation is the key first step in ensuring that your instruments and software systems operate reliably over an extended lifetime. This document is an **information guide and checklist** prepared for you that outlines the supplies, consumables, space and utility requirements for your equipment for your site.

### Customer Responsibilities

**Make sure your site meets the following prior specifications before the installation date. For details, see specific sections within this checklist, including:**

- The computing environment and the necessary space is made available
- The number & location of electrical outlets for your computer systems and peripherals are planned
- That your site meets the software, hardware and networking specifications below
- Locate your sales order information, software authorization codes and/or software licenses/certificates
- The necessary software media, disks etc are available including upgrade/update disks
- That a suitable backup solution is identified for your software
- Availability of a system/network administrator as needed to connect to your intranet
- Please consult Other Requirements section below for other product-specific information.
- Complete Final Check: Software Site Preparation Tool. Please visit the following Agilent website to download the Software Installation Site Preparation Tool.  
<http://www.chem.agilent.com/en-US/Support/Downloads/Utilities/SWSitePrepTool/Pages/Default.aspx>  
This easy-to-use tool verifies that your PC meets the necessary hardware and software pre-requisites before installing the Agilent software.

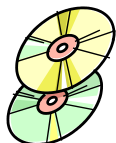
**If Agilent is delivering installation and familiarization services, users of the instrument should be present throughout these services; otherwise, they will miss important operational, maintenance and safety information.**

- Author to add specific customer activities or additional help, information, or guidance for the customer to follow prior to installation>.

### Important Customer Information

1. If you have questions or problems in providing anything described as a Customer Responsibilities above, please contact your local Agilent or partner support/service organization for assistance prior to delivery. In addition, Agilent and/or its partners reserve the right to reschedule the installation dependent upon the readiness of your laboratory.
2. Should your site not be ready for whatever reasons, please contact Agilent as soon as possible to re-arrange any services that have been purchased.
3. Other optional services such as additional training, operational qualification (OQ) and consultation for user-specific applications may also be provided at the time of installation when ordered with the system, but should be contracted separately.

**GPC50/50 Plus Gel Permeation Chromatograph  
Software Revision# - Site Preparation Checklist**



**Software Specifications for  
Workstations, Clients, and Servers**

**Special Notes:**

1. Upgrade system to the latest MS Windows Service Pack

Specification Description	Minimum	Recommended (if applicable)	Comments (if applicable)
Operating system type(s), versions	Microsoft Windows XP Pro.	Microsoft Windows XP Pro.	If Running with Windows 7, please ensure PC is configured to use XP Pro mode in Windows virtual PC mode (Please refer to other requirements section)
O/S .NET & other add-ons	N/A		
Language settings/compatibility	N/A		
Regional settings/compatibility	N/A		
Account settings/privileges	N/A		
Specific drivers	N/A		



**Computer Hardware Specifications for  
Workstations, Clients, and Servers**

**Special Notes**

1. Author to add special considerations or notes.

Specification Description	Minimum	Recommended (if applicable)	Comments (if applicable)
Processor type & speed	Pentium 4 operating at 2GHz or greater microprocessor	Pentium 4 operating at 2GHz or greater microprocessor	
Memory	256 Mb	512Mb or better	
Internal Storage/devices/media	N/A		
External Storage/devices/media	N/A		
Video devices	SVGA( 800 x 600) Resolution set to High Colour (16bit)		

**GPC50/50 Plus Gel Permeation Chromatograph  
Software Revision# - Site Preparation Checklist**

Audio devices	N/A		
Printing devices	N/A		
Pointing devices	Microsoft compatible mouse		
Additional devices/ports	Minimum 2 USB ports and an RS-232 serial communications port	Minimum 2 USB ports and an RS-232 serial communications port	



## Networking Specifications

### Special Notes

1. Author to add special considerations or notes.

Specification Description	Minimum	Recommended (if applicable)	Comments (if applicable)
Network type, bandwidth, speed, protocol etc	N/A		
Additional network or instrument devices/cards requirements	N/A		

## Important Customer Web Links

- For additional information about our solutions, please visit our web site at <http://www.chem.agilent.com/en-US/Pages/HomePage.aspx>
- Need to get information on your product?  
Literature Library - <http://www.agilent.com/chem/library>
- Need to know more?  
Customer Education - <http://www.agilent.com/chem/education>
- Need technical support, FAQs? - <http://www.agilent.com/chem/techsupp>
- Need supplies? - <http://www.agilent.com/chem/supplies>

Document part number: xxxxx-xxxxx

**GPC50/50 Plus Gel Permeation Chromatograph  
Software Revision# - Site Preparation Checklist**

**Do not include this section in the PDF version.**

Print only the checklist for the PDF. Do not include this page. This page is NOT intended for customer viewing. See the guidance instructions at the end of the template for more information.

## Document Control Logs

### Revision Log

Revision	Date	Reason For Update
[add revision # of doc here]	Date of issuance	Author to describe main features/changes made for this specific revision

### Approval Log

Revision	Approver	Title of Approver
[add rev#]	Add approver name here	Add approver's function or title here



### Other Requirements:

#### FTIR Software

Please note that when operating with the Agilent spectrometers it will be necessary to have the Varian Trigger program installed that is a supplement to ResPro but written by the group in the Craven Arms, UK. This supplementary package will enable the ResPro software to be automated and can therefore be used with an autosampler. The current release version (Build 29) is known to be compatible with ResPro version 5.1.x.

**GPC50/50 Plus Gel Permeation Chromatograph  
Software Revision# – Site Preparation Checklist**

When running Windows 7, please ensure PC is configured to use XP Pro mode in Windows virtual PC mode by following the configuration procedure below:

## Configuring the PL Instrument Control Software to Run On Windows 7

---

### **Summary**

The PL Instrument Control Software ( IN1-26500 ) can be used to control the GPC50 GPC system, the 1260 MDS / 390-LC Multi Detector Suite, the Varian 290-LC PIM (Pump Injection system) , the Varian 356-RI detector and PL GPC 120 & XT systems GPC systems.

This software is only compatible with Windows XP Pro and Windows 2000 and will not install or function correctly under Windows Vista or Windows 7.

This document describes how the this control software can be run on a Windows 7 system using the Windows XP Mode running on Windows 7.

### **What is Windows Virtual PC?**

Windows Virtual PC is Microsoft's virtualization technology for Windows 7. It is the runtime engine for Windows XP Mode and provides a virtual Windows environment for Windows 7. Using Windows Virtual PC, Windows XP Mode applications can be seen and accessed from a Windows 7 desktop

### **What is Windows XP Mode**

Windows XP Mode is a free addon for Windows 7 Professional and Windows 7 Ultimate and provides additional application compatibility. It allows you to install and run many of your applications for Windows XP directly from your Windows 7-based PC.

Comprehensive information about Windows Virtual PC and XP Mode is available from Microsoft at:

<http://www.microsoft.com/uk/windows/virtual-pc/default.aspx>

## GPC50/50 Plus Gel Permeation Chromatograph Software Revision# – Site Preparation Checklist



The screenshot shows the Microsoft Windows website for Windows XP Mode and Windows Virtual PC. The page includes a search bar, navigation links, and a main heading "Windows Virtual PC". Below the heading, there is a sub-heading "Introducing Windows XP Mode and Windows Virtual PC" and a paragraph describing the features. A prominent orange button says "Get Windows XP Mode and Windows Virtual PC now". To the right, there is a video player showing a Windows XP desktop. Below the main heading, there are two sections: "Key features" and "Get started with Windows XP Mode".

United Kingdom | Change | All Microsoft Sites

Windows

Search Microsoft.com | bing | Web

Home | Explore Windows | Products | Shop | Downloads | Help & How-to

Windows Virtual PC

Windows XP Mode and Windows Virtual PC Home | Features | Download | Get Started | Support and Videos

*Introducing*  
**Windows XP Mode and Windows Virtual PC**

Windows XP Mode and Windows Virtual PC, available on Windows 7 Professional and Windows 7 Ultimate, allow you to run multiple Windows environments, such as Windows XP Mode, from your Windows 7 desktop.

**Get Windows XP Mode and Windows Virtual PC now**

**Key features**

Microsoft has added several new features to Windows Virtual PC to make it easy to use and to help you run many older Windows XP applications in Windows 7.

- Easy setup of Windows XP Mode
- One click launch of Windows XP Mode applications
- USB support

**Get started with Windows XP Mode**

Find out how to best configure Windows Virtual PC to work for you.

- Running Windows XP Mode for your small business
- Customizing virtual machines for IT Pros
- Working with multiple operating systems for developers

## GPC50/50 Plus Gel Permeation Chromatograph Software Revision# – Site Preparation Checklist

### **System requirements for Windows Virtual PC**

1 GHz 32-bit / 64-bit processor required

Memory (RAM)

2GB memory or higher recommended

Recommended 15 GB hard disk space per virtual Windows environment

Supported host operating system:

Windows 7 Home Basic

Windows 7 Home Premium

Windows 7 Enterprise

Windows 7 Professional

Windows 7 Ultimate

**Note:** Windows XP Mode is only available in Windows 7 Enterprise, Windows 7 Professional, and Windows 7 Ultimate.

### **Support Documentation & Videos**

Comprehensive support information about Virtual PC & XP Mode is provide by Microsoft and is available from:  
<http://www.microsoft.com/uk/windows/virtual-pc/support/default.aspx>

### **Installation of Virtual PC and Windows XP Mode**

The required installations for your Windows configuration need to be download from Microsoft's web site available from <http://www.microsoft.com/windows/virtual-pc/download.aspx>.

To process is described in detail by Microsoft but in summary involces 3 steps.

Step 1: Download Windows XP Mode

Step 2: Download Windows Virtual PC

Step 3: Update Windows XP Mode

### **Opening Windows XP**

To install applications in Windows XP Mode, you start by selecting Windows XP Mode from the Windows 7 Start Menu.

**GPC50/50 Plus Gel Permeation Chromatograph  
Software Revision# - Site Preparation Checklist****Adding your application**

You can install applications in Windows XP Mode just as you normally would on a physical PC. For example, you can install applications via web, from storage devices, or from physical media such as CD/DVD.

**Running Windows XP Mode applications**

To run your application directly from the Windows 7 desktop, just go to your Start menu.



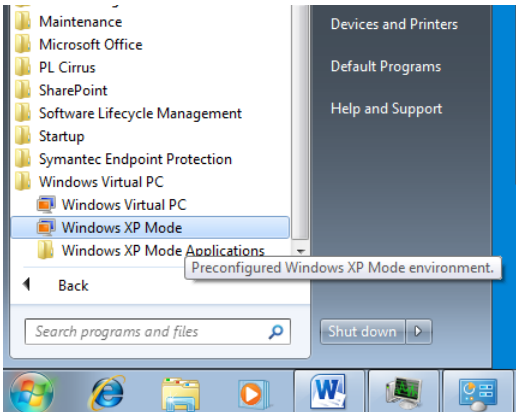
## GPC50/50 Plus Gel Permeation Chromatograph Software Revision# – Site Preparation Checklist

### Installing the PL Instrument Control and Cirrus

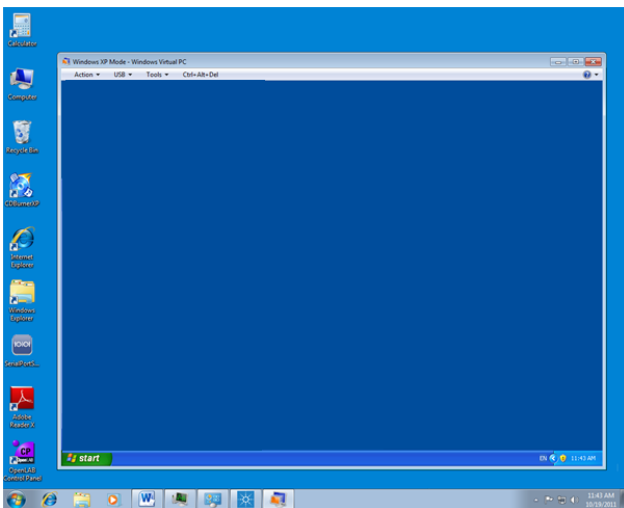


Do not connect the GPC 50 or MDS to your PC until all software & drivers are installed. Install and configure Windows XP mode & Virtual PC as described by Microsoft.

In Windows 7, click the Start button , click All Programs, click on Windows Virtual PC, and then click Windows XP Mode.



You will now get a session of Windows XP running in a new window.



Insert the PL Instrument Control software CD into your computer's CD/DVD

Run the program LAUNCH.EXE on the CD in the Windows XP session and follow the instructions to install the software and drivers as normal into the XP session not Windows 7.

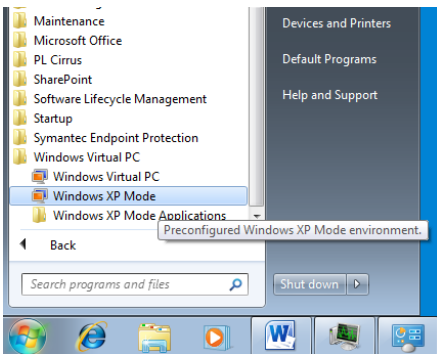
With XP Mode still running connect the GPC50 / MDS. The USB devices of the GPC50 / MDS will be detected and configured in the XP session.

If using Cirrus for data collection, it should be installed into the XP session using the same procedure described for the Control software above.

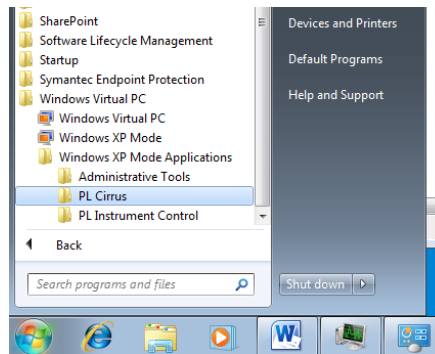
**GPC50/50 Plus Gel Permeation Chromatograph  
Software Revision# – Site Preparation Checklist**

## Running Instrument Control & Cirrus from within XP Mode.

To control the instrument and collect data into Cirrus, the programs have to be loaded from the XP mode session. The programs can be launched from within the XP session Start menu or It is possible to drill down to the start menu of the XP Machine directly from the Windows 7 start menu.



Use this menu option from Windows 7 start menu to launch XP Mode as a new window

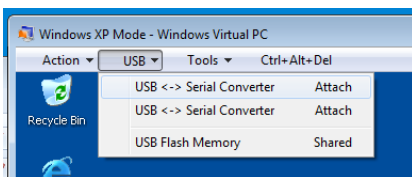


It is possible to drill down to the start menu of the XP Machine to launch a specific program directly from the Windows 7 start menu.

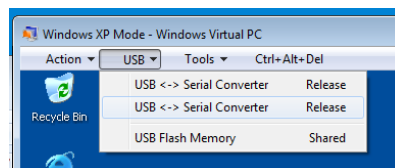
## Attaching the USB devices to the XP machine on startup of XP Mode

The USB devices of the GPC instrument need to be attached to the XP machine on startup of XP Mode. This is achieved by either:

Selecting the Attach options for the USB devices in the USB menu of the XP Mode window



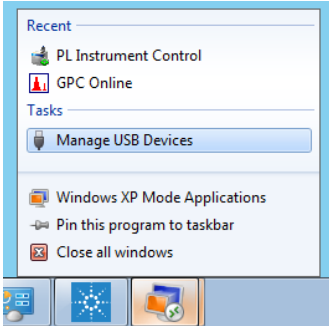
Screen shot showing the USB devices currently connected to Windows 7



Screen shot of the USB devices currently connected to the XP machine. They can be released back to the Windows 7 machine

## GPC50/50 Plus Gel Permeation Chromatograph Software Revision# - Site Preparation Checklist

Using the Right click menu on the minimised XP Machine



Option available by right clicking on the  
minimised XP Machine in Windows 7



Example screen shot of the dialog launched  
from the Manage USB devices menu.