

Installation Guide for Agilent 1120 Compact LC System

This Installation Guide will lead through the Installation Process of the Agilent 1120 Compact LC System, Hardware installation and Software setup, Installation Check, Caffeine Checkout *and Installation Finished Report?*.

Expected time for this procedure is about 2h.

IMPORTANT: PLEASE FOLLOW THIS GUIDE STEP BY STEP !!!

What do you need:

- HPLC Grade Water 0.5l
- Sample Vial

Please read site prep document to ensure all necessary preparations are fulfilled.
This is included in your shipment.

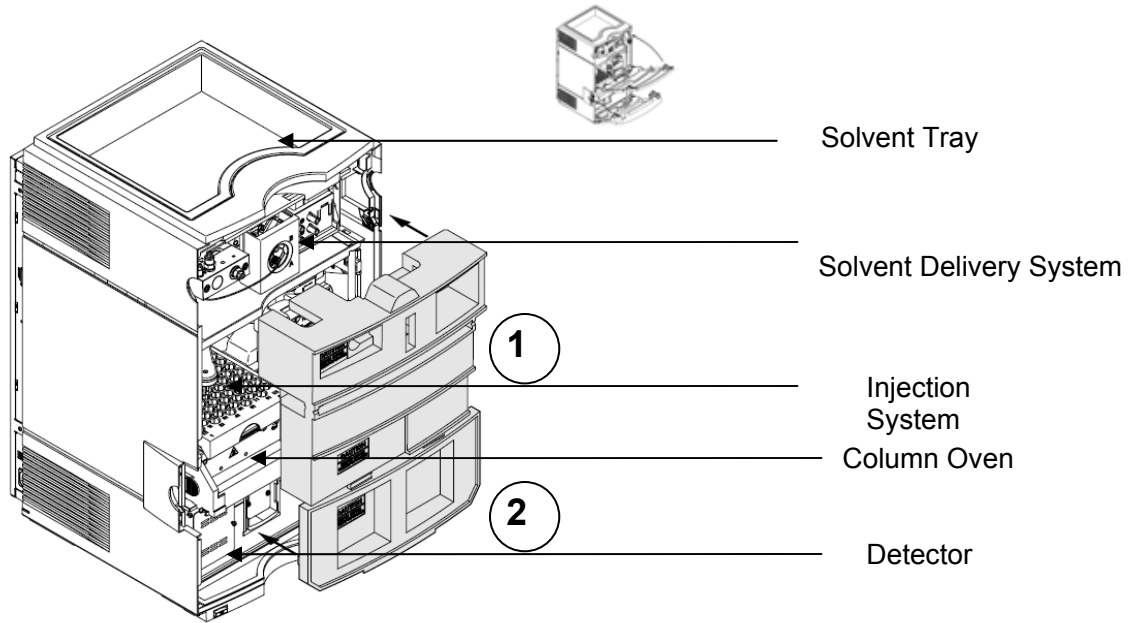
This Guide is divided into 7 steps:

- Step 1.): Unpacking and installing the Agilent 1120 Compact LC Instrument**
- Step 2.): Install EZ Chrom Elite Compact Software**
- Step 3.): Configuration of Instrument**
- Step 4.): Installing the Lab Monitoring and Diagnostic Software**
- Step 5.): Priming the System and start the Installation Check using LMD software**
- Step 6.): Controlling Software Familiarization Topics**
- Step 7.): Checking the System while running a checkout sample**

Ensure that the PC used, controlling the Compact LC is already on the bench,
Max distance between controlling PC and Compact LC is 3m.

Step 1.) Unpacking and installing the Agilent 1120 Compact LC Instrument

1. Open the box and compare content with packing list.
2. Place Compact LC on the bench.
3. Remove both front covers by pressing the release buttons of the front covers and remove the two transport foams.



4. Place Solvent Bottle filled with 0.5 liter HPLC grade water in the Solvent Tray.
5. Place Solvent Inlet Filter end of the Bottle Head Assy in the Solvent Bottle (see picture below)

Item	Description
	Complete assembly
1	Ferrules with lock ring
2	Tube screw
3	Wire marker
4	Solvent tubing, 5 m
5	Frit adapter (pack of 4)
6	Solvent inlet filter, 20µm



Bottle Head Assy with Solvent bottle

6. Prime the tubing using the Syringe P/N 9301-044 and Syringe adapter P/N 9301-1337 (part of the Accessory kit) until the tubing is completely filled with water.



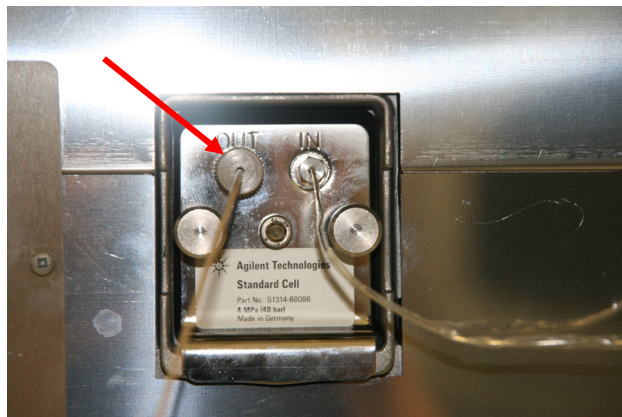
Syringe & Syringe Adapter

7. a.) for isocratic pump: remove PEEK adapter (0100-1847) from the Passive inlet valve and connect the Bottle Head Assy connector to the PEEK adapter, then connect PEEK adapter together with Bottle Head Assy to the pump inlet valve.

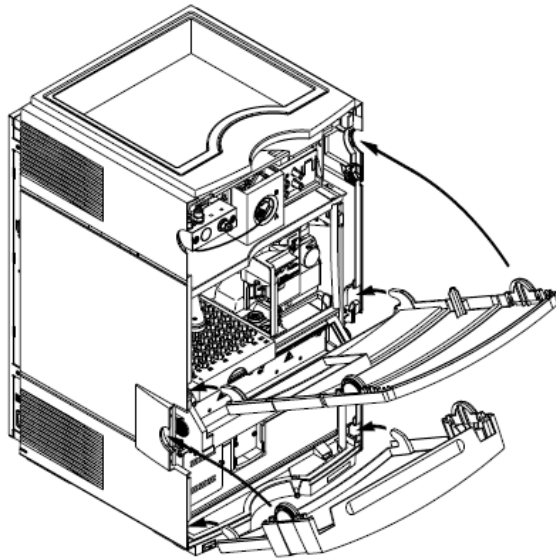


Peek Adapter & Connector

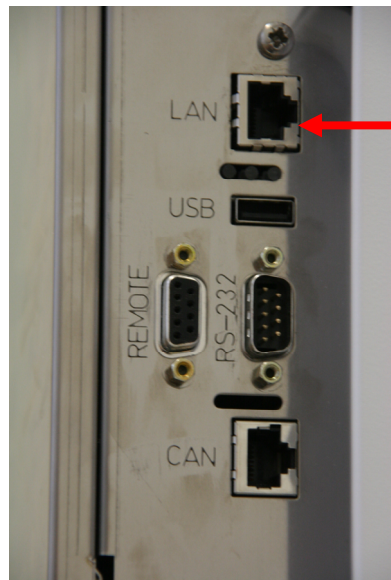
- b.) for dual channel pump: connect the Bottle Head Assy connector to inlet of the degasser.
8. Connect Waste tube with fitting (in the Accessory Kit) to the Flow cell outlet and the other end to an appropriate Solvent waste container.



9. Connect waste tube to the Purge Valve and the other end to the waste container
10. Attach Corrugated Waste Tube to the appropriate connector and to the waste container
11. Close Front Covers



12. Connect network connection cable (cross over cable) to the LAN connector of the Agilent 1120 Compact LC and to the appropriate network connector in the PC.



13. Connect Power Cord to the Agilent 1120 Compact LC and Power line.

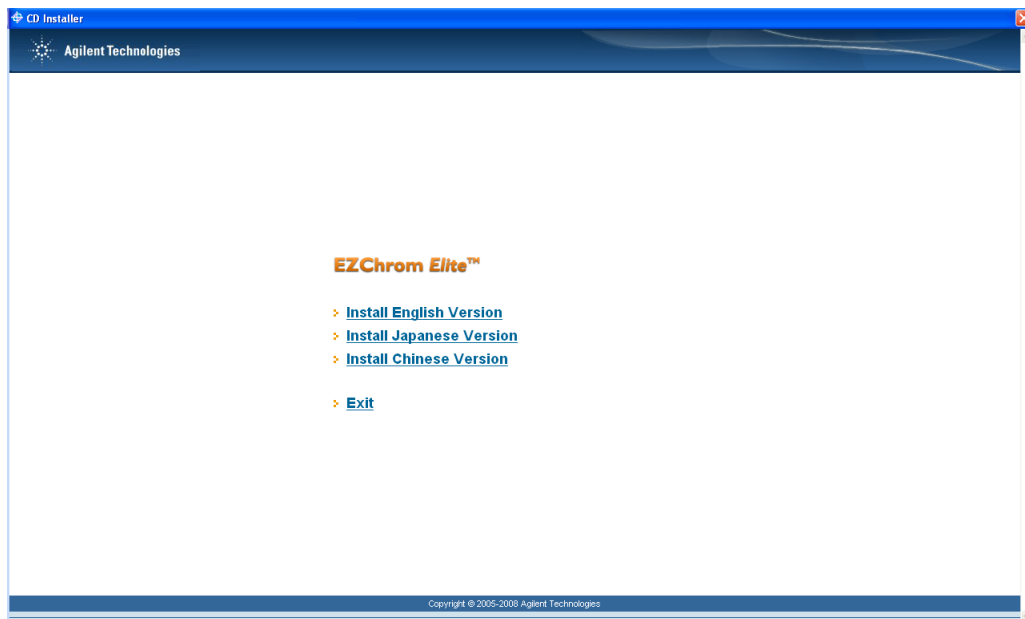
14. Switch on the Agilent 1120 Compact LC on the front left lower corner of the Instrument

Hardware installation has now finished.

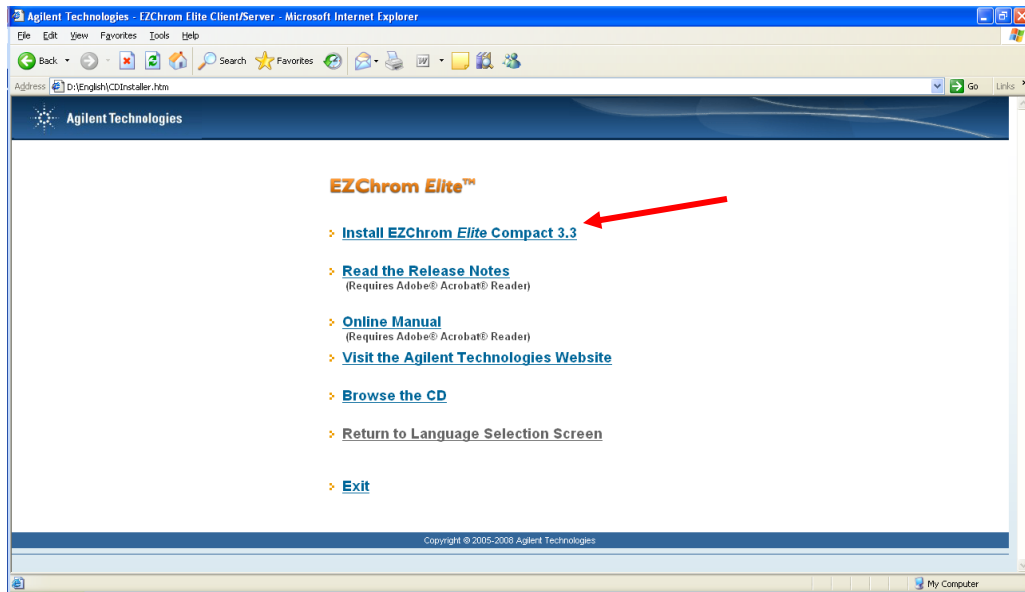
Software Installation:

Step 2.) Install EZ Chrom Elite Compact

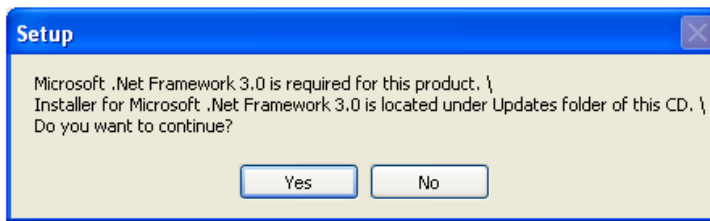
1. Insert CD 'EZ Chrom Elite' in the CD/DVD ROM in the controlling PC



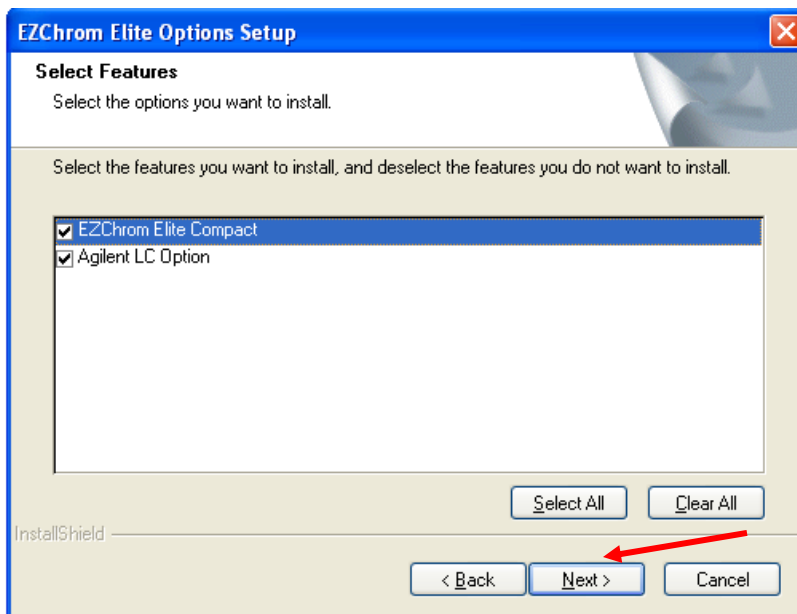
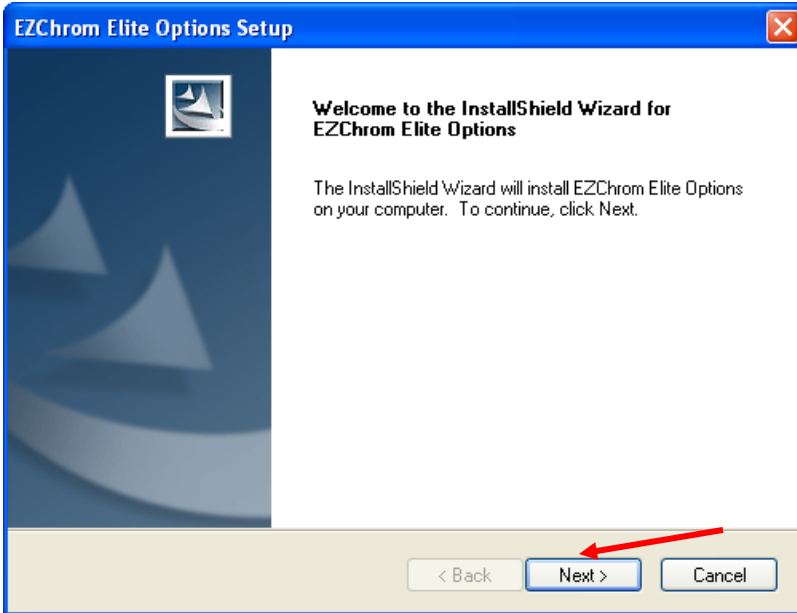
Choose your language

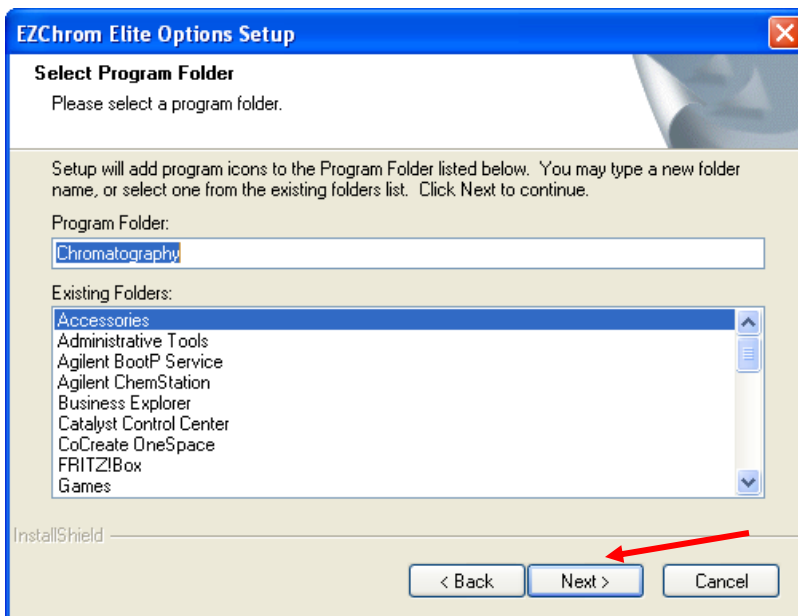
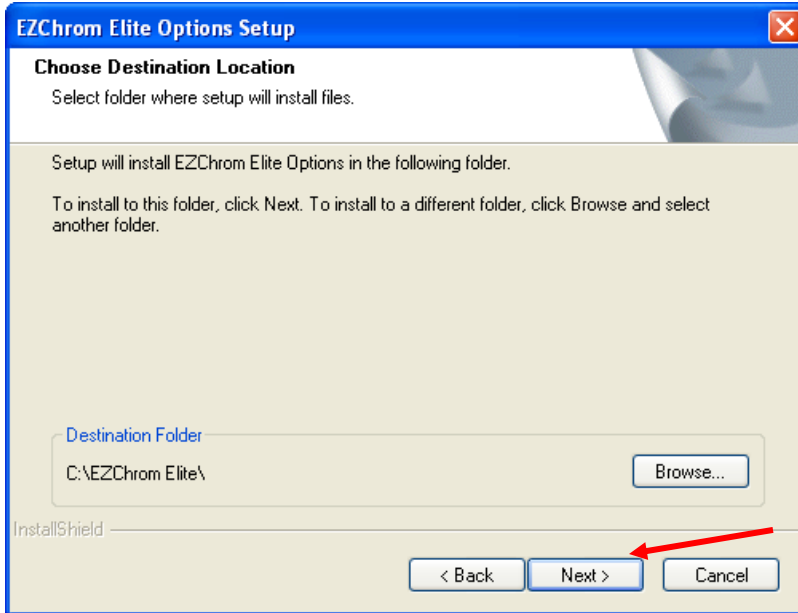


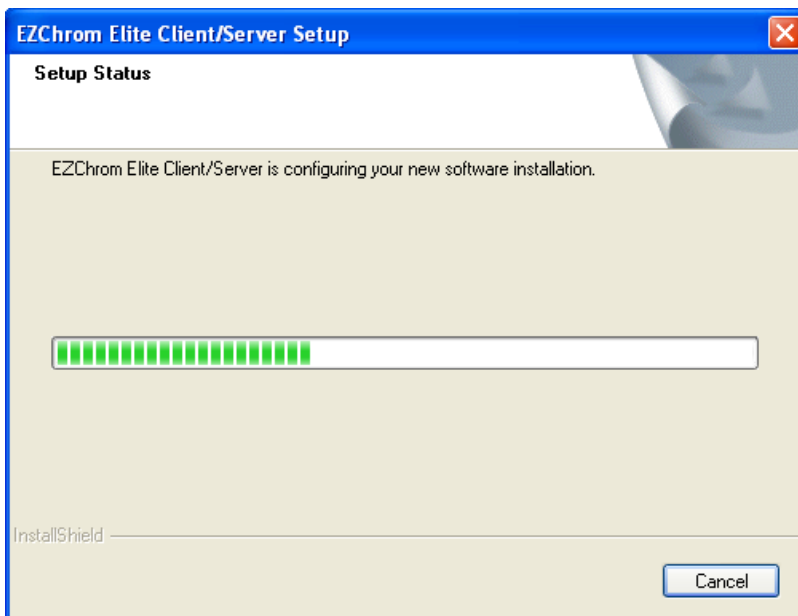
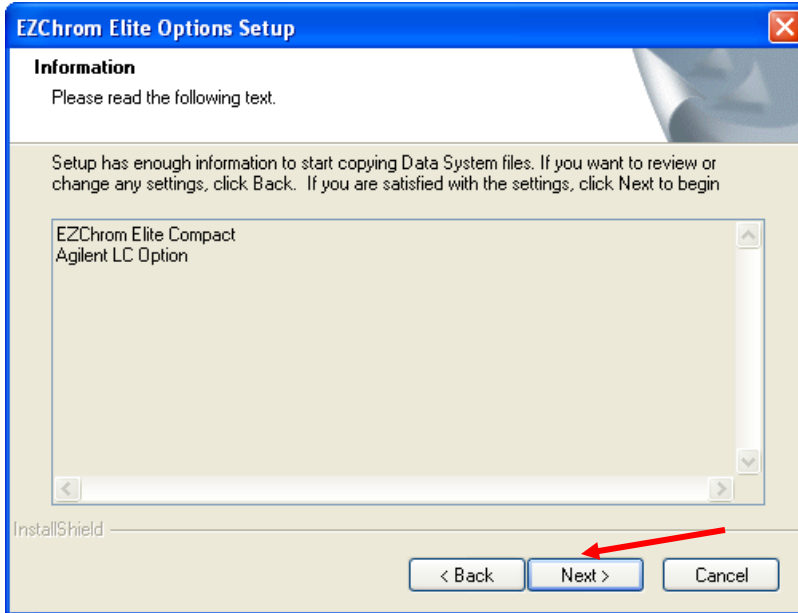
Click to Install

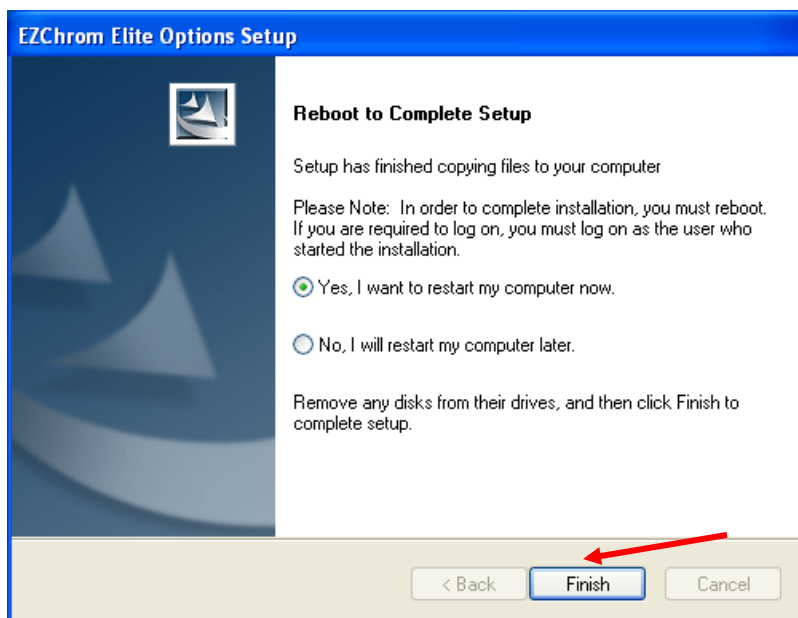
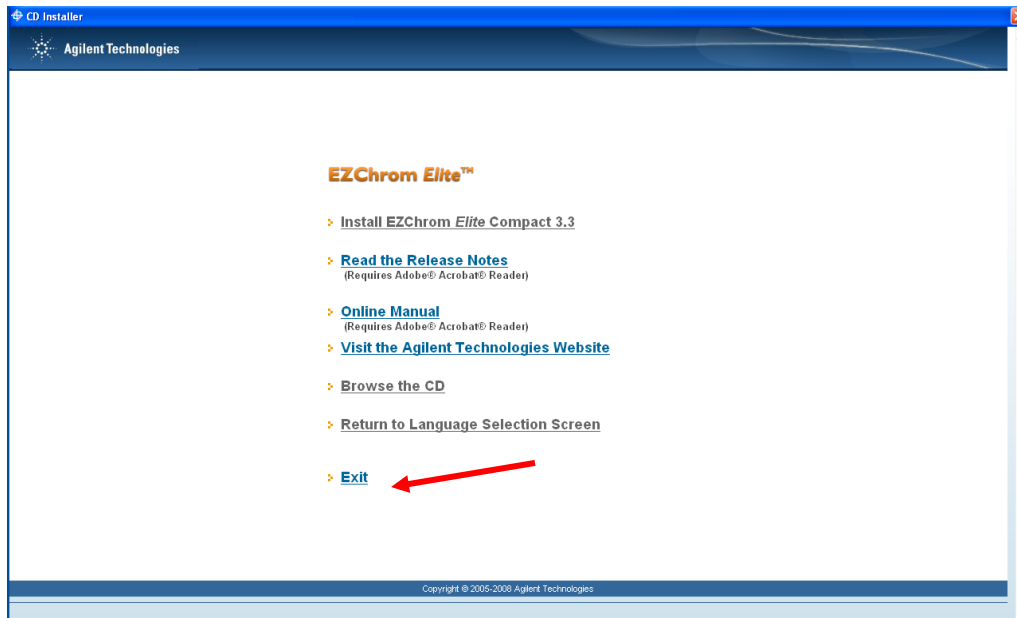


This message appears if .NET Framework 3.0 is not installed.
This Program needs to be installed to run the EZ Chrom Software
The File could be found on Browse CD:\Language\Net 3.0\dotnetfx3.exe
After the installation of .NET Framework, start the EZ Chrom Installation again.









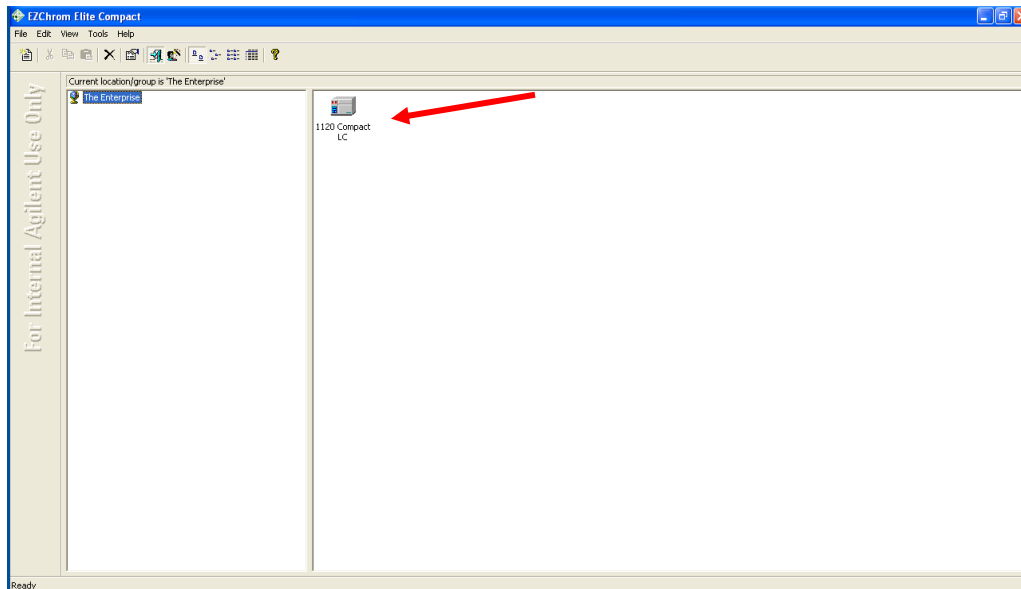
Reboot your PC

2. Locate the License Dongle (USB-Stick) and plug into a free USB Port in your PC

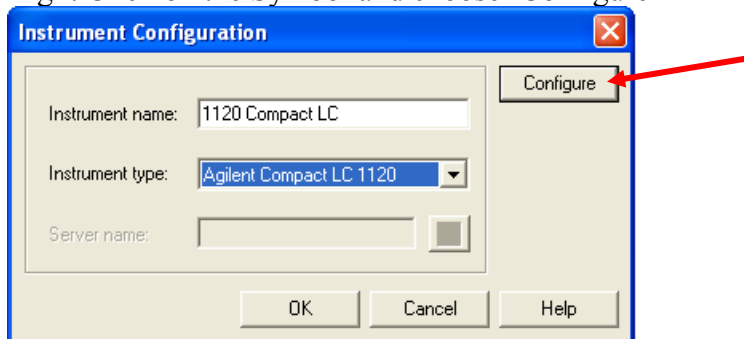
After Reboot open EZ Chrom SW located in Programs\Chromatography\EZChrom Elite

Step 3.) Configuration of Instrument

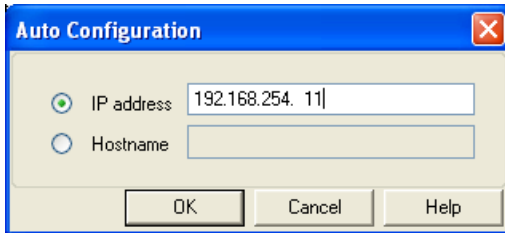
1. By default the IP settings are set to fixed IP, 192.168.254.11
2. Change PC network settings i.e. to IP: 192.168.254.10, Subnet Mask: 255.255.255.0, Default Gateway: N/A
3. If there is a need to use a different IP address, not the default, please follow instructions in the User Manual, G4280-90010, in chapter: Installing the Agilent 1120 Compact LC / LAN Configuration and EZChrom Elite Compact Installation Guide.pdf on the EZ Chrom Compact CD Rom in folder Manual



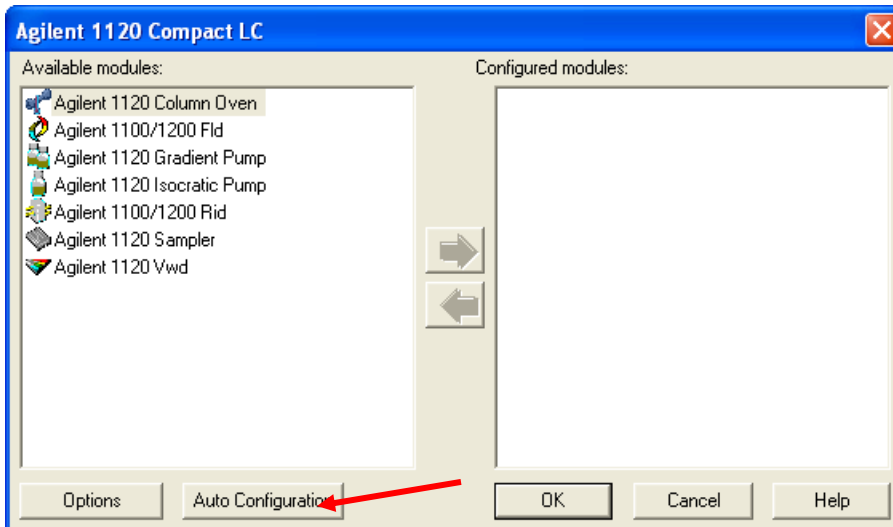
Right Click on the Symbol and choose 'Configure'



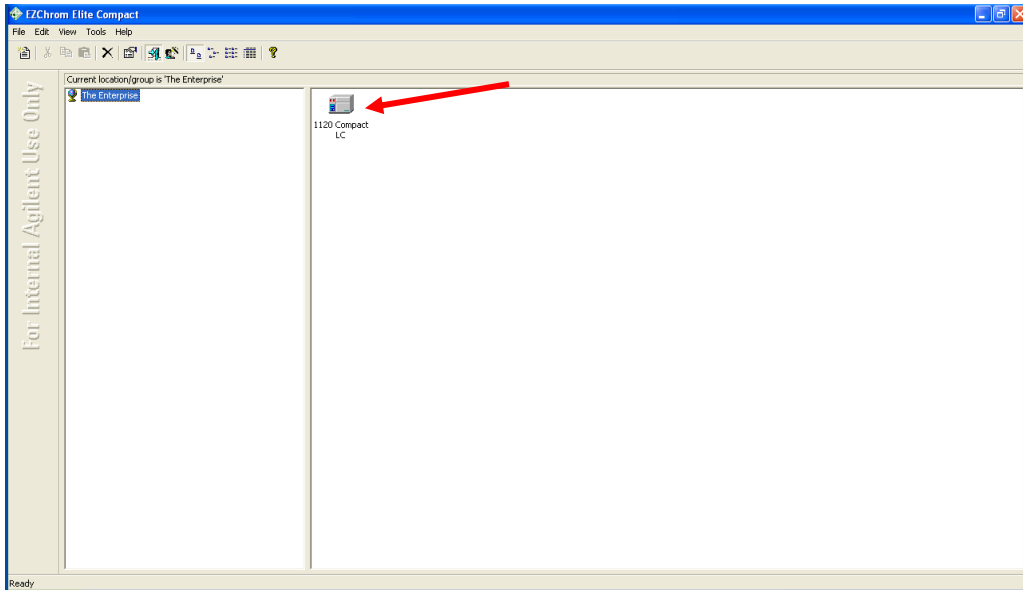
Choose Instrument Name and 'Agilent Compact LC 1120' for Instrument Type



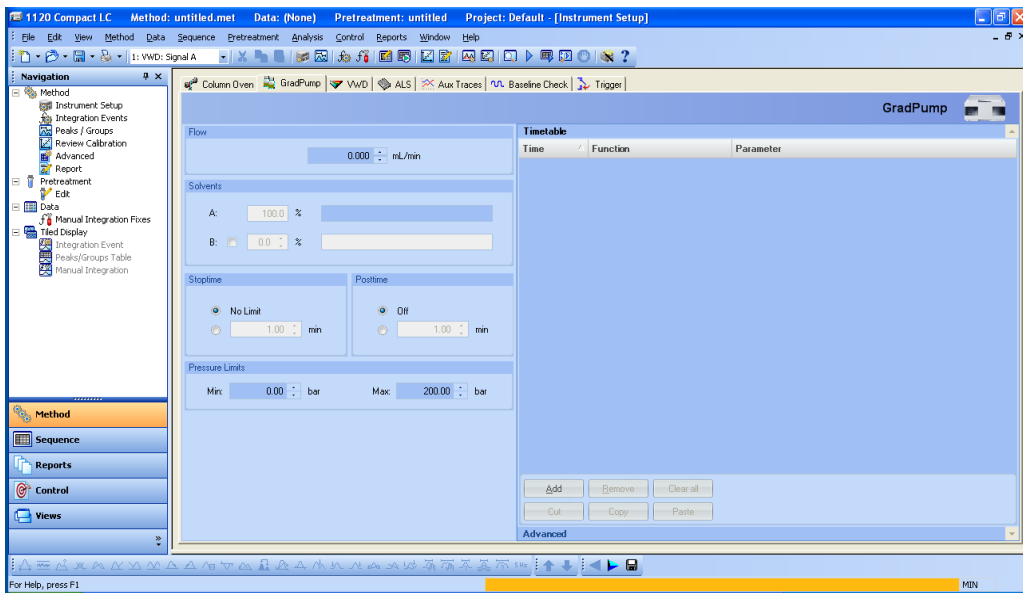
Then Configure
Click on IP and enter 192.168.254.11 (default IP Address)



Click on Auto Configure
When instruments are found click 'OK'



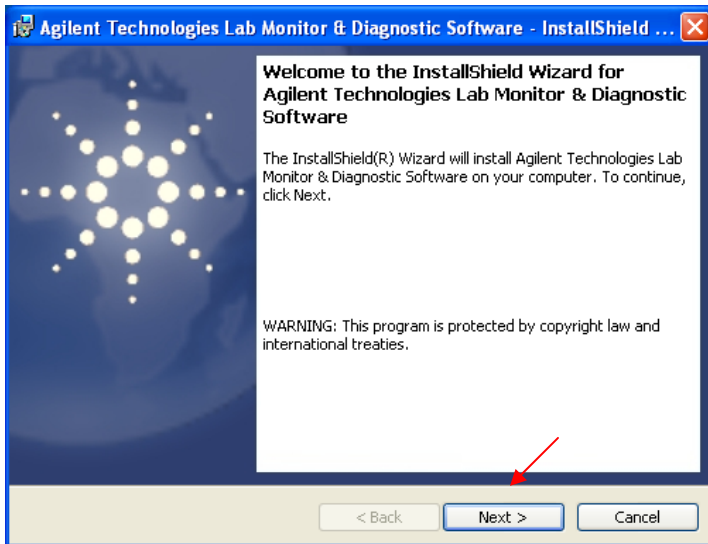
Now double Click on Icon



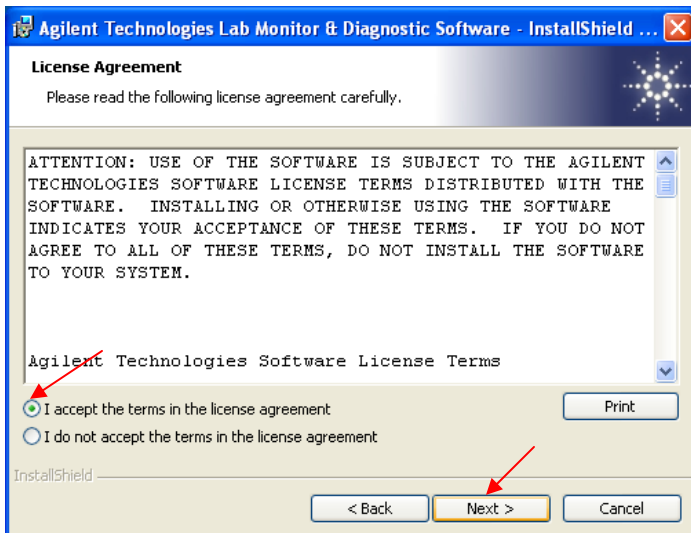
Now you are online with the instrument

Step 4.) Installing the Lab Monitoring and Diagnostic Software

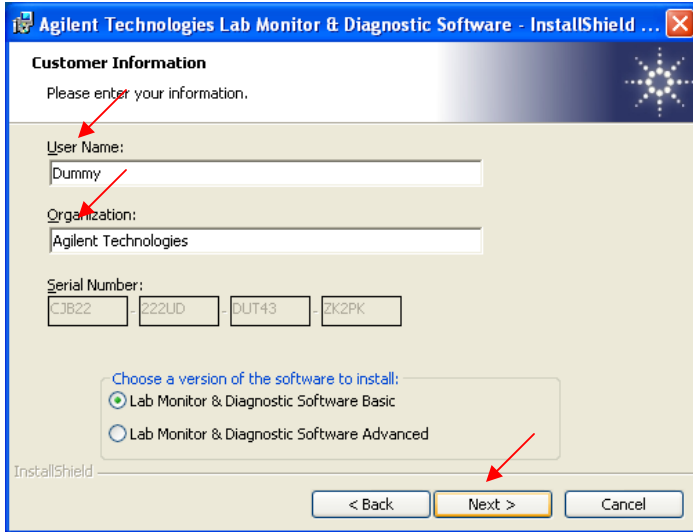
1. Insert DVD Lab Monitoring and Diagnostic Software in the DVD ROM of the controlling PC



Welcome Screen, click on 'Next'



Accept the License Agreement after reading



Customer Information
Please enter your information.

User Name:
Dummy

Organization:
Agilent Technologies

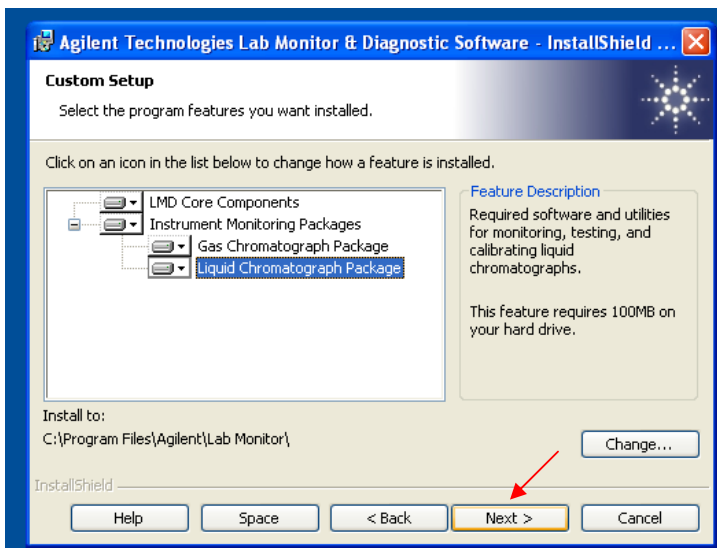
Serial Number:
CJB22 - 222UD - DUT43 - ZK2PK

Choose a version of the software to install:
 Lab Monitor & Diagnostic Software Basic
 Lab Monitor & Diagnostic Software Advanced

InstallShield

< Back Next > Cancel

Enter a User Name and Organization



Custom Setup
Select the program features you want installed.

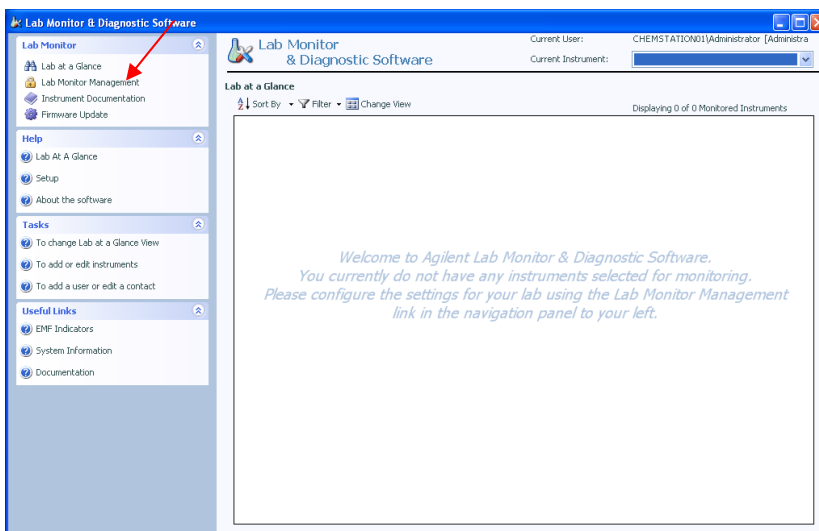
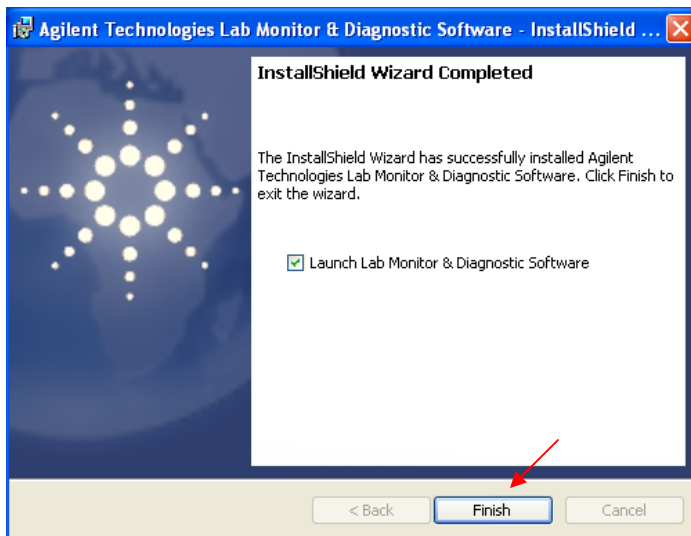
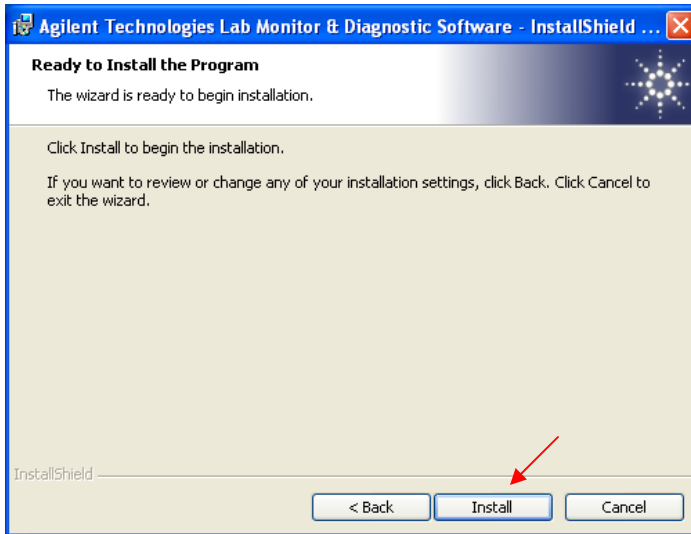
Click on an icon in the list below to change how a feature is installed.

Feature Description
Required software and utilities for monitoring, testing, and calibrating liquid chromatographs.
This feature requires 100MB on your hard drive.

Install to:
C:\Program Files\Agilent\Lab Monitor\ Change...

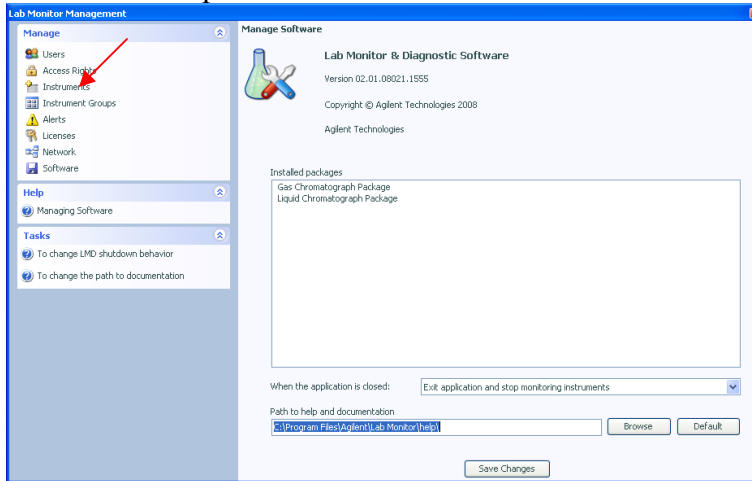
InstallShield

Help Space < Back Next > Cancel

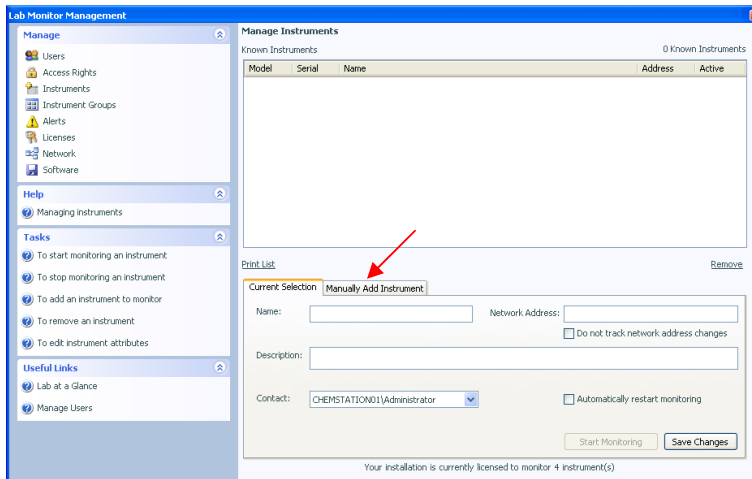


Click on 'Instrument Configuration'

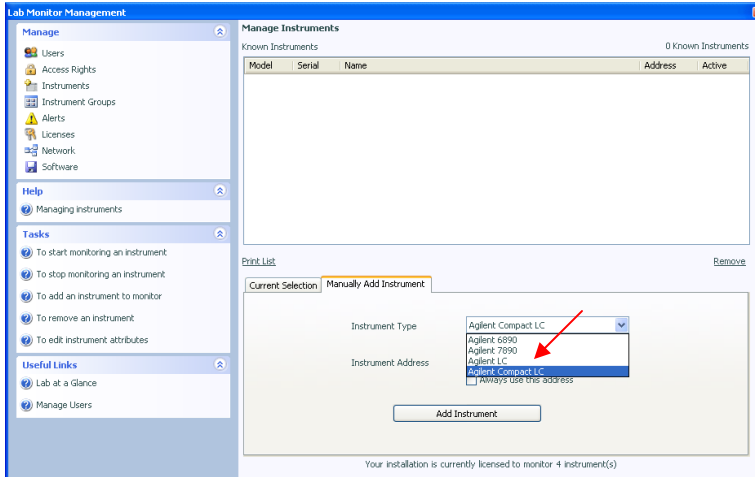
New window opens



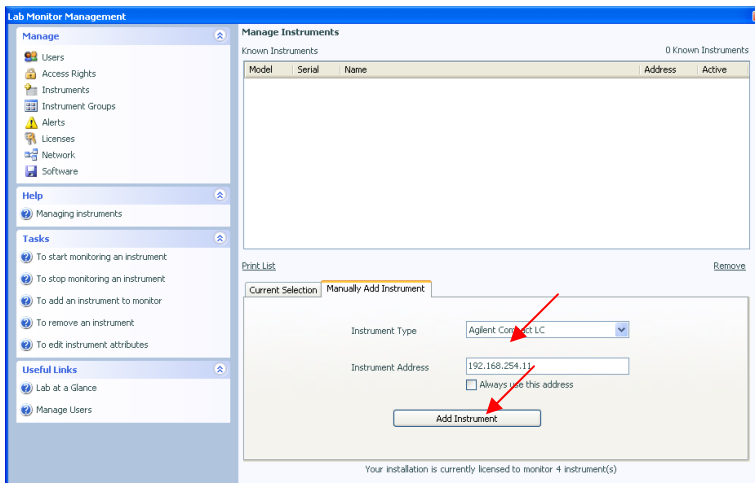
Click on 'Instruments' to add your Compact LC



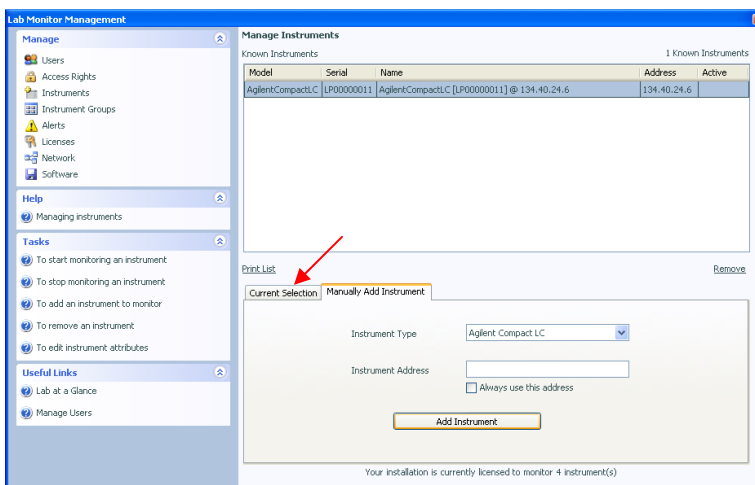
Change to 'Manual Add Instrument' Tab



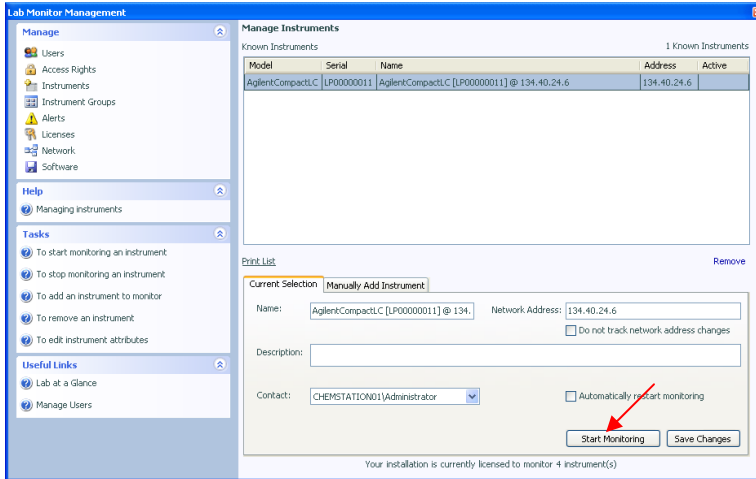
Choose Agilent 1120Compact LC



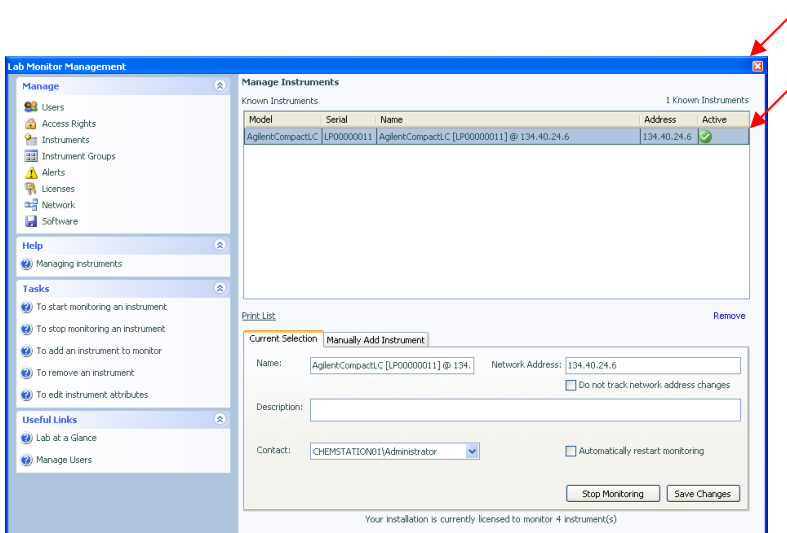
Enter IP Address 192.168.254.11 (default)



Change to 'Current Instrument' Tab

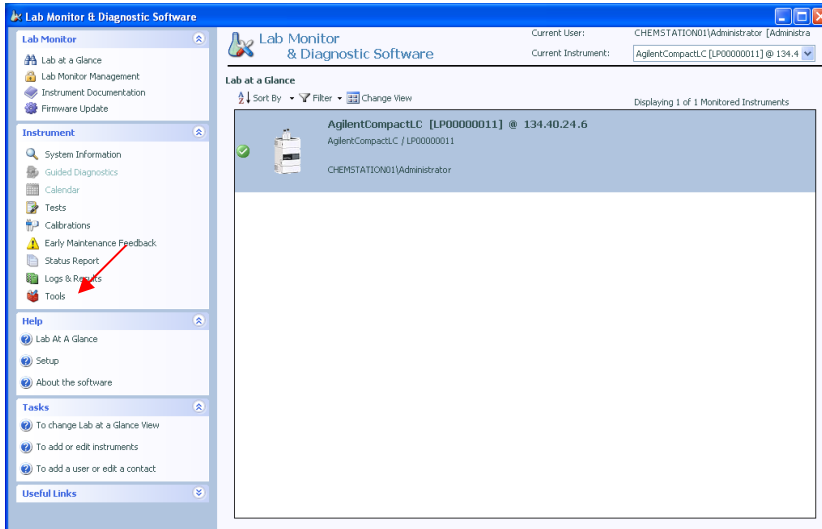


Start Monitoring

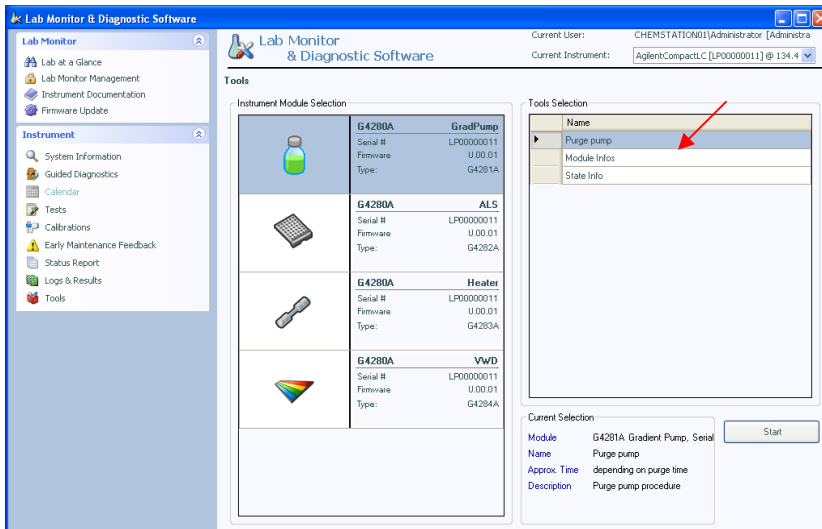


When green symbol appears, close the window.

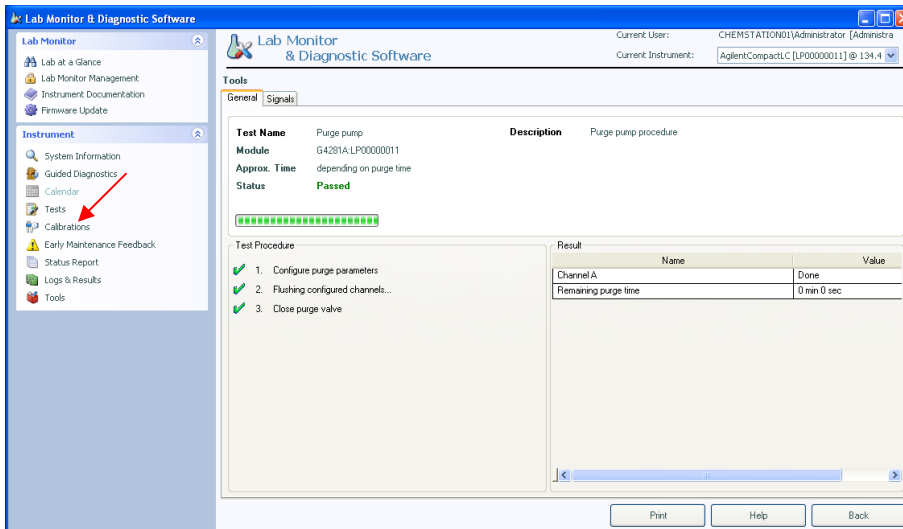
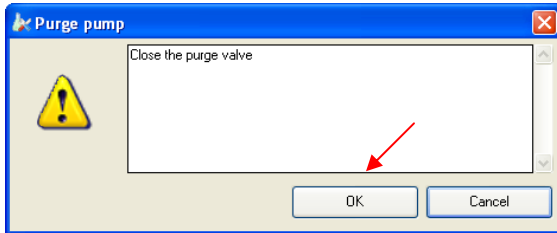
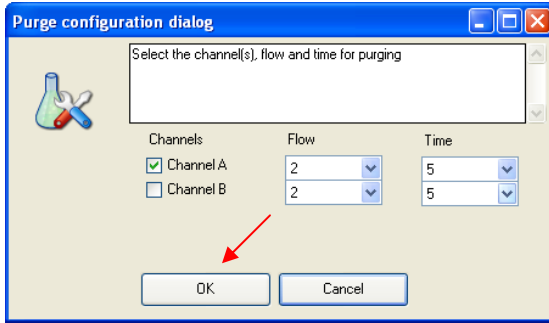
Step 5.) Priming the System and start the Installation Check using LMD software



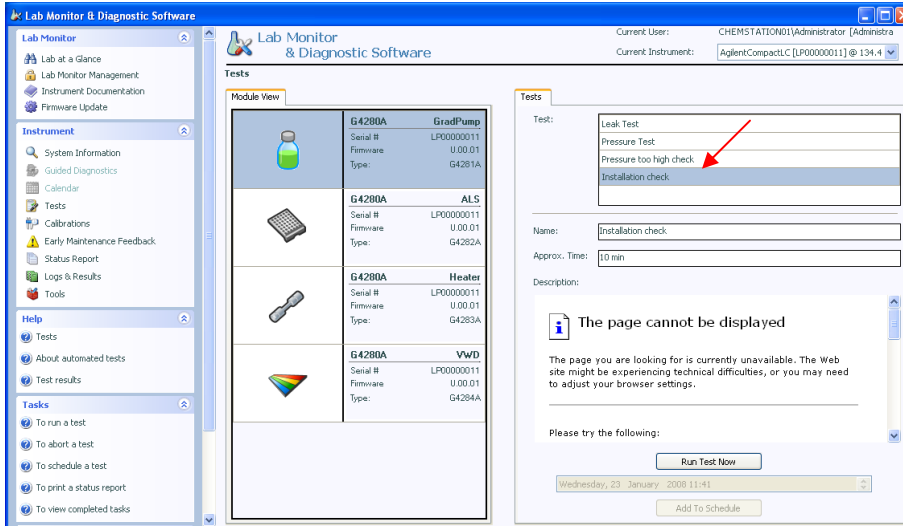
Click on 'Tools'



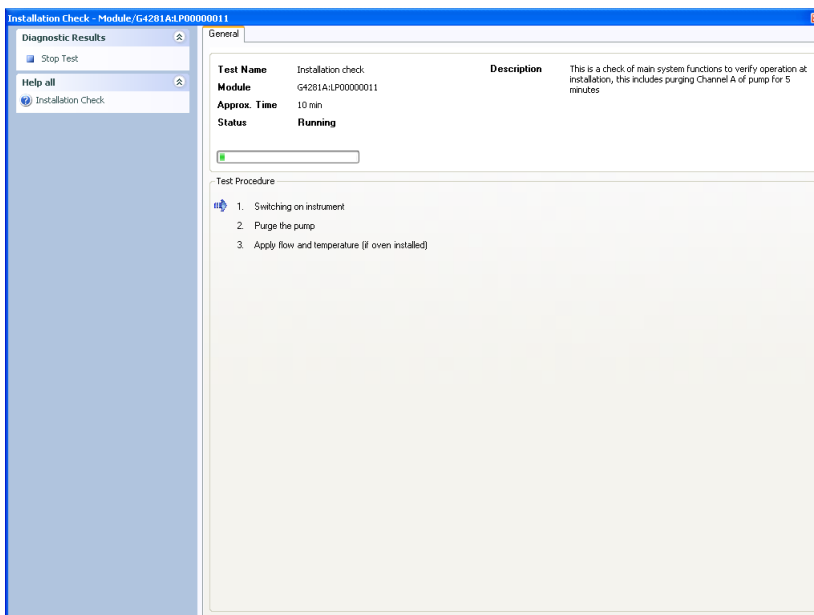
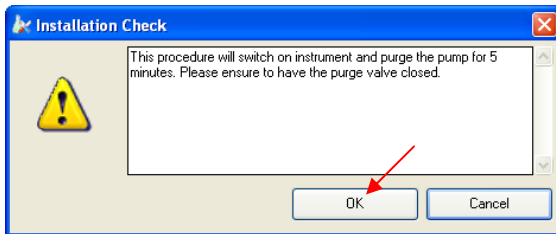
Choose 'Purge System' ensure that the Purge Valve is closed, recommended 5 min with Flow rate 2 ml/min, to remove air out of the System.



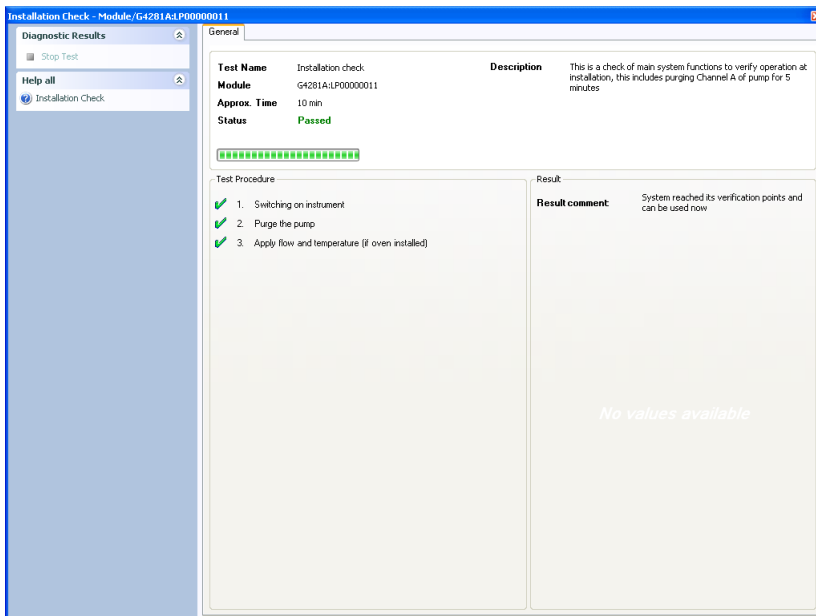
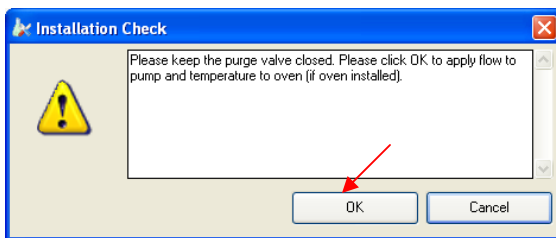
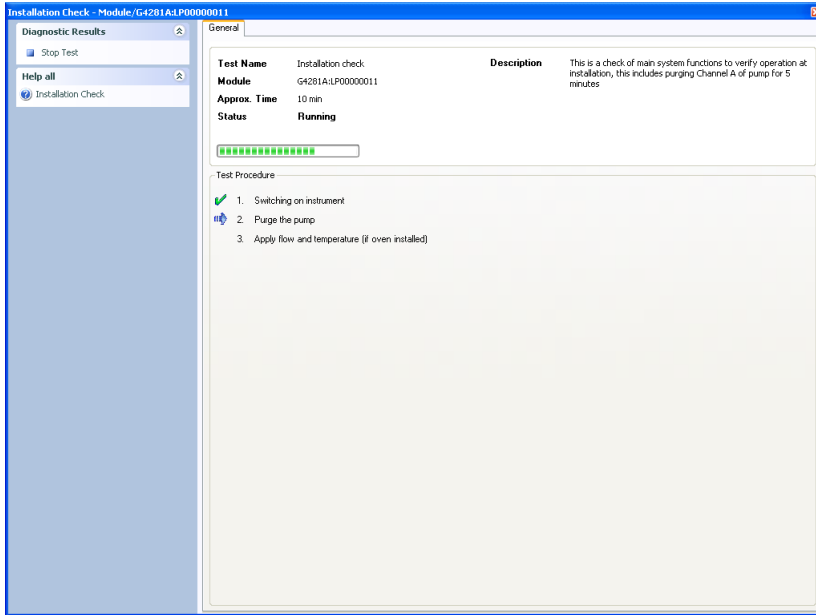
Change to 'Tests'



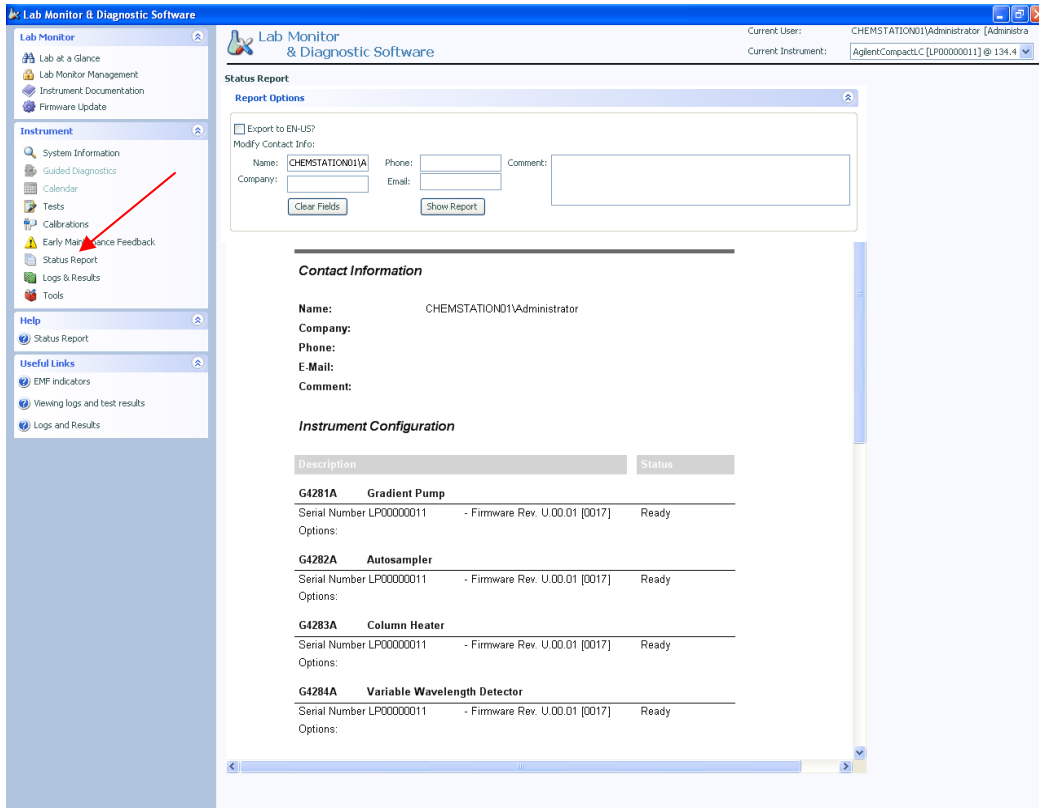
Choose 'Installation Check' then 'Run Test Now'



Progress runs automatically



Close window



The screenshot displays the 'Lab Monitor & Diagnostic Software' interface. The left-hand navigation pane includes sections for 'Lab Monitor', 'Instrument', 'Help', and 'Useful Links'. A red arrow points to the 'Status Report' option under the 'Help' section. The main content area is titled 'Status Report' and contains a 'Report Options' section with a checkbox for 'Export to EN-US?' and a 'Modify Contact Info' section with input fields for Name, Phone, Company, Email, and Comment. Below this is a 'Contact Information' section with pre-filled details for 'CHEMSTATION01A'. The 'Instrument Configuration' section features a table listing various components and their status.

Description	Status
G4281A Gradient Pump Serial Number LP00000011 - Firmware Rev. U.00.01 [0017] Options:	Ready
G4282A Autosampler Serial Number LP00000011 - Firmware Rev. U.00.01 [0017] Options:	Ready
G4283A Column Heater Serial Number LP00000011 - Firmware Rev. U.00.01 [0017] Options:	Ready
G4284A Variable Wavelength Detector Serial Number LP00000011 - Firmware Rev. U.00.01 [0017] Options:	Ready

Click on 'Status Report' to create the printable Report,
Print Status Report.

Step 6.) Controlling Software Familiarization Topics

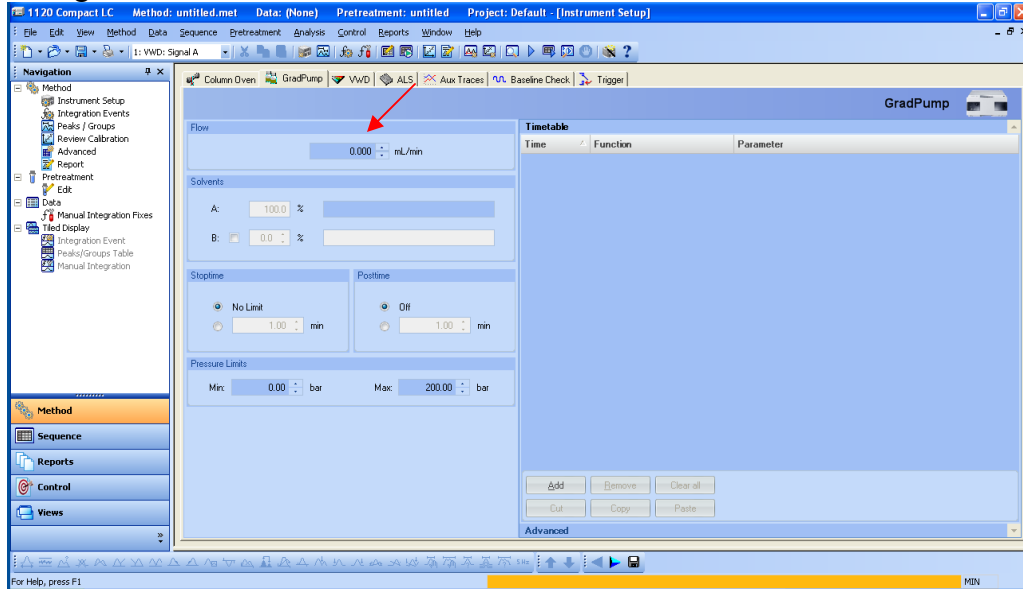
Open 'EZChromEliteCompactStartup.pdf' located on the EZ Chrom Compact CD Rom in folder Manual and follow the Learning Instructions

Step 7.) Checking the System while running a checkout sample

1. Load Checkout Method 'Checkout.met'

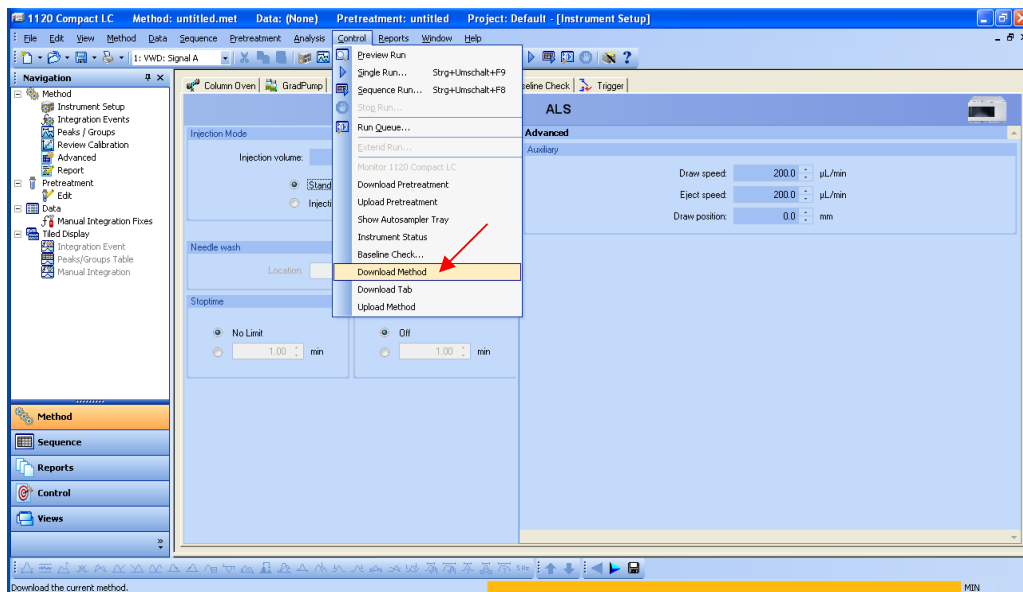
or

Change to EZ Chrom Software and enter Method Parameters



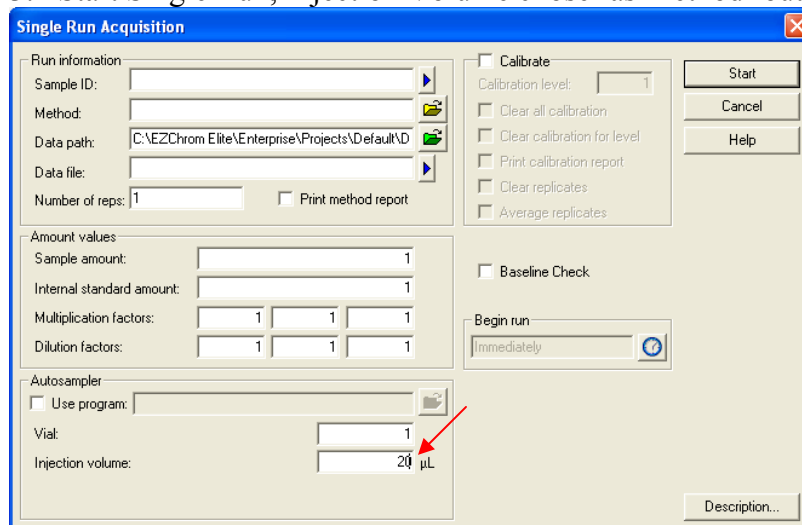
Method Parameters:

Flow:	1 ml/min
Inj. Vol:	20µl
Oven temp:	not controlled
VWD Wavelength:	273nm
Runtime:	1min



Download Method to Instrument

2. a. For Configurations with Autosampler: Place Vial filled with 1.5ml checkout solution in vial pos 1 in the Autosampler Tray
2. b. For Configurations with Manual Injection Valve: Load 20 μ l of checkout solution with a syringe in the Valve.
3. Start Single Run, Injection Volume chose 'as Method' out of Vial 1.



The screenshot shows the 'Single Run Acquisition' dialog box with the following settings:

- Run information: Sample ID, Method, Data path (C:\EZChrom Elite\Enterprise\Projects\Default\), Data file, Number of reps: 1, Print method report
- Amount values: Sample amount: 1, Internal standard amount: 1, Multiplication factors: 1 1 1, Dilution factors: 1 1 1
- Autosampler: Use program, Vial: 1, Injection volume: 20 μ L (indicated by a red arrow)
- Calibrate: Calibrate, Calibration level: 1, Clear all calibration, Clear calibration for level, Print calibration report, Clear replicates, Average replicates
- Baseline Check: Baseline Check
- Begin run: Immediately
- Buttons: Start, Cancel, Help, Description...

4. Click on Report in the Menu Bar \rightarrow Method Report \rightarrow Print report
5. Store the two Printed Reports in a Binder and you have finished the Agilent 1120 Compact LC System Installation.



G4280-90001

Part Number: G4280-90001

Edition 02 / 2008
Printed in Germany

© **Agilent Technologies, Inc. 2008**

Agilent Technologies
Hewlett-Packard-Strasse 8
76337 Waldbronn, Germany