

# IC Application Note No. N-70

**Title:** Sulfide in effluent

**Summary:** Determination of sulfide in an effluent sample using anion chromatography with amperometric detection.

**Sample:** Effluent sample

**Sample Preparation:** Dilution 1:20 with 50 mmol/L sodium hydroxide

**Column:** 6.1030.430 Metrosep A Supp 15 – 250

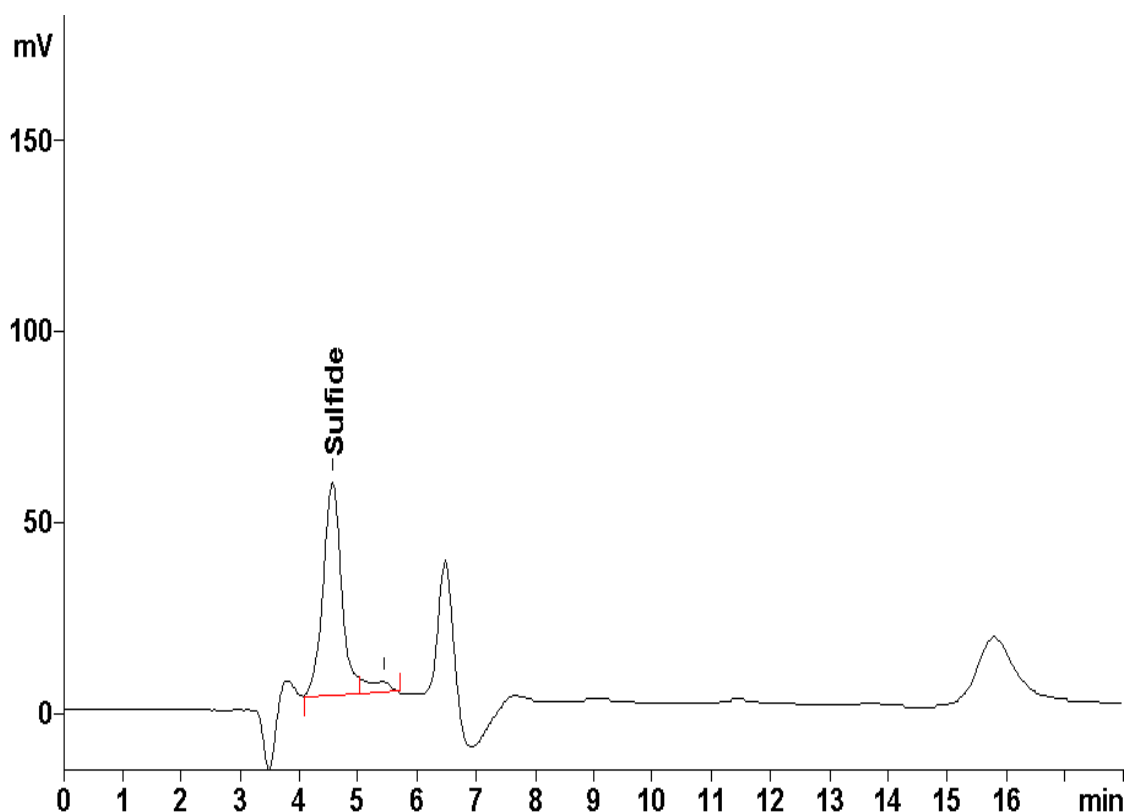
**Temperature:** 45 °C

**Eluent:** 50 mmol/L sodium hydroxide

**Flow:** 0.7 mL/min

**Voltage:** 0.0 V (silver electrode)

**Injection Volume:** 100 µL



**Results:**

Sulfide  
µg/L

402