

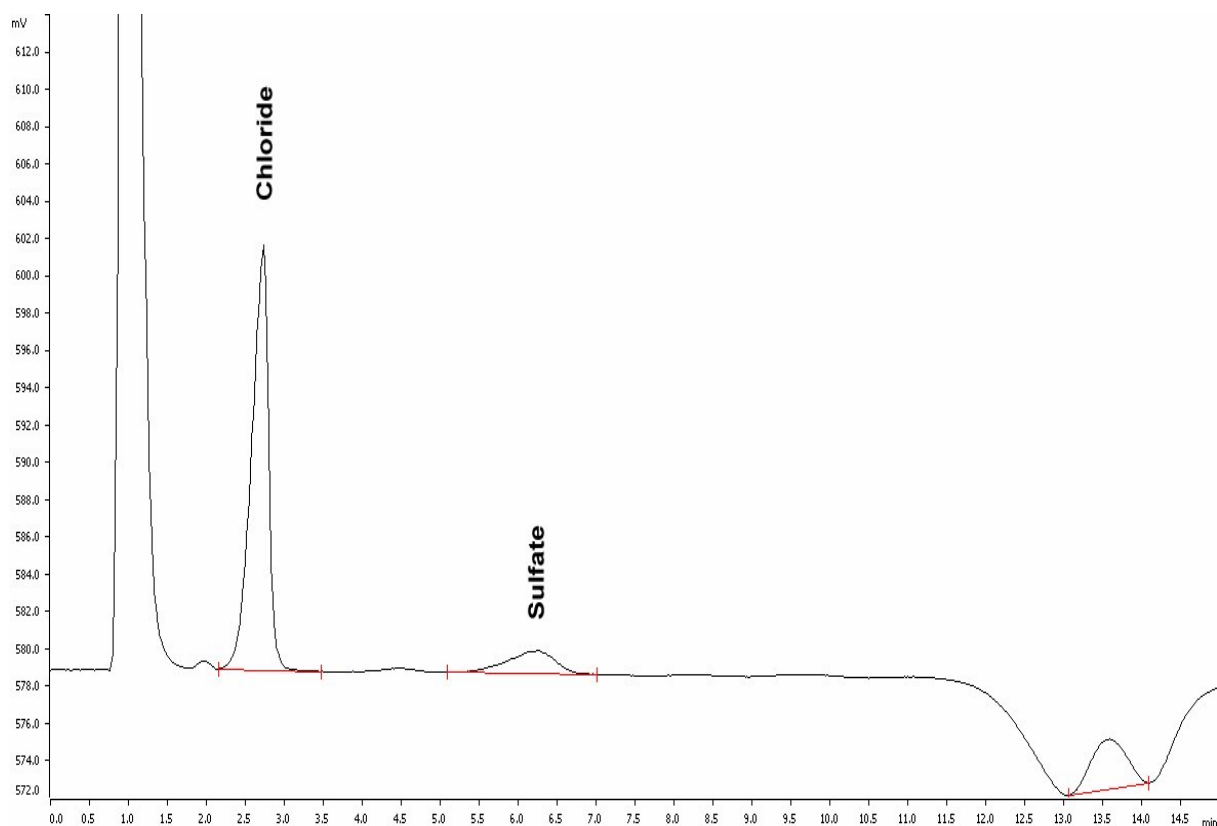
# IC Application Note No. N-69

**Title:** Chloride and sulfate in an emulsion applying Metrohm Inline Dialysis

**Summary:** Determination of chloride and sulfate in effluent after Metrohm Inline Dialysis using anion chromatography with direct conductivity detection.

**Sample:** Emulsion  
**Sample Preparation:** Direct injection after Inline Dialysis

**Column:** 6.1009.000 Super-Sep Anion  
**Eluent:** 2.5 mmol/L phthalic acid, 5% acetonitrile, pH = 4.2  
**Flow:** 1.25 mL/min  
**Injection Volume:** 20 µL



|                 |               |              |
|-----------------|---------------|--------------|
| <b>Results:</b> | Chloride mg/L | Sulfate mg/L |
|                 | 55.0          | 15.2         |