

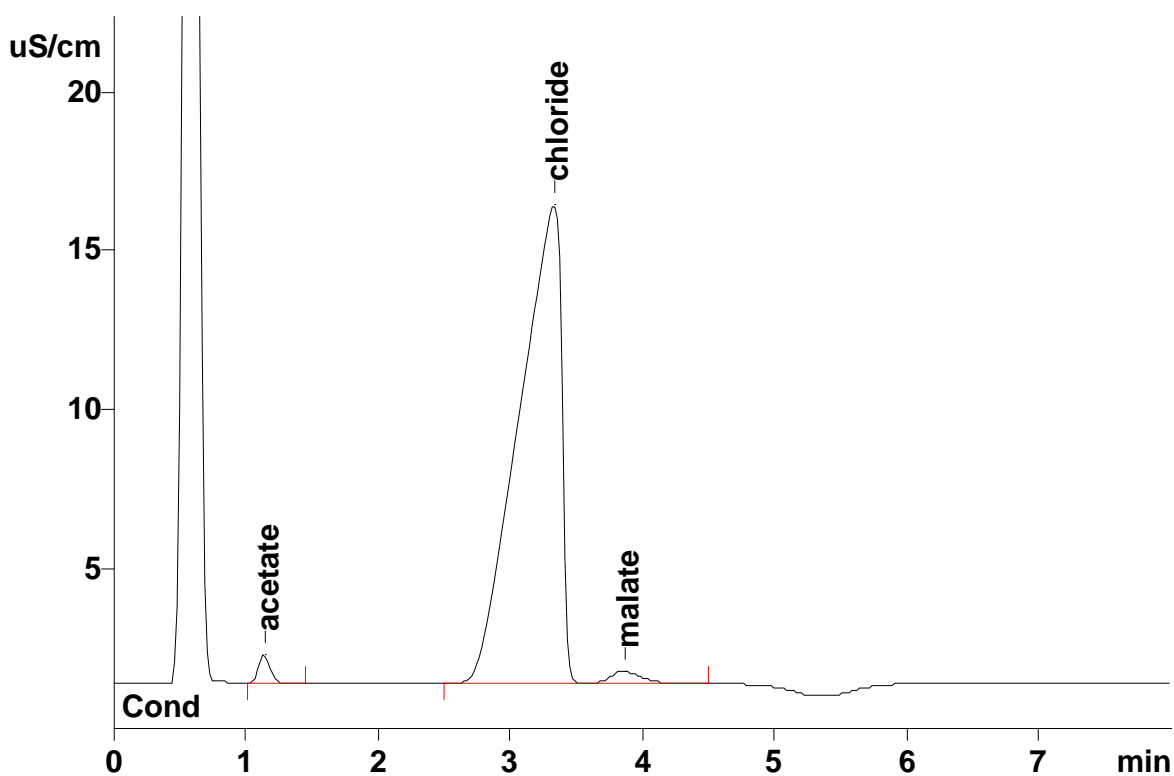
# IC Application Note No. N-61

**Title:** Acetate, chloride and malate in infusion solutions

**Summary:** Determination of acetate, chloride and malate in an infusion solution using anion chromatography with direct conductivity detection.

**Sample:** Infusion solution containing hydroxyethyl starch  
**Sample Preparation:** Dilution 1 : 50 in eluent

**Column:** 6.1009.000 Super-Sep Anion  
**Eluent:** 3.0 mmol/L phthalic acid, 2% acetone  
 pH = 4.2 (TRIS)  
**Flow:** 2.0 mL/min  
**Injection Volume:** 100  $\mu$ L



<b>Results:</b>	Acetate mg/L	Chloride mg/L	Malate mg/L
	8133	2406	4186