

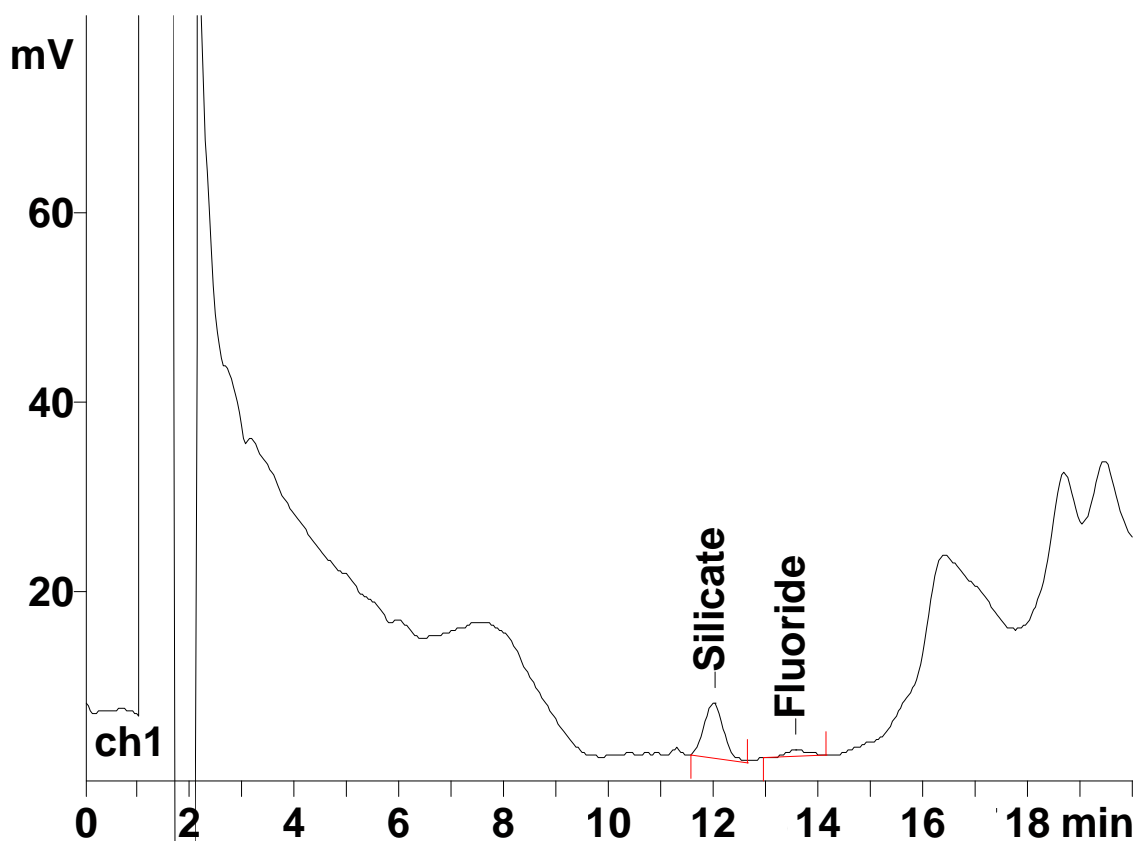
IC Application Note No. N-56

Title: Silicate besides fluoride in tap water

Summary: Determination of silicate besides fluoride in tap water using anion chromatography with direct conductivity detection.

Sample: Tap water
Sample Preparation: Dilution 1 : 1000 with ultrapure water

Column: 6.1005.100 Phenomenex Starlon A 300 (2 in a row)
 6.1005.020 PRP-X 100 Guard for preconcentration
Eluent: 1.0 mmol/L sodium hydroxide, 15 mmol/L fructose
Flow: 1.5 mL/min
Injection Volume: 10 mL pre-concentrated



Results:	Silicate mg/L	Fluoride mg/L
	6.42	n.q.*

Comment: The eluent was purged with helium during operation.
 * The fluoride concentration of Herisau tap water is approx. 40 µg/L.