

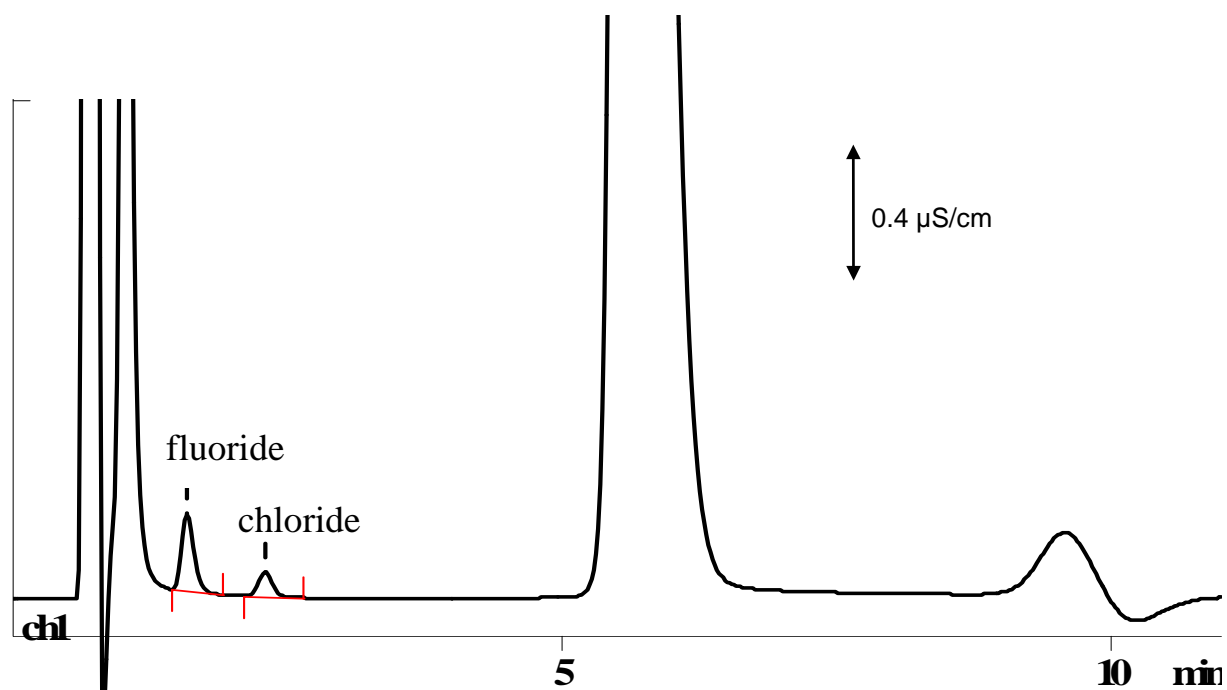
IC Application Note No. N-33

Title: Fluoride and chloride in gypsum

Summary: Determination of fluoride and chloride in gypsum using anion chromatography with direct conductometric detection.

Sample: Aqueous extract of gypsum
Sample Preparation: Dilution 1 : 10

Column: 6.1009.000 SUPER-SEP Anion
Eluent: 2.5 mmol/L phthalic acid, 5% acetonitrile, pH = 4.2 (TRIS)
Flow: 1.5 mL/min
Injection Volume: 100 μ L



Results:	Fluoride mg/L	Chloride mg/L
	6.7	2.2