

# IC Application Note No. C-96

**Title:** Trace analysis of monovalent cations in ethanolamine matrix (secondary circuit of a pressurized water reactor) applying Metrohm Inline Sample Preparation with an 800 Dosino for liquid handling

**Summary:** Determination of traces of lithium, sodium and ammonium in ethanolamine containing water using cation chromatography with direct conductivity detection.

**Sample:** Artificial secondary circuit water from pressurized water reactor (PWR)

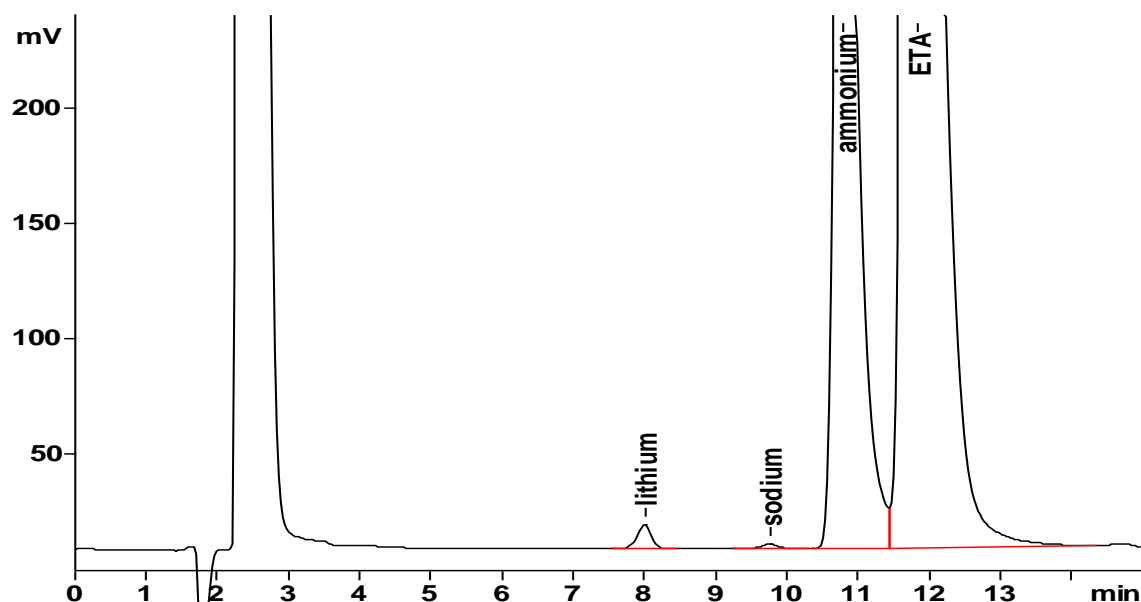
**Sample Preparation:** Metrohm Inline Preconcentration

**Column:** 6.1010.230 Metrosep C 2 – 250  
6.1010.310 Metrosep PCC 1 HC (preconcentration)

**Eluent:** 4.0 mmol/L tartaric acid  
0.1 mmol/L dipicolinic acid

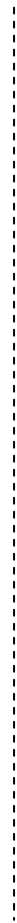
**Flow:** 1.0 mL/min

**Injection Volume:** 5 mL preconcentrated



<b>Results:</b>	Lithium	Sodium	Ammonium	Ethanolamine
Conc. [ $\mu\text{g/L}$ ]	<b>0.8</b>	<b>0.8</b>	<b>200</b>	<b>2000</b>
RSD (n = 6) [%]	<b>0.6%</b>	<b>1.5%</b>	<b>0.4%</b>	<b>0.2%</b>

Setup of the Metrohm Inline Calibration and Preconcentration with the 800 Dosino



Overlay of the Inline Calibration chromatograms

