

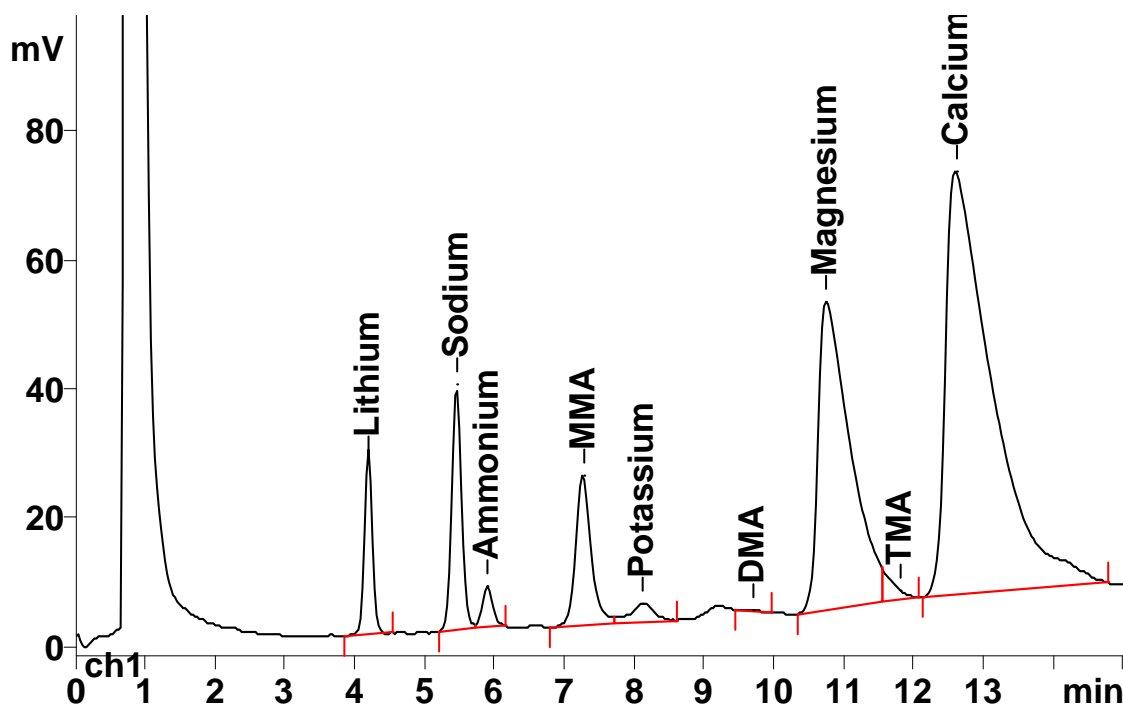
# IC Application Note No. C-95

**Title:** Methylamine (MMA), dimethylamine (DMA) and trimethylamine (TMA) in methylpyrrolidone applying Metrohm Inline Matrix Elimination

**Summary:** Determination of traces of methylamine, dimethylamine and trimethylamine in methylpyrrolidone using cation chromatography with direct conductivity detection.

**Sample:** Methylpyrrolidone  
**Sample Preparation:** Dilution 1 : 25, inline matrix elimination

**Column:** Shodex IC Y-521  
 6.1010.310 Metrosep C PCC 1 HC (preconcentration)  
**Eluent:** 4.0 mmol/L tartaric acid  
**Flow:** 1.5 mL/min **Temperature:** 40°C  
**Injection Volume:** 1 mL preconcentrated



<b>Results:</b>	Methylamine µg/L	Dimethylamine µg/L	Trimethylamine µg/L	Li <sup>+</sup> , Na <sup>+</sup> , NH <sub>4</sub> <sup>+</sup> , K <sup>+</sup> , Ca <sup>2+</sup> , Mg <sup>2+</sup>
1 : 25 diluted	23.6	<2	n.d.	n.q.
Undiluted	590	<50	n.d.	n.q.