



## Phenols and cresols

# Separation of isomers and aromatic alcohols on a chiral capillary column

## Application Note

Environmental

### Authors

Agilent Technologies, Inc.

### Introduction

The Agilent CP-Chirasil-Dex CB column is not only suited for the separation of optical isomers, but has also a unique selectivity for different types of positional isomers, as shown here for phenols and cresols.



**Agilent Technologies**

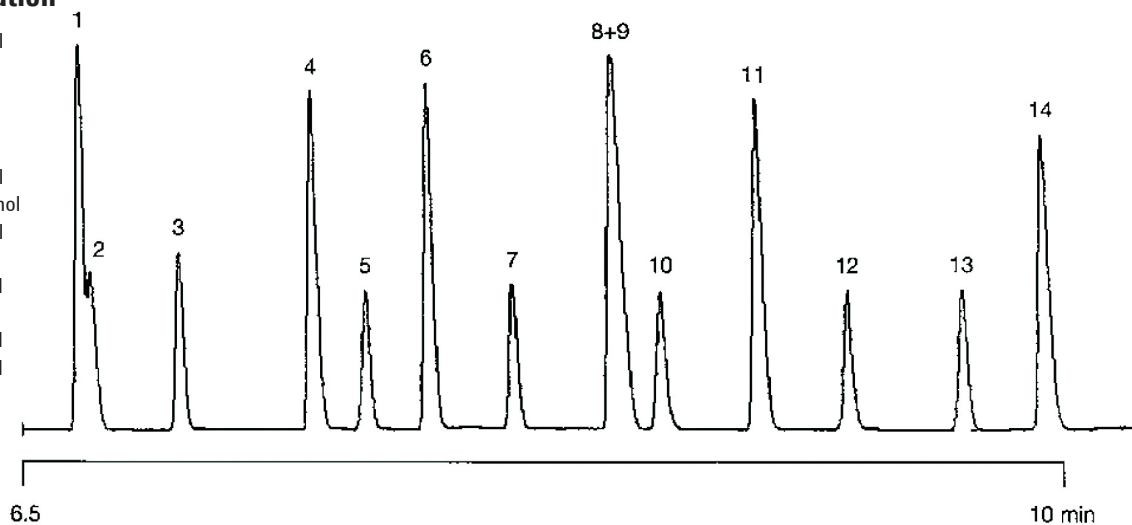
## Conditions

Technique : GC-capillary  
Column : Agilent CP-Chirasil-Dex CB, 0.25 mm x 25 m fused silica WCOT (df = 0.25 µm) (Part no. CP7502)  
Temperature : 80 °C → 140 °C, 10 °C/min;  
140 °C → 200 °C, 5 °C/min  
Carrier Gas : He, 200 kPa (2 bar, 28 psi)  
Injector : Split, 100 mL/min  
T = 250 °C  
Detector : FID  
T = 250 °C  
Sample Size : 0.2 µL  
Concentration Range : 5 mg/mL  
Solvent Sample : dichloromethane

Courtesy : A. Kellerhals, Schenectady Pratteln AG,  
Pratteln, Switzerland

## Peak identification

1. 2,6-dimethylphenol
2. phenol
3. o-cresol
4. p-cresol
5. m-cresol
6. 2,4-dimethylphenol
7. 2,4,6-trimethylphenol
8. 2,5-dimethylphenol
9. o-ethylphenol
10. 2,3-dimethylphenol
11. p-ethylphenol
12. 3,5-dimethylphenol
13. 3,4-dimethylphenol
14. m-ethylphenol



[www.agilent.com/chem](http://www.agilent.com/chem)

This information is subject to change without notice.

© Agilent Technologies, Inc. 2011

Printed in the USA

31 October, 2011

First published prior to 11 May, 2010

A01449



**Agilent Technologies**