



Flavors

Application Note

Food Testing & Agriculture

Authors

Agilent Technologies, Inc.

Introduction

The Agilent CP-Wax 52 CB Is highly selective and inert for polar compounds. The use of 0.10 mm columns make a short analysis time possible while maintaining high resolution.



Agilent Technologies

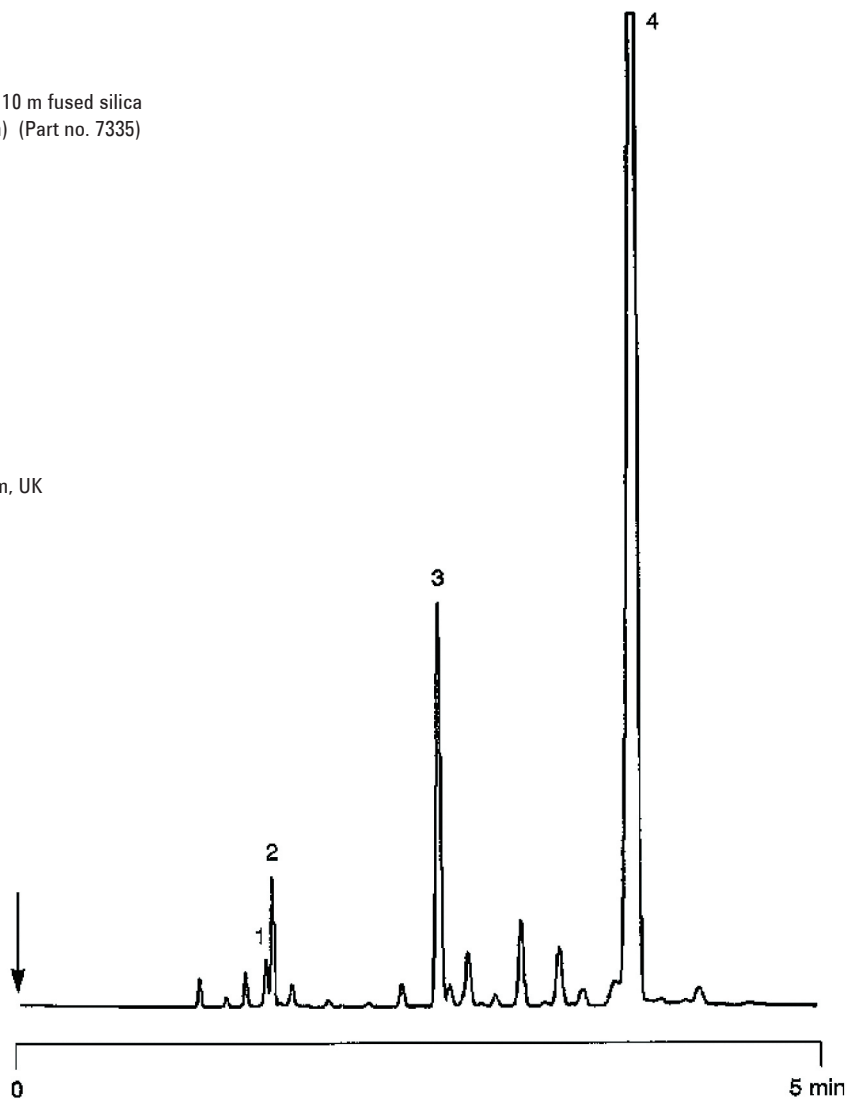
Conditions

Technique : GC-capillary
Column : Agilent CP-Wax 52 CB, 0.10 mm x 10 m fused silica
WCOT CP-Wax 52 CB (df = 0.2 µm) (Part no. 7335)
Temperature : 150 °C
Carrier Gas : He, 150 kPa (1.5 bar, 22 psi)
Injector : Split, 200 mL/min
T = 250 °C
Detector : FID
T = 285 °C
Sample Size : 1 µL
Solvent Sample : ethanol

Courtesy : M. Staniforth, Smithkline Beecham, UK

Peak identification

1. limonene
2. eucalyptol
3. menthane
4. menthol



www.agilent.com/chem

This information is subject to change without notice.

© Agilent Technologies, Inc. 2011

Printed in the USA

31 October, 2011

First published prior to 11 May, 2010

A01321



Agilent Technologies