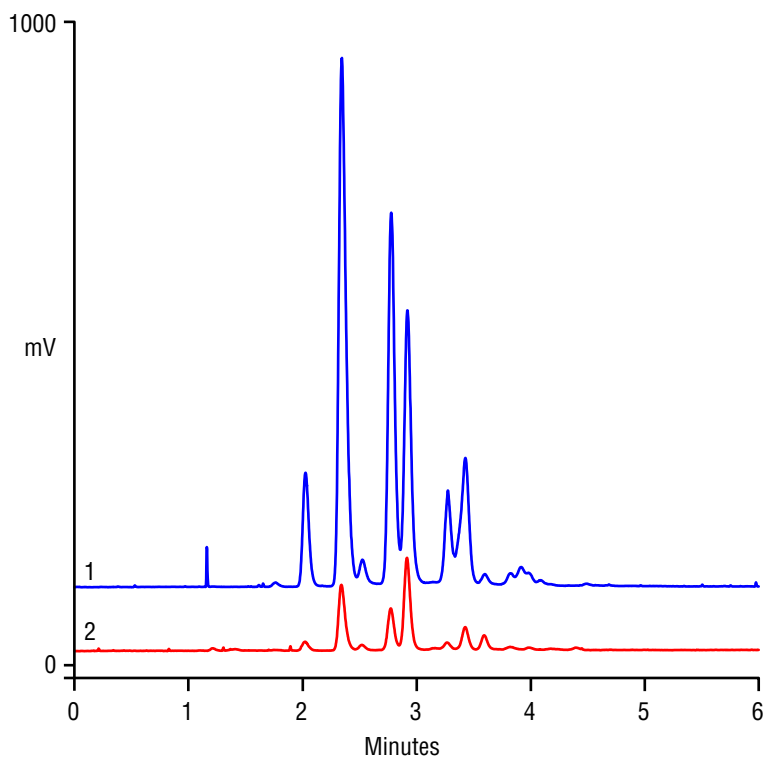


High-Resolution Triglyceride Profile of Cooking Oils on Acclaim RSLC C18 with Evaporative Light Scattering Detection



Column: Acclaim® 120 RSLC C18, 2.2 μ m
 Dimensions: 2.1 \times 100 mm
 System: UltiMate® 3000 RSLC
 Mobile Phase: A. Acetonitrile
 B. Ethyl acetate

Gradient Time:
 min -4.0 0.0 0.25 8.0 10.0
 %A 40 40 40 10 10
 %B 60 60 60 90 90

Temperature: 15 $^{\circ}$ C
 Flow Rate: 0.4 mL/min
 Column Pressure: 160 bar
 Injection: 2 μ L; valve to bypass at 0.20 min.
 Detection: ELSD, spray 45 $^{\circ}$ C, drift 65 $^{\circ}$ C,
 filter 2, gas 50 psi

Samples: A. Wheat germ oil
 B. Soy oil
 (1 mg/mL in 2-propanol)

26206

When comparing oils of similar properties, or trying to get a detailed profile of an oil, a high-resolution analysis is needed. The Acclaim 120 RSLC C18 2.2 μ m 2.1 \times 100 mm column provides excellent efficiency without a speed penalty. Selectivity is improved by using an acetonitrile/ethyl acetate gradient at sub-ambient temperature.