

Metrohm Columns and their Application



Brine, sea, and brackish water analysis made easy

Brine, sea, and brackish water put a challenge to chromatography due to their high salt fractions. Successful cation analysis in such samples requires a column with high capacity. The Metrohm C 6 is a high capacity column that helps you to meet this challenge with ease.

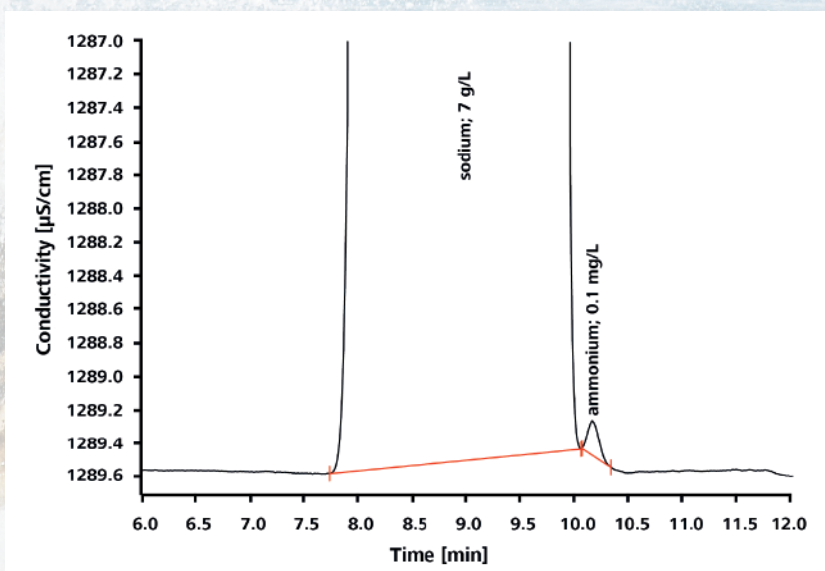


Metrosep C 6

Metrosep C 6 – exceptionally high sodium-ammonium resolution

The Metrosep C 6 column excels by its high resolution between sodium and ammonium in particular. This makes the Metrosep C 6 the ideal column for the determination of sodium and ammonium even when they are present

in highly different concentrations. Due to this property the Metrosep C 6 is also well suited for cation analysis in fertilizers or salts as well as in cooling waters of thermal power plants using ammonium as modifiers.



Ammonium determination in a sample rich in sodium (ratio 70'000:1) Metrosep C 6 - 250/4.0: 4.0 mmol/L HNO_3 , 1.0 mmol/L Dipicollic acid, column temperature 30 °C, sample volume 5 μL , flow 0.9 mL/min, conductivity detector.

The Metrosep C 6 also enables ...

- the fast analysis of drinking water using high eluent concentrations with symmetrical calcium and magnesium peaks.
- the determination of amines in cooling waters.
- the analysis of choline in milk.

Did you know? Metrohm columns ...

- are available in different lengths and with different capacities, depending on the application.
- record the number of injections and working hours of each column.
- can be used with organic modifiers such as acetone and acetonitrile.
- offer robust Swiss Quality for a long column life.
- can be used with instruments from third party manufacturers as well.

Ordering Information

6.1051.410	Metrosep C 6 - 100/4.0
6.1051.420	Metrosep C 6 - 150/4.0
6.1051.430	Metrosep C 6 - 250/4.0
6.01051.210	Metrosep C 6 - 100/2.0
6.01051.220	Metrosep C 6 - 150/2.0
6.01051.230	Metrosep C 6 - 250/2.0

www.metrohm.com

 **Metrohm**