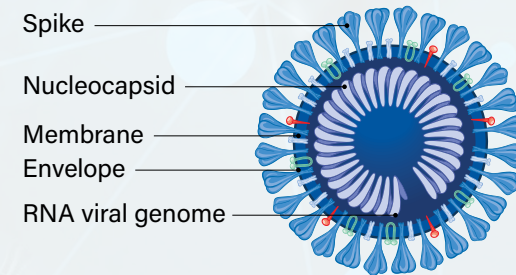


SARS-CoV-2 LC-MS Workflow Overview*

The Waters™ SARS-CoV-2 LC-MS Kit (RUO) is intended for quantitative detection of SARS-CoV-2 Nucleocapsid (NCAP) peptides. This kit is for research use only and is not intended for use in diagnostic procedures.



SAMPLE PREPARATION

Add reagent to extract and digest proteins to generate peptides

SAMPLE ENRICHMENT

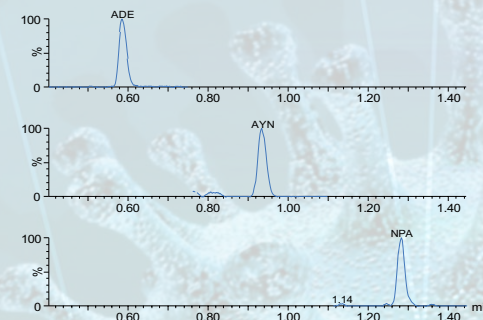
Automated sample enrichment of ADE, AYN, and NPA peptides using SISCAPA® anti-peptide antibody enrichment and Andrew+ Pipetting Robot

DETECTION

LC-MS/MS analysis of enriched samples with 2.5 minute run time

RESULTS

ADETQALPQR
AYNVTQAFGR
NPANNAIIVLQLPQGTTLPK



~4 HOURS PER PLATE WITH AUTOMATION

~4 HOURS LC-MS ANALYSIS PER PLATE

* This overview is for illustrative purposes only. Please refer to the Instructions for Use included with the SARS-CoV-2 LC-MS Kit (RUO) for detailed method steps.

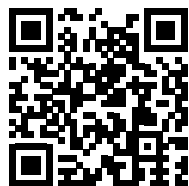
SARS-CoV-2 LC-MS Kit* (RUO) Options

*Kit designed for 96 samples

Name	SARS-CoV-2 LC-MS Starter Kit (RUO)	SARS-CoV-2 LC-MS Re-Order Kit (RUO)	SARS-CoV-2 LC-MS Sample Preparation and Reagent Kit (RUO)	SARS-CoV-2 LC-MS System Suitability Set (RUO)
Description	The starter kit includes all the components needed to prepare, detect, and accurately quantify three peptides (AYN, NPA, and ADE) from the SARS-CoV-2 NCAP protein.	The re-order kit includes components needed to prepare, detect, and quantify three peptides (AYN, NPA, and ADE) from the SARS-CoV-2 NCAP protein, excluding the analytical column and in-line filter which both last beyond 96 samples.	The sample preparation and reagent kit includes the reagents needed to extract, digest, and enrich three peptides (AYN, NPA, and ADE) from the SARS-CoV-2 NCAP protein (including calibrators and internal standard). To run an additional 96 samples while continuing to use the original column, in-line filter, and system suitability set from the starter kit.	System suitability, vials, and caps.
P/N	176004946	176004947	176004948	176004949
SARS-CoV-2 LC-MS Enrichment Set (RUO)	x	x	x	
SARS-CoV-2 LC-MS Reagent Set (RUO)	x	x	x	
SARS-CoV-2 LC-MS Calibrator and Internal Standard Set (RUO)	x	x	x	
Mobile Phase Additive (Formic Acid)	x	x		
System Suitability – 186010232	x	x		x
Vials for System Suitability	x	x		x
Caps for System Suitability	x	x		x
Column (ACQUITY™ Premier Peptide)	x			
In-Line Filter	x			

SARS-CoV-2 LC-MS Kit (RUO) Component Descriptions

Name	Description	Quantity	Storage Instructions
SARS-CoV-2 LC-MS Enrichment Set (RUO)	AYN-antibody magnetic bead conjugate, NPA-antibody magnetic bead conjugate, ADE-antibody magnetic bead conjugate (1.1 mL each)	1 vial per conjugate	2-8 °C
SARS-CoV-2 LC-MS Reagent Set (RUO)	CHAPS Wash Buffer (60 mg)	1/pk	Room temperature
	CHAPS Elution Buffer (6 mg)	1/pk	Room temperature
	Phosphate Buffered Saline Tablet	1/pk	Room temperature
	RapiGest™ for SARS-CoV-2	1/pk	Room temperature
	Ammonium Bicarbonate (791 mg)	1/pk	Room temperature
	QuanRecovery™ with MaxPeak™ 700 µL Plates, 25/pk - 186009184	2 x 25/pk	N/A
	Cap-mat 96-well, 7 mm - 186006332	1/pk	N/A
	Adhesive Plate Seal - 600001924	3/pk	N/A
SARS-CoV-2 LC-MS Calibrator and Internal Standard Set (RUO)	Trypsin	1 vial/pk	Freeze on arrival (-20°C)
	Stable Isotope Labelled (SIL) NCAP Peptide Mixture	1 vial/pk	Freeze on arrival (-20°C)
	NCAP Peptide Calibrator Stock	1 vial/ pk	Freeze on arrival (-20°C)
	Tosyl-L-lysyl-chloromethane hydrochloride (TLCK)	1 vial/pk	Freeze on arrival (-20°C)
SARS-CoV-2 LC-MS System Suitability (RUO)	NCAP Peptide Mixture - 186010232	1 vial/pk	Freeze on arrival (-20°C)
Column	ACQUITY Premier Peptide BEH 300Å C ₁₈ 1.7 µm, 2.1 x 30 mm Column - 186010094	1/pk	Room temperature
Mobile Phase Additive	Formic Acid - 186006691	2 vials/pk	Room temperature
Vials for System Suitability	QuanRecovery with MaxPeak HPS 12 x 32 Screw Neck Vial, 300 µL (1 x 100/pk) - 186009186	1 x 100 vials/pk	N/A
Caps for System Suitability	Black Cap and Preslit PTFE/Silicone Septum for TruView Vials (1 x 100/pk) - 186005827	1 x 100 caps/pk	N/A
In-Line Filter	Kit, ACQUITY Column In-Line Filter - 205000343	1/pk	Room temperature



waters.com/SARSCoV2Kit