

Automate Your LC-MS Data Analysis Routines

Build the informatics YOU need for YOUR laboratory

Symphony™ Software is a client/server application that is triggered by a MassLynx® acquisition and allows the automation of one, or several, data handling or processing functions in a sequence.

It is built with efficiency, flexibility and creativity in mind and enables laboratories to extract the maximum value from LC-MS instrumentation.

Symphony software brings numerous benefits:

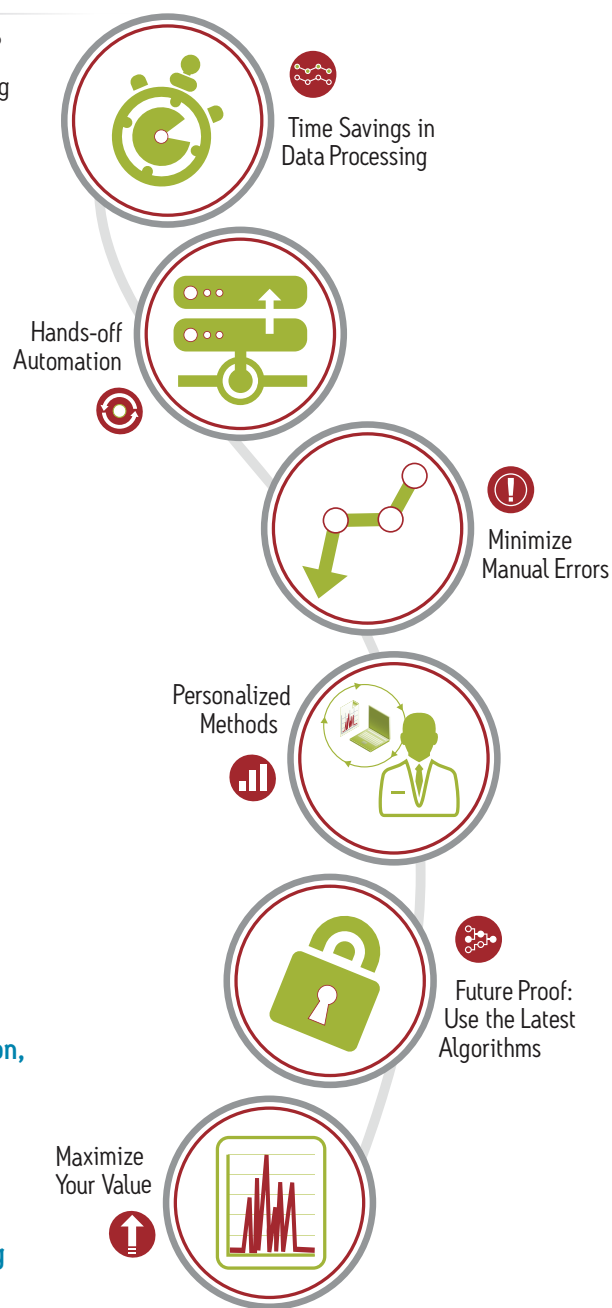
- Significant time savings in experimental workflows
- Initiate data processing as soon as an instrument run has completed and run to completion without additional user intervention
- Minimization of typical user errors when processing large datasets with manual methods
- Personalized data processing provides only the optimal functions and algorithms required for your laboratory
- Future-proof your data processing pipelines with the ability to respond to algorithm advances
- Discover new ways to process your LC-MS data to extract maximum value

“By automating routine data-processing steps, Symphony saves our operator time, and allows us to conduct the most time-consuming parts of the informatics workflow in parallel to acquisition. Best case, it can save MONTHS of processing time, and in combination with noise-reduction, petabytes of storage.

We see great value in the modular nature of Symphony, allowing us to rapidly develop and test new processes for handling experimental data, including real-time QC, prospective fault detection and tools for ensuring data integrity.”

JAKE TM PEARCE

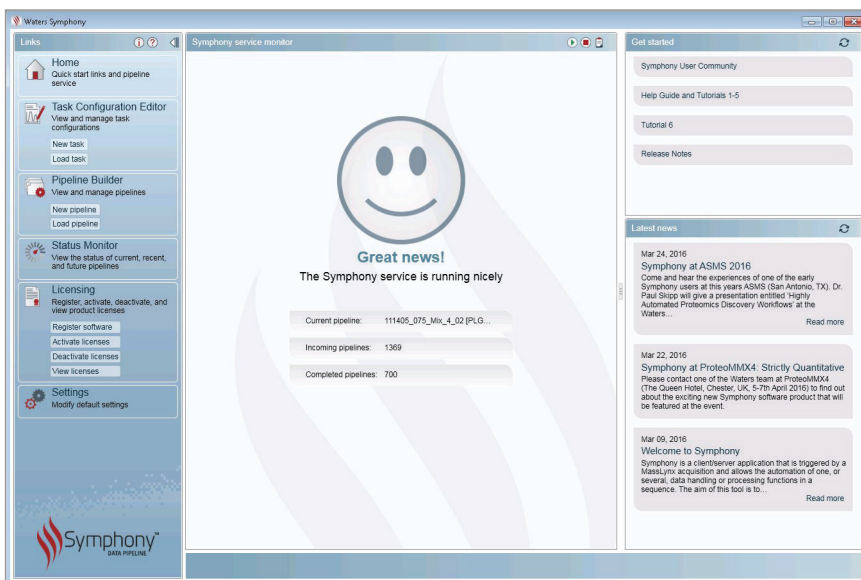
**Informatics Manager, MRC-NIHR National Phenome Centre,
Imperial College, London, UK**



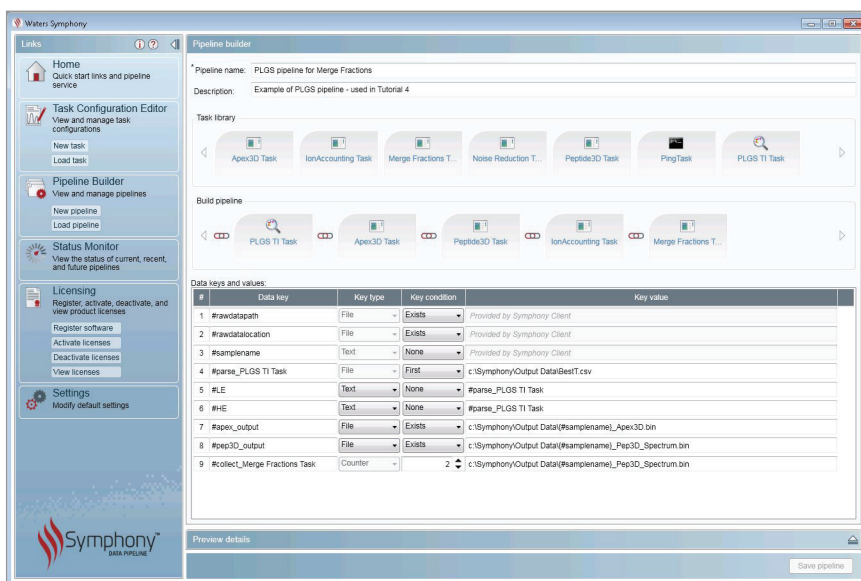
Key features

- Accepts a wide range of executables, batches and scripts
- V1.0 initiated from MassLynx
- Drag and drop tasks to easily build pipelines
- Conditional tasks to allow the use of data from one task to another
- Pipeline library for ease of use and to share with other users
- Work across multiple PCs and across networks
- Recover processing queue's following network or other processing interruptions
- Extensive log reporting to aid troubleshooting
- Built-in news feed featuring the latest product information and updates from the Symphony Online Community

To find out more go to www.waters.com/symphony, or join the Symphony Online Community at <http://forums.waters.com/groups/symphony>



The Symphony home page displays the current job status, provides helpful links to user guides and tutorials, and has a live news feed for the latest Symphony information.



In the Pipeline Builder, data processing pipelines can be easily constructed from a wide variety of tasks using a simple drag and drop.

Waters

THE SCIENCE OF WHAT'S POSSIBLE.®

Waters, The Science of What's Possible, and MassLynx are registered trademarks of Waters Corporation. Symphony is a trademark of Waters Corporation. All other trademarks are the property of their respective owners.

Waters Corporation
 34 Maple Street
 Milford, MA 01757 U.S.A.
 T: 1 508 478 2000
 F: 1 508 872 1990
www.waters.com