

Empower Laboratory Analytics

Key chromatography performance dashboards to help maximize your laboratory resources.

BUILT-IN ANALYTICS FOR EVALUATING LABORATORY PERFORMANCE

Waters® Empower® Chromatography Data Software has helped numerous laboratory-dependent organizations streamline processes with advanced data collection and reporting capabilities.

Now, that software also assembles and displays critical chromatography performance metrics in easy-to-view, analytics dashboards so that you can focus on what's most important - the interpretation of key information, not its collection.

IMPROVE YOUR DECISION MAKING

Empower Laboratory Analytics* dashboards let you quickly and accurately determine how laboratory resources are being used, without significant manual effort.

You will be able to make evidence-based decisions on which improvements are needed to increase laboratory efficiency.

**Only available with Empower 3 Software, Feature Release 2.*

EMPOWER LABORATORY ANALYTICS LETS YOU

- Access critical system usage information
- Maximize system utilization
- Manage resources
- Identify training needs
- Identify process improvements
- Plan for capital expenditures
- Identify opportunities to improve sample turnover time using UPLC® technology



EMPOWER LABORATORY ANALYTIC FEATURES

Easy-to-read visualizations	Empower Laboratory Analytics is comprised of prebuilt analysis modules that convert large volumes of complex data into easy-to-read visualizations including: bar charts, line graphs, and pie charts.
Automatic data collection	By automatically consolidating the data you need in an easy-to-view format, Empower Laboratory Analytics helps reduce the time and cost associated with monitoring and evaluating your chromatography systems
Easy-to-use interface	The intuitive interface makes it fast and easy to extract information, providing a multi-dimensional analysis, as well as rank and sort functionality so you can analyze complex data sets to fully understand what's happening behind the graphs.
Flexible timeframes	Empower Laboratory Analytics launches from the Configuration Manager Tools Menu. You have the flexibility to run a scan immediately or to schedule a scan to provide information whenever you need it. Using date ranges, you can filter scan results to target the time frame of interest.
Compatible report formats	Empower Software stores the scanned information until it performs the next scan. You can save analytic dashboards as PDF files for convenient storage or you can export the information to a Microsoft Excel or Word file.
Scalable	Empower Laboratory Analytics is scalable and can run on Empower workstations, workgroups, or on enterprise-level systems to meet your needs.

LABORATORY ANALYTIC DASHBOARDS

Empower Laboratory Analytics offers five prebuilt dashboard types:

- System summary
- System usage
- Project usage analysis
- User analysis (optional)
- Methods analysis

System Summary – Message Center Overview Dashboard

Identify potential problem areas by analyzing the types of errors and frequency of these error messages in your Empower Software system. The Message Center Overview pie graph shows you how many messages are errors, warnings and informational.

The cause of errors can be further classified by system, user, and application.

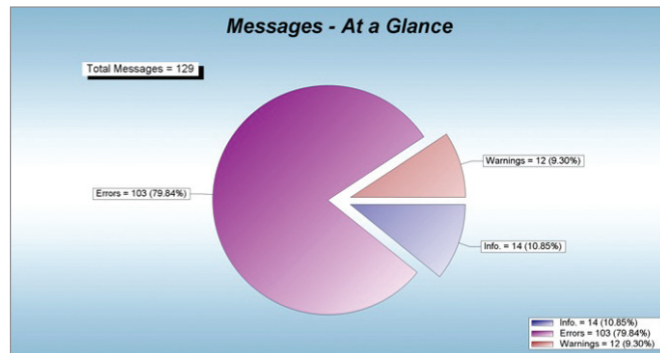


Figure 1. System Summary - Message Center Overview Dashboard

System Summary – Analytics Dashboard

This dashboard provides an overview of the system and its users. Here you will see:

- The number of chromatographic systems: online and off-line
- The number of Empower servers: Raw data, Citrix, clients, or LAC/E™ 32
- The number of projects: normal, locked, process only, read only, validation template, validation working, and total number.
- User status information includes the number of active, disabled, and removed users, as well as the number of user groups.

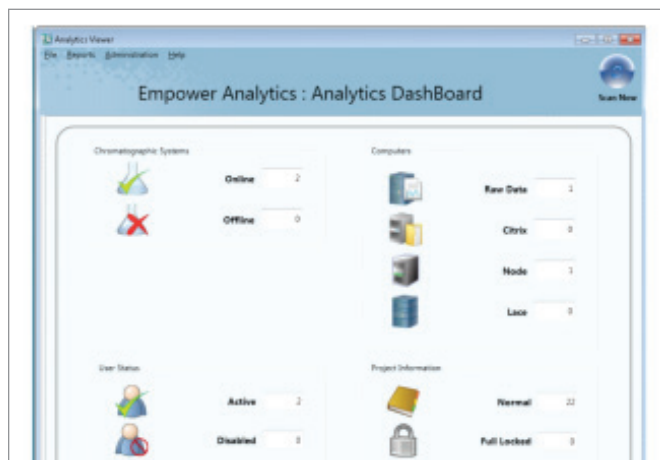


Figure 2. System Summary- Analytics Dashboard

System Usage – Analysis Dashboards

These bar graph dashboards make it easy to compare system usage using the following criteria:

- Total number of:
 - Injections by system
 - Injections by system by month
 - Sample sets by system
 - Sample sets by system by month
- Actual percent usage per system by month
- Top systems usage by month

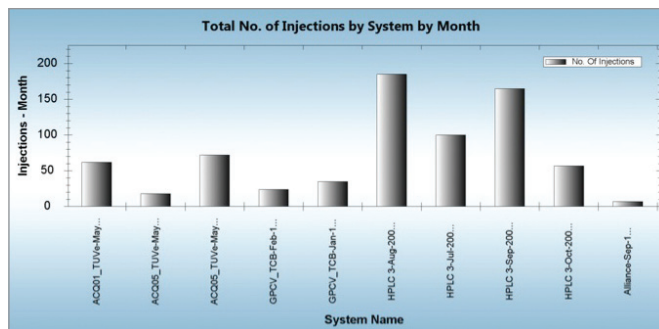


Figure 3. System Usage Analysis - Total Number of Injections by System by Month Dashboard

Project Usage Analysis Dashboards

Determine which projects make the most demands on your resources by comparing the total number of:

- Injections by project
- Results by project
- Results by project by month
- Sample sets by project
- Sample sets by project by month

Method Analysis - UPLC Potential Dashboard

Analyzes your top five projects and illustrates the potential time savings if the projects were transferred to UPLC Systems. Additionally, this dashboard analyzes your top five HPLC systems which could be beneficially replaced by UPLC systems.

User Analysis Dashboards (Optional)

Available depending on company needs, these dashboards can help identify individual training needs or assist with decisions on laboratory personnel workload. Empower Laboratory Analytics displays dashboard information in bar graphs to compare the total number of:

- Injections by user
- Results by user
- Results by user by month
- Sample sets by user
- Sample sets by user by month

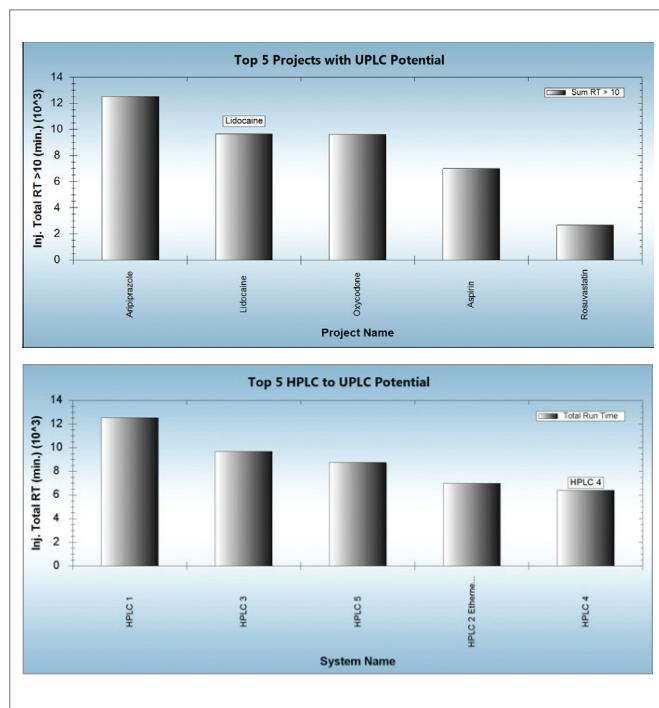


Figure 4. Method Analysis - Top Five Projects with UPLC Potential and Top Five HPLC Systems with UPLC Potential

Methods Analysis Dashboards

Identify areas of compliance risk by comparing:

- The amount of manual integration that occurs per project and per user
- The amount of reprocessing that occurs per project and per user

WATERS LABORATORY INFORMATICS SOFTWARE

Converting scientific data into useful information

Waters Laboratory Informatics Software provides a powerful suite of solutions for instrument control, scientific data management, scientific search, network integration, and compliance management to streamline analytical laboratory operations.

Our Informatics solutions have helped leading pharmaceutical, environmental, food & beverage, and chemical materials organizations reduce costs, accelerate decision making, improve laboratory effectiveness, and get products to market faster.

For more information about Waters Informatics Software contact your local Waters sales or service representative or go to www.water.com/informatics.

WATERS LABORATORY ANALYTICS SOLUTIONS

Improving laboratory operations

Waters offers a range of laboratory analytics tools and services for Empower Software users that help maximize laboratory resources for increased productivity and cost savings:

- **Empower Laboratory Analytics** – Provides prebuilt, administration, resource utilization, and method robustness dashboards.
- **Empower Driven Services Resource Management Report** – Offers customized, comprehensive resource utilization, laboratory workflow optimization, administration, compliance, custom fields, and service reports based on your specific goals and objectives as well as detailed analysis and recommendations by expert Waters consultants.
- **Empower Driven Services 365** – Supplements the Resource Management Report by providing customized, resource utilization and administration dashboards electronically for daily monitoring of performance data.

For more information about Empower Laboratory Analytics and other Waters Laboratory Analytics tools and services, contact your local Waters sales or service representative or go to www.water.com/analytics.

ADVANCE YOUR BUSINESS WITH WATERS LABORATORY ANALYTICS

- Uncover new areas of cost savings
- Maximize the efficiency of existing assets
- Optimize workflow processes
- Justify new technology adoption
- Integrate with Lean Six Sigma initiatives

Waters

THE SCIENCE OF WHAT'S POSSIBLE.™

Waters, Empower, and UPLC are registered trademarks of Waters Corporation in the U.S.; additional registrations pending. LAC/E and The Science of What's Possible are the trademarks of Waters Corporation. All other trademarks are the property of their respective owners.

©2013 Waters Corporation. Printed in the U.S.A.
March 2013 720004596EN KP-XX



Waters Corporation
34 Maple Street
Milford, MA 01757 U.S.A.
T: 1 508 478 2000
F: 1 508 872 1990
www.waters.com