

Using Volcano Plots to Compare Vinyl Acetate Resin Samples Measured by Pyrolysis GC-MS

Product: Mass Spectrometer

[General]

Advances in mass spectrometry are enabling analysis of micro samples and unknown components that were not observable before. As the volume of information acquired from mass spectrometry increases, researchers are calling for simple techniques to analyze the numerous components observed, and as a result, there is a rise in demand for comprehensive analytical techniques including multiple classification analysis.

In this work, we analyzed 2 samples in a high resolution GC-TOFMS, using EI, the most widely used ionization technique for GC-MS, and compared the data acquired by using a comprehensive analytical technique.

[Method]

As model samples, 6 commercial vinyl acetate resins (adhesives) were used (sample A ~ F). A gas chromatography time-of-flight mass spectrometer (GC-TOFMS) was used for the measurements. Since emulsion samples including adhesives are difficult to analyze without preliminary treatment, the samples were subjected to pyrolysis. Also, a column shorter than a typical GC column was used along with a Fast GC temperature sequence to speed up the measurement process. The acquired data was examined using SpectralWorks Analyzer Pro, and 2 samples were compared by the Volcano Plot. Table 1 shows the pyrolysis fast GC/TOFMS measurement conditions.

[Results]

In MS Tips 243, same 6 vinyl acetate resin samples (A~F) were examined using PCA. Out of these, samples C and F, which had relatively similar TIC patterns, and samples A and C, which were not clearly separated by PCA (see Figure 3), were compared using the Volcano Plot. The Volcano Plot makes it possible to express individual components that constitute the differences between 2 samples, including reproducibility. Features of the Volcano Plot are as follows.

[Volcano Plot]

- ❑ The X axis represents the logarithm of the intensity ratio between the samples, while the Y axis represents the negative logarithm of the p value in variance analysis.
- ❑ Data points correspond to individual components.
- ❑ Points having larger values in the Y axis are identified as components having higher reproducibility and points having larger absolute values in the X axis as components having larger intensity ratios between the samples.
- ❑ In Figures 1 and 2, points that exceed 5% ($p=0.05$), a level generally considered significant, are shown in green.
- ❑ Squares (□) arranged in line on both sides of the figures represent the components observed only in respective samples.

Figure 1 shows TIC chromatograms and Volcano Plot results for samples C and F. While samples C and F share many components, sample F contains these shared components in larger quantities. The data shows that samples C and F, though made of similar ingredients, contain other components including additives in different quantities. Figure 2 shows TIC chromatograms and Volcano Plot results of samples A and C. Samples A and C have fewer shared components, featuring many components unique to each.

The Volcano Plot, using the results of variance analysis, made it possible to examine in detail the differences between the 2 samples. The characteristic components distinguishing the 2 samples were instantly identified by the intensity ratio (X) and reproducibility (Y). This demonstrates that the Volcano Plot is an effective tool for comparing 2 samples and extracting their characteristic components.

Table 1. Measurement Conditions

[Py-GC-TOFMS Conditions]

System	JMS-T200GC (JEOL)
Pyrolysis temp.	600°C
Ionization mode	EI+: 70 eV, 300 μA
GC column	DB-5msUI, 15 m x 0.25 mm, 0.25 μm
Oven temp.	50°C (1 min)→30°C /min →330°C (1.7 min)
Inlet temperature	300 °C
Inlet mode	Split 100:1
He flow	1.0 mL/min (Constant Flow)
m/z range	m/z 35-650
Spectrum recording speed	0.1 sec/spectrum
Software	AnalyzerPro (SpectralWork)



GC-TOFMS: JMS-T200GC

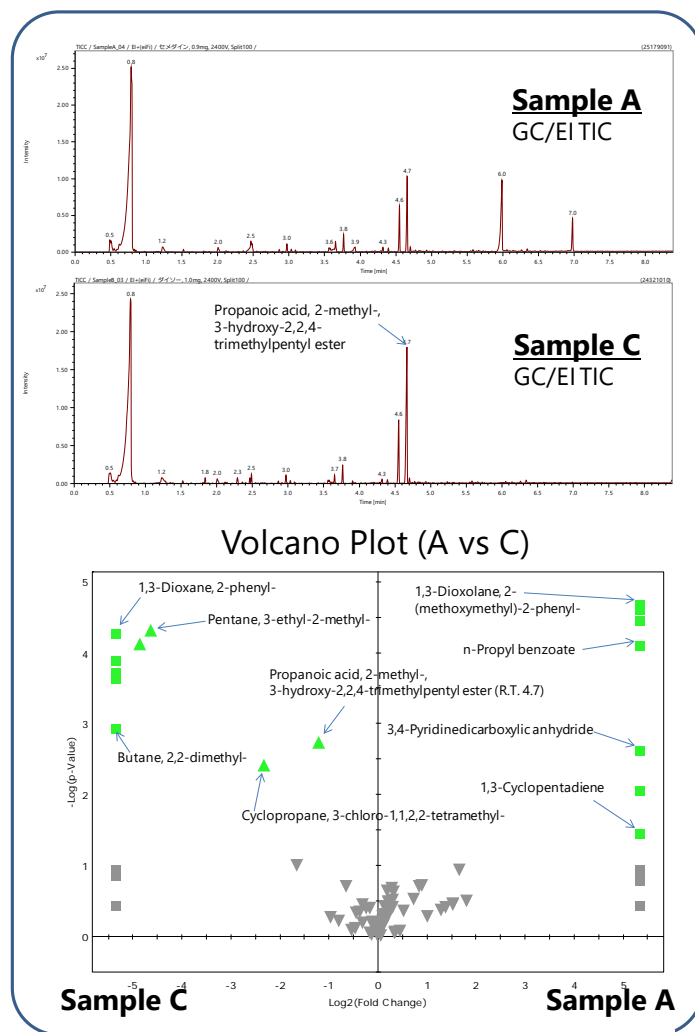
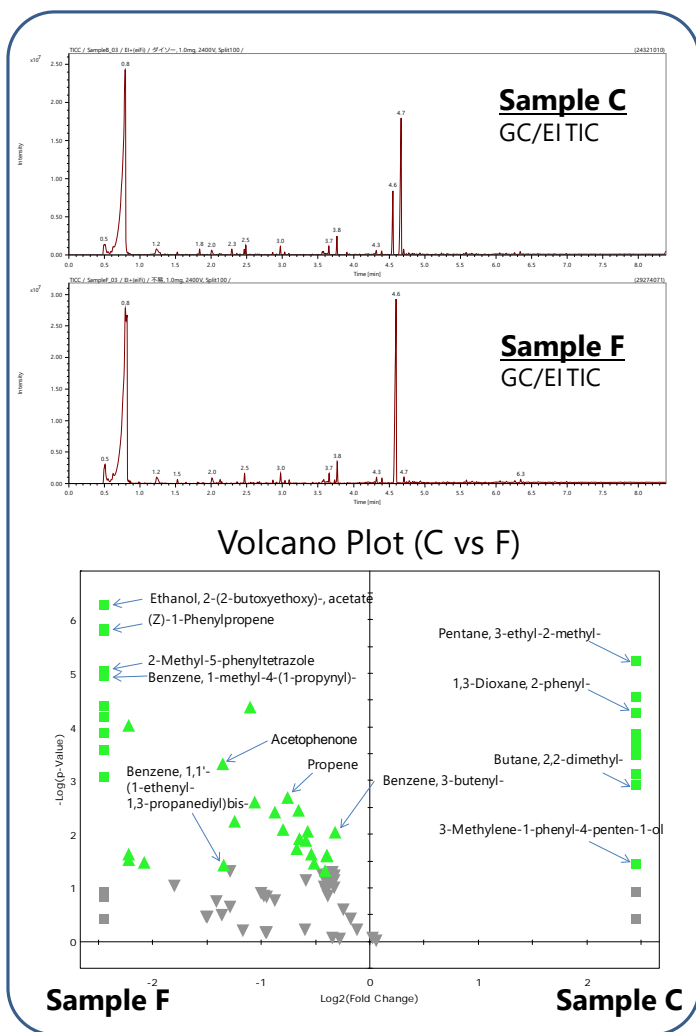


Figure 1. TIC chromatograms and Volcano Plot results of samples C and F

Figure 2. TIC chromatograms and Volcano Plot results of samples A and C

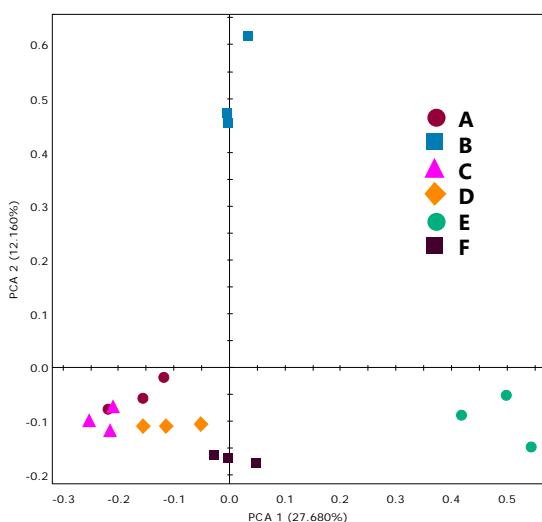


Figure 3. PCA scores of polyvinyl acetate samples

Copyright © 2018 JEOL Ltd.

Certain products in this brochure are controlled under the "Foreign Exchange and Foreign Trade Law" of Japan in compliance with international security export control. JEOL Ltd. must provide the Japanese Government with "End-user's Statement of Assurance" and "End-use Certificate" in order to obtain the export license needed for export from Japan. If the product to be exported is in this category, the end user will be asked to fill in these certificate forms.



JEOL Ltd.

3-1-2 Musashino Akishima Tokyo 196-8558 Japan Sales Division Tel. +81-3-6262-3560 Fax. +81-3-6262-3577
www.jeol.com ISO 9001 • ISO 14001 Certified

• AUSTRALIA & NEW ZEALAND /JEOL(AUSTRALASIA) Pty.Ltd. Suite 1, L2 18 Aquatic Drive - Frenchs Forest NSW 2086 Australia • BELGIUM /JEOL (EUROPE) B.V. Planet II, Gebouw B Leuvensesteenweg 542, B-1830 Zaventem Belgium • BRAZIL /JEOL Brasil Instrumentos Cientificos Ltda. Av. Jabaquara, 2958 5º andar conjunto 52, 04046-500 Sao Paulo, SP Brazil • CANADA /JEOL CANADA, INC. 3275 1ere Rue, Local #8 St-Hubert, QC J3Y-8Y6, Canada • CHINA /JEOL(BEIJING) CO., LTD. Zhongkeziyuan Building South Tower 2F, Zhongguancun Nanshanjie Street No. 6, Haidian District, Beijing, P.R.China • EGYPT /JEOL SERVICE BUREAU 3rd Fl. Nile Center Bldg., Nawal Street, Dokki, (Cairo), Egypt • FRANCE /JEOL (EUROPE) SAS Espace Claude Monet, 1 Allée de Giverny 78290, Croissy-sur-Seine, France • GERMANY /JEOL (GERMANY) GmbH Gute Aenger 30 85356 Freising, Germany • GREAT BRITAIN & IRELAND /JEOL (U.K.) LTD. JEOL House, Silver Court, Watchmead, Welwyn Garden City, Herts AL7 1LT, U.K. • ITALY /JEOL (ITALIA) S.p.A. Palazzo Pacinotti - Milano 3 City, Via Ludovico il Moro, 6/A 20080 Basiglio(MI) Italy • KOREA /JEOL KOREA LTD. Dongwoo Bldg. 7F, 1443, Yangjae Daero, Gangdong-Gu, Seoul, 05355, Korea • MALAYSIA /JEOL(MALAYSIA) SDN.BHD. 508, Block A, Level 5, Kelana Business Center, 97, Jalan SS 7/2, Kelana Jaya, 47301 Petaling Jaya, Selangor, Malaysia • MEXICO /JEOL DE MEXICO S.A. DE C.V. Arkansas 11 Piso 2 Colonia Napoles Delegacion Benito Juarez, C.P. 03810 Mexico D.F., Mexico • RUSSIA /JEOL (RUS) LLC. Krasnoproletarskaya Street, 16, Bld. 2, 127473, Moscow, Russian Federation • SCANDINAVIA /SWEDEN JEOL (Nordic) AB Hammarbacken 6A, Box 716, 191 27 Sollentuna Sweden • SINGAPORE /JEOL ASIA PTE.LTD. 2 Corporation Road #01-12 Corporation Place Singapore 618494 • TAIWAN /JIE DONG CO., LTD. 7F, 112, Chung Hsiao East Road, Section 1, Taipei, Taiwan 10023 (R.O.C.) • THE NETHERLANDS /JEOL (EUROPE) B.V. Lireweg 4, NL-2153 PH Nieuw-Vennep, The Netherlands • USA /JEOL USA, INC. 11 Dearborn Road, Peabody, MA 01960, U.S.A.