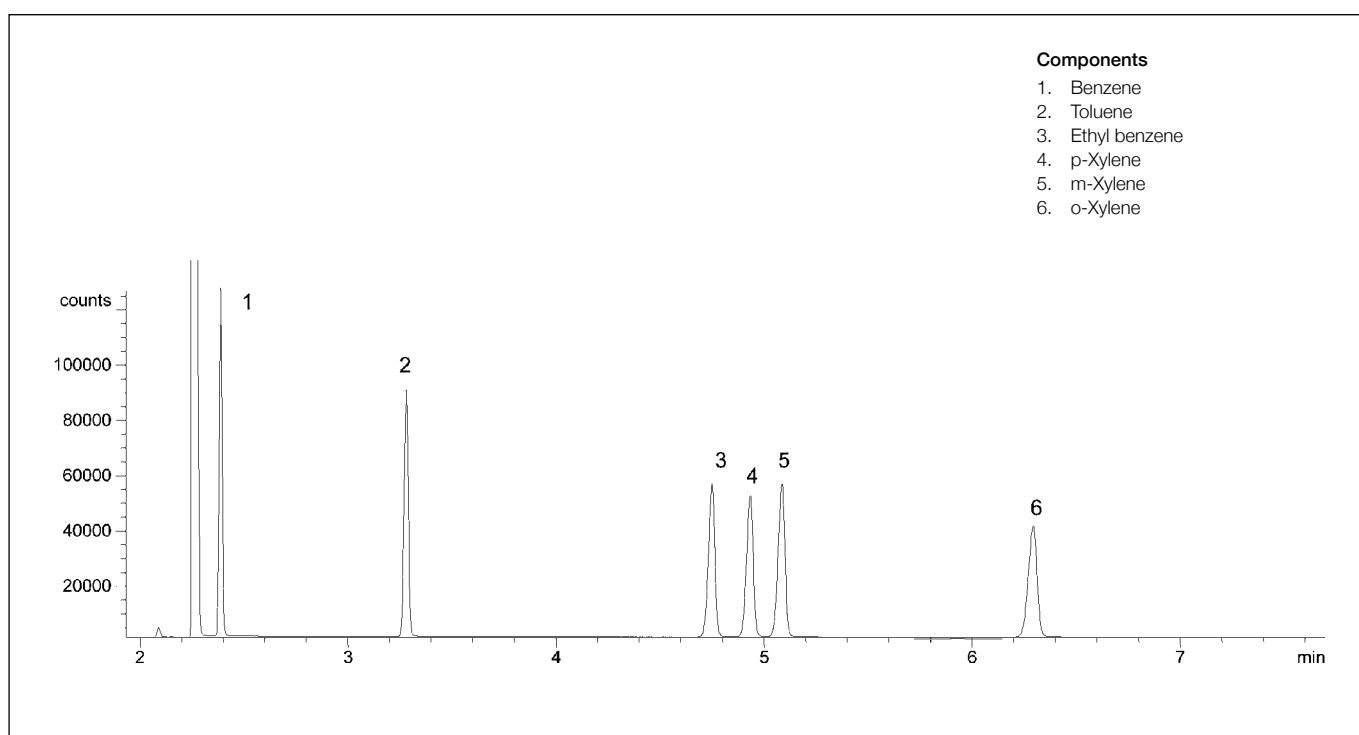


## Analysis of BTEX

SolGel-WAX™

Column part number	054796		
Phase	SolGel-WAX™	Constant flow	On
Column	30 m x 0.25 mm x 0.25 µm	Average linear velocity	35 cm/sec, 60°C
Sample	BTEX (300 ppm in methanol)	Injection mode	Split 100:1
Initial temperature	60°C, 10 min	Injection volume	0.2 µL
Detector	FID	Injection temperature	250°C
Carrier gas	He, 17.3 psi	Liner type	4 mm ID Double Taper
Carrier gas flow	1.5 mL/min		



For more information visit [www.trajanscimed.com](http://www.trajanscimed.com) or contact [techsupport@trajanscimed.com](mailto:techsupport@trajanscimed.com)